



Moravia  
YACHTING



## Beyond Capricorn

Builder	Bering Yachts
Year/Refit	2017/2018
LOA	23.95m (78' 6")
Beam	7.85m (25' 8")
Draft	2.45m (8' 3")
GT	259
Cabins	5
Guests	11
Speed	12/9 kts
Price	€4,450,000 Ex. VAT



A Hill Robinson Company





Main Salon



Main Salon



Main Salon



Main Salon



Master Cabin



Master Cabin



Master Cabin En Suite



Queen Cabin



Bridge Deck VIP Cabin



Bridge Deck VIP Cabin



Double Cabin



Double Cabin Bathroom



Twin Cabin



Twin Cabin Bathroom



Hallway



Hallway



Crew Mess & Storage Room



Wheelhouse



Sun Deck



Main Deck Aft



Main Deck Aft



Sun Deck



Fore Deck



Tenders



Tenders







## DIMENSIONS

Length	23.95m (78' 6")
Beam	7.85m (25' 8")
Draft	2.45m (8' 3")

## GENERAL

Year	2017/2018
Builder	Bering Yachts
Naval Architect	Sabdes Yacht Design
Exterior Design	Sabdes Yacht Design
Hull Construction	Steel
Superstructure	Fibreglass

## ACCOMMODATION

Number of Cabins	5 (1 Master, 4 Double)
Total Guests	11
Total Crew	4

## CERTIFICATIONS

Flag	Australia
Port of Registry	Melbourne

## TECHNICAL INFORMATION

Main Engines	2 x Cummins 350hp: 700hp
Gross Tonnage	259
Maximum Speed	12 knots
Cruising Speed	9 knots
Fuel Capacity	44,000 litres
Water Capacity	3,170 litres
Range	6,000 nm
Stabilisers	Zero Speed

## TENDERS AND TOYS

- 1 x Walker Bay 525 with Yamaha 115hp
- 1 x Swift 400EXP with Yamaha 50hp

## AMENITIES

- Jacuzzi
- Bathing Platform
- Bar
- Barbeque
- WiFi
- Air Conditioning

## PRICE

€4,450,000 Ex. VAT

## CONSTRUCTION

Hull material	Steel
Superstructure material	Steel
Decks	Lower deck (internal), Main deck, Upper (bridge) deck, Sun deck

## GENERAL

Model or type	Bering 80
Builder	Bering Yachts
Naval Architect	Sabdes Yacht Design
Year of delivery	2017
LOA	23.95m
LWL	22.6m
Beam	7.85m
Draft	2.45m
Displacement	235,000 kg (at full load)
Classification & status	Built to RINA specs

## MAIN CHARACTERISTICS

Fuel capacity	47,000 litres
Water capacity	3,170 litres
Black water tanks	1,780 litres
Grey water tanks	1,780 litres

### Speed and Range under power

Maximum speed	10.5 kts - rpm: 1750
Cruising speed	8.8 kts - rpm: 1300
Economical speed	8.1 - rpm: 1200

Consumption at maximum speed	127 l/h
Consumption at cruising speed	51 l/h
Consumption at economical speed	40 l/h
Range at cruising speed	6,441 nm
Range at economical speed	8,726 nm

## MACHINERY

No. Engines	2
Manufacturer	Cummins
Hp or kW each	350hp
Model	QSM11
Total port engine hours	1,526 - date: 19/04/2023
Total stb. engine hours	1,526 - date: 19/04/2023
Gearboxes	2 x ZF W350-1 with 3.95: 1 reduction
Propellers	2 x ZF 5-Blade 52/52" NiBrAl Fixed Pitch Screw

## GENERATORS & ELECTRICITY

Generators	2+1 Onan - kw: 2x40kW + 1x13.5kW
	hours: Port 3,376
	Starboard 3,376
	Date: 19/04/2023

### Electricity

Voltage	230/400V cycles: 50hz
Shore power	100A (220/380 Vac) + 50A 220V

Service Battery power	Vision 4D 240A and Vision 4D 120 Amp AGM. 12VDC total capacity: 4,800 Amp Hours
Battery Charger	3 x Victron MultiPlus 5kW + 1 x Victron Skylla-I 24/100

## Other Machinery

Air conditioning	Cruisair system, total capacity 234,000BTU with reverse cycle heating
Water heating	2 x Torrid 40 gallon marine water heaters
Stabilisers	Imtra SPS90 with 2 x 2.0m <sup>2</sup> fins
Bowthruster	Sidepower MTR-550Kg bow and stern
Watermaker	2 x Sea Xchange 30V SX2200Z l/hr: 2 x 250
Fuel cleaning system	Alfa-Laval & Reverso systems

## ACCOMMODATION

No. of guest cabins	5
Arrangement	1 x Double Master Cabin 2 x Double VIP Cabin 1 x Twin Cabin 1 x Single cabin (with office)
No. of crew cabins	2 (2 twin cabins each with en suite head)

## GALLEY & LAUNDRY EQUIPMENT

### Galley

- Ceramic granite planked tile flooring
- Granite counter top
- 900mm induction 4-ring hob
- Broan trash compactor 15SS
- Full size dishwasher
- 2 x Pyroletic Wall Ovens
- Media microwave
- Isotherm Marine 190 double drawer refrigerator
- Isotherm Marine Ice maker (40 lbs per day)
- 2 full height Samsung refrigerators
- Standup freezer

### Laundry Equipment

- LG combo washer/dryer (in crew mess)
- Siemens Washing machine
- Siemens Condenser dryer

## COMMUNICATION, NAVIGATION & ENTERTAINMENT EQUIPMENT

### Navigation and Communication Equipment

- Furuno sonar CH300BBL/325
- WASSP WMB-3230 ( 160kHz - 2<200m range capability ) with Furuno WMB-T160S/20-TRANSDUCER 160KHZ W/20M.
- 2 x Furuno Radar Model DRS25A (PSUI3,Gear Box,15M signal Cable)
- 2 x Furuno XNI3A/6 Antenna, 6 Foot Open Array
- 3 x Furuno black box TZTBB System

- 4 x Hatterland HD Monitor P# 24T21 MMD
- 2 x Hatterland 19" Display
- 2 x Furuno DFF1 BB Depth Finder network sounder
- 2 x Furuno Transducer 556TID-LTD/12
- Furuno Model SC-30 Satellite Compass
- Furuno IF-NMEASC NMEA converter for SC30
- Furuno GP330B GPS Receiver
- 4 x Furuno FI70 Data Organizer
- Furuno 200WX Weather Station Instrument
- Furuno FA 50 AIS Class B Transponder
- Furuno Navpilot 7IIC control Unit
- Furuno Processor, Rudder Reference
- Furuno PG 700 Integrated Heading Sensor
- Furuno Pump PUMPHRP05-24
- Furuno IF-NMEA2K2 Converter, CAN bus/NMEA2000
- Furuno MS-100 motion sensor
- 2 x Furuno FI-5002 Junction Box
- 3 x Furuno PSU-013 24VDC power supply unit for TZTBB
- 2 x Furuno HUB-101 Ethernet Hub
- KVH TracPhone V11-IP Dual-mode C/Ku-band Antenna - No Labels, ACU and Modem
- Iridium Extreme 9575 Satellite Phone Standard Package
- Iridium 9575 Satellite Phone Marine Standard Package
- Red port Optimizer Satellite Router Wxa-112
- Digital Cellular Buster 4 KSBR-50M
- 2 x Icom VHF radio M506 AIS Rear (Rear Mic)
- 4 x Icom-Hand held VHF radio IC-M88 compact radio
- ACR-2842 Class A EPIRB GlobalFix Pro 406 CAT I w integral GPS
- ACR SART-2714NH PatFinder3 Transponder w Bracket
- Shakespeare AURA 2G-3G Wireless Adjustable Cellular Booster Kit

- Hard State 24V Computer for Nobel Tec Time Zero
- Glendinning Handheld Remote Helm Station Bow & Stern

### Entertainment Equipment

- Main Salon: 55" Samsung screen
- Upper deck cabin: 42" flat screen
- Starboard guest cabin: 32" screen
- Fusion audio system

## TENDERS & TOYS

- Walker Bay 525 with Yamaha 115hp (LOA 5.25)
- Swift 400EXP with Yamaha 50hp (LOA 4m)

## DECK EQUIPMENT

- Anchors: 2 x N-type 180kg each
- 2 x 122m of 16mm zinc coated anchor chain
- 2 x Maxwell VWCC4500 hydraulic winches
- 2 x Muir V3500 electric rope capstans

## SAFETY & SECURITY EQUIPMENT

- 2 Fireboy FR-8000 safety alarm monitors in pilothouse
- Fireboy AP65-FESD-02-TB-R smoke detectors in every room
- Fireboy CMD-4MR combination caron monoxide detectors in each room on lower deck
- 2 x Fireboy Xintex automatic deployment fire suppression canisters in the engine room and lazarette
- 2 x OceanMaster 50-R/R-16M-A 16 person SOLAS life rafts
- Fire extinguishers in every room

## SAFETY & SECURITY EQUIPMENT cont...

---

- 12 x Johnson 4,000 gallon/hour 24V submersible bilge pumps
- Each bilge has an Ultra SR UPS-01 automatic high water alarm bilge pump switch installed
- Desmi S80-70-275N/D02 electric self-priming centrifugal emergency bilge/fire pump. "S" motor with 3 phase 50 Hz, M1-4 4,8kW

## ADDITIONAL COMMENTS

---

- Loose furniture
- Various chairs, sun loungers etc.

## EXCLUSIONS

---

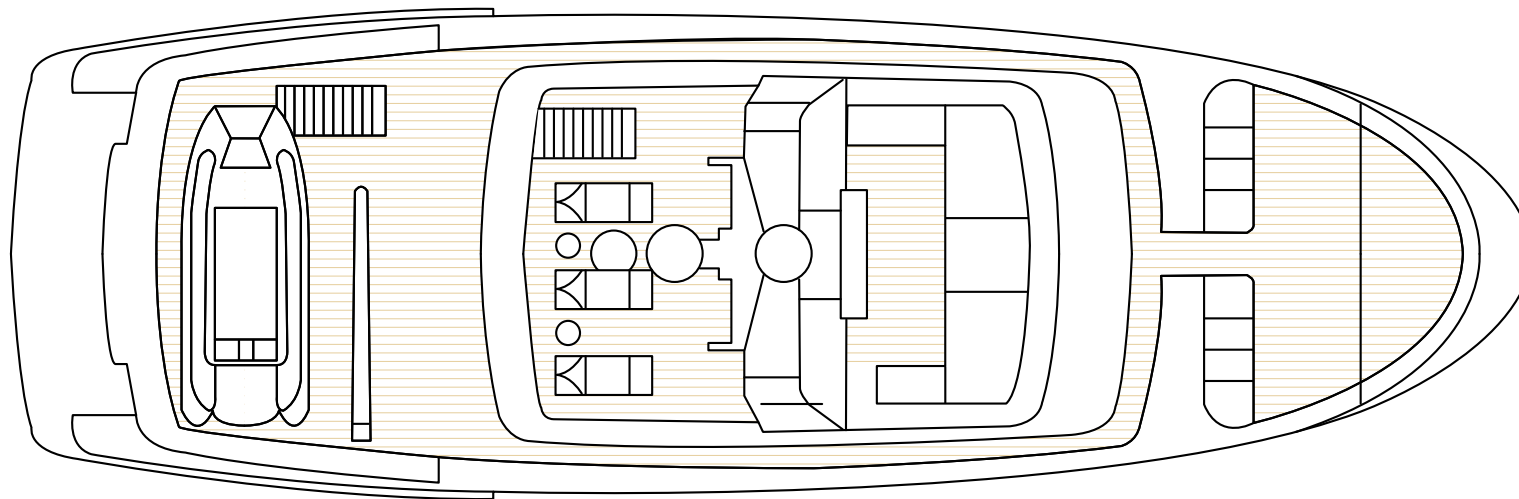
- Upon request

## REFITS

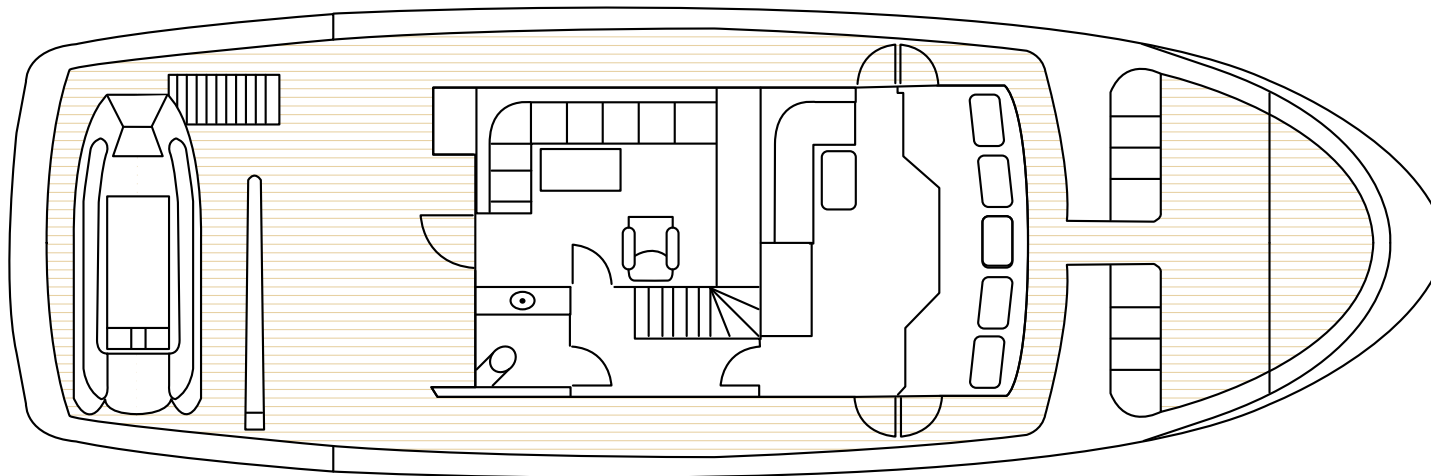
---

- All necessary planned and preventative maintenance works completed each winter with generous budget

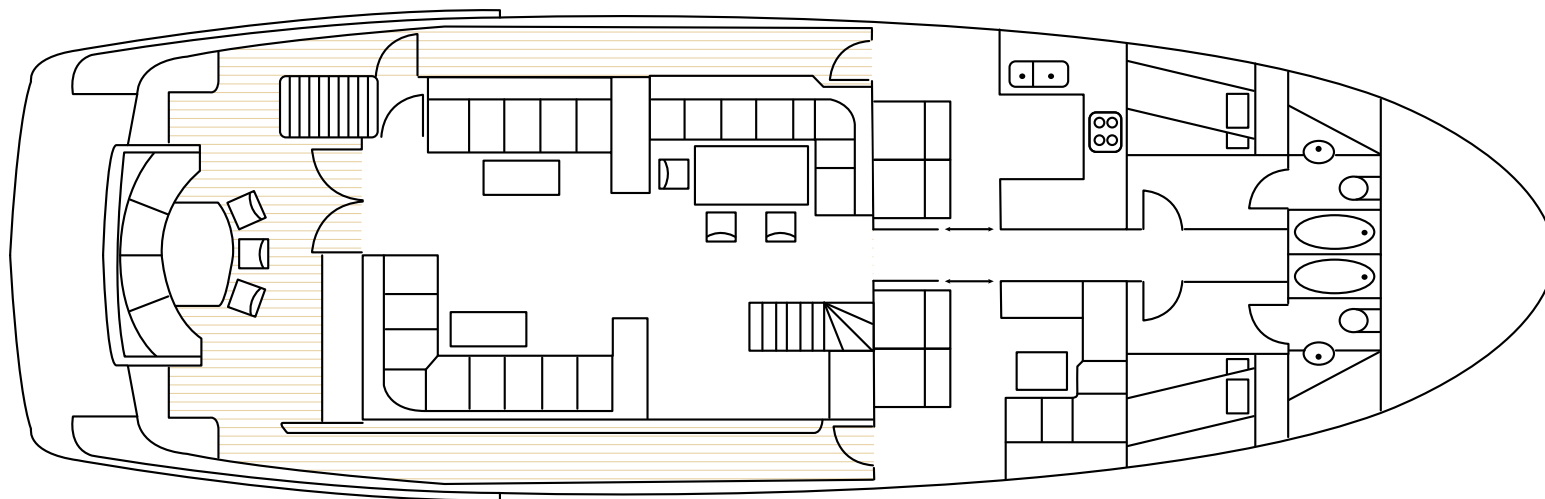
Sun Deck



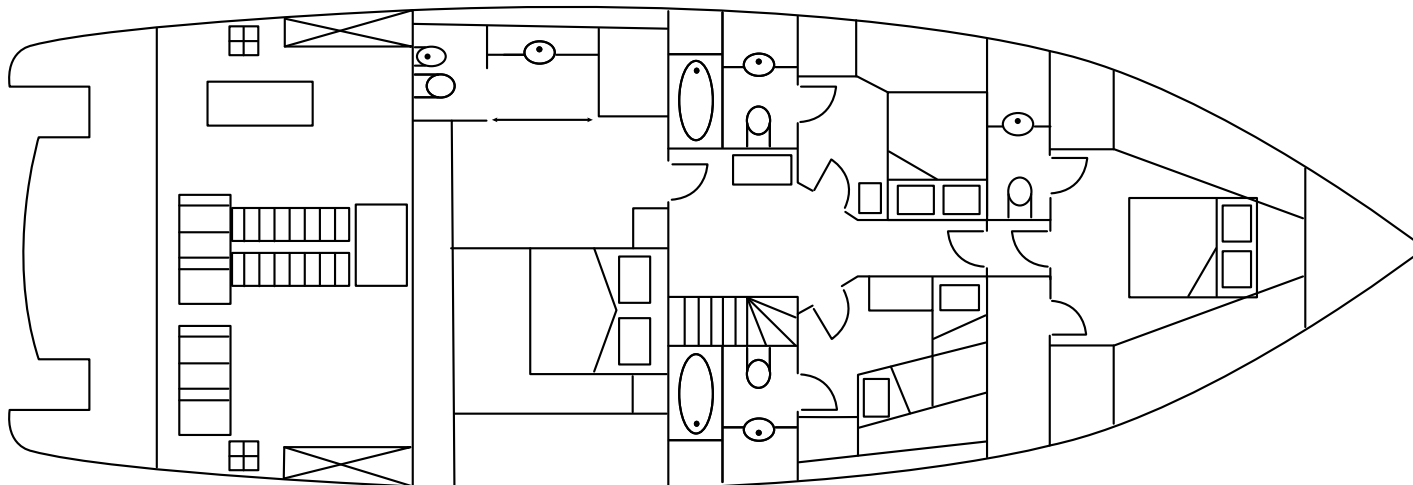
Bridge Deck



Main Deck



Lower Deck





# Moravia

YACHTING



## Contact

**Sam Tucker**

Sales Broker

+44 7548 765406 | [sam.tucker@moraviayachting.mc](mailto:sam.tucker@moraviayachting.mc)

While every effort has been made to ensure that the information contained in this document is accurate as at the date of production, the accuracy of such information cannot be guaranteed. Moravia Yachting gives no representation, warranty or undertaking, express or implied, as to: the accuracy, reliability, completeness or reasonableness of the information contained in this document; the condition of a featured yacht and/or its equipment; the seaworthiness of a featured yacht; or the suitability and/or availability of a featured yacht for purchase or charter. The fees, specifications, figures, images and comments included in this document are subject to change without notice. This document has been produced by Moravia Yachting at the request of the person identified on the front cover for discussion purposes only and is confidential. This document must not be copied or distributed to any third party, in whole or part, without Moravia Yachting's express written permission. Moravia Yachting hereby expressly excludes any liability howsoever arising in respect of any inaccuracies or errors in the information contained in this document, to the fullest extent permitted by law.