



Moravia  
YACHTING



## Shockwave

Builder	Delta Powerboats
Year/Refit	2020/2022
LOA	25.7m (84' 5")
Beam	6.72m (22' 1")
Draft	1.72m (5' 8")
GT	85
Cabins	4
Guests	8
Speed	39/26 kts
Price	€4,250,000 VAT Paid



A Hill Robinson Company





Salon





Salon





Dining





Master Cabin





Hallway





Main Deck





Main Deck





Sun Deck





Bow





Sun Deck





Tender







## DIMENSIONS

Length	25.7m (84' 5")
Waterline Length	23.8m (78' 2")
Beam	6.72m (22' 1")
Draft	1.72m (5' 8")
Displacement	45 metric tons
Gross Tonnage	85 GT

## CONSTRUCTION

Hull / Superstructure	Carbon fibre / Carbon fibre
Deck Material	Teak
Naval Architect	Lars Modin
Interior Design	Lars Modin
Exterior Design	Lars Modin

## CLASSIFICATION & CERTIFICATIONS

Classification Society	RINA
MCA	Compliant

## PERFORMANCE

Maximum Speed	39 knots
Cruising Speed	26 knots
	Fuel consumption at cruising speed: 250 l/hr
Range	525 nm @ 26kn

## TANKAGE

Fuel	2 x 2,750 L
Fresh Water	1,200 L
Grey Water	430 L
Black Water	430 L

## MACHINERY

Engines	3 x Volvo Penta (D13-IPSI350) 1,000hp
Engine Hours	Starboard: <b>709</b> , Port: <b>710</b> , Centre: <b>709</b> (May 2023)
Generators	2 x Fischer Panda 30KW with stainless steel soundbox and dedicated balanced
Generator Hours	Starboard: <b>856</b> , Port: <b>916</b> (May 2023)

## PROPULSION & STEERING

- 3 x Volvo Penta IPS 1350 systems - engines, pods, integrated control systems
- 1 x Volvo Penta electronic steering system
- 2 x Volvo Penta electronic gear/throttle (main/flybridge)
- 4 x Volvo Penta docking stations/joystick (main/flybridge/SB aft wing/P aft wing)
- 1 x Volvo Penta trip computer program reports to Garmin and Volvo 7" displays.
- 1 x Volvo Penta GPS anchor program (DPS Dynamic Positioning System)

## STABILISERS

Stabilisers at anchor	Yes
Stabilisers underway	Yes
Stabilisers details	SeaKeeper16 gyro stabilizer with controls



## MECHANICAL

---

- 1 x Bowthruster, SidePower, 240 Tci, 15hp, 24V
- 2 x Water heaters, 80 l each
- 1 x Freshwater system with dual freshwater pumps and accumulator tank, 230V
- 1 x Domestic Water Maker SeaxChange
- 1 x Wash n Go Deck Water softener with 3x Filter Membranes
- 1 x Jabsco washdown pump hose bibbs
- 1 x Webasto air conditioner 140,000 BTU
- 1 x Webasto compressor chiller
- 6 x Webasto fancoils, salon
- 1 x Webasto fancoil for each cabin
- 1 x Webasto fancoil for owner's bathroom
- 3 x Wiper motors with variable speed and twin arm
- 1 x Wiper washdown pump and reservoir
- 1 x Opacmare passerelle with remote and fixed controls
- 1 x Opacmare "transformer" swim platform for launch of additional toy or to be used as passerelle 1 x  
Delta Air 24V ventilation system, 1 unit for each cabin and 2 units for salon area
- 1 x spare propeller
- 6 x Underwater led lights, white
- 5 x 24V bilge pumps with float switch and alarm (total onboard)
- 3 x Manual bilge pumps

## ELECTRICAL

---

- 24V electrical by CZone. All distribution of 24V by CZone digital bus system.
- 2 x MasterVolt AGM 5AH genset starting batteries
- 2 x MasterVolt AGM 180AH Navigation system battery bank
- 1 x MasterVolt navigation system charger 50A
- 3 x MasterVolt AGM 160AH main-engine starting batteries
- 12 x MasterVolt lithium 200AH service batteries
- 1 x ASEA Frequency converter/transformer for 110V@60Hz/220V@50Hz 36 Kva
- 1 x MasterVolt charger for main engine batteries @35A
- 4 x MasterVolt charger for lithium house bank 100A
- 1 x MasterVolt charger for genset battery @20A
- 3 x Mastervolt inverters 5,000W
- 2 x CZone 12" displays for status and control of the electrical systems (crew cabin/main station)
- 12 x Remote main service battery switches
- 1 x 63A shore power cable on glendinning reel
- 1 x Set of Lopolight led navigation lights
- 2 x Horns

## COMMUNICATION & NAVIGATION EQUIPMENT

---

- 21 x Garmin Radar X-Band
- 1 x Flir M300
- 2 x Garmin handheld VHF's



## ENTERTAINMENT

---

- 3 x Apple TV 4K synced and fully integrated with all cabins
- Sonos Intergrated music system (Full zoned)
- Control 4 System- incl. 5x Control 4 touch screen remotes
- Playstation 4 with 2 x remotes
- Pepwave Highspeed modem with complete coverage of entire yacht

## DOMESTIC APPLIANCES, EQUIPMENT & LAUNDRY

---

- 1 x Miele Induction Hob
- 1 x Miele speed oven (oven/microwave)
- 2 x Miele full-size (6 ft. tall) fridge/freezer with pin-locks
- 1 x Miele dish washer
- 1 x Stainless steel double sink
- 1 x Vola faucet
- 1 x Kitchen extraction fan, 220V with carbon flter + outside ventilation (not a recirculating unit)
- 1 x set of stemware/glassware, all custom-ftted in cabinets
- 1 x Miele washing machine, 5kg loads
- 1 x Miele dryer

## ACCOMMODATION

---

Completed to an owner's specifications, the 88 Carbon features a world-class Scandinavian designed interior that is highlighted by exceptional visibility, high-end finishes and generous storage. Designed for owner/operators or to run with a small professional crew, the 88 features a full-beam queen size master suite, a VIP and two twin cabins along with accommodations for four crew members.

### Owner's stateroom

- Queen size bed
- Air condition outlet and control
- Skylights
- Apple TV
- HiFi zone owner's cabin

### VIP guest stateroom

- Queen size bed
- Air condition outlet and control
- Apple TV
- Hi-Fi zone VIP guest cabin
- 220V BATHROOM, 12V, and USB outlets

### Guest staterooms

- Twin beds
- Air condition outlets and controls
- Apple TVs
- Hi-Fi zones guest cabins
- 220V, 12V, and USB outlets



## DECK

---

- 1 x Hand-laid, vacuum-glued teak deck
- 1 x Stainless steel, custom-fabricated pennant pole, bow
- 1 x Stainless steel, custom-fabricated fag pole, aft
- 60 x Courtesy lights with day/night zones for guest safety and ease of navigation
- Lewmar fush hatches used throughout - except for teak clad hatch at forecastle access
- Multiple sound zones with Sonance Audio drivers and full wireless Control4 management

## PAINT

---

- Hull and superstructure in white gelcoat, 1 x waterline in black gelcoat

## TENDER & TOYS

---

- Williams 345
- 1 x Tender garage light
- 1 x Opacmare transformer lift 3382
- 1 x HB Technik electrohydraulic garage door with controls 1 x Aircompressor outlet

*Note: Subject to change and/or negotiation during the buying process.*

## DIVING

---

- Dive compressor Junior 2

## SAFETY & SECURITY

---

- 12 x Automatic life vests
- 2 x Life rafts, 8 persons each, Plastimo in hard canister, stored underneath bow sunpad
- 2 x Jon Buoy, carbon fibre finish
- 1 x Set flares
- 1 x Toolkit
- 1 x Set cordless drill
- 1 x Set first aid kit
- 1 x Set Volvo Penta spare parts
- 1 x EPIRB, fixed mounting
- 1 x Portable emergency bilge pump with 20m hose
- 12 x Fenders
- 12 x Mooring lines in various lengths
- 1 x Spare anchor 30kg with 60m line

## ON SHORE

---

- 1 x Stainless steel slider system for tender

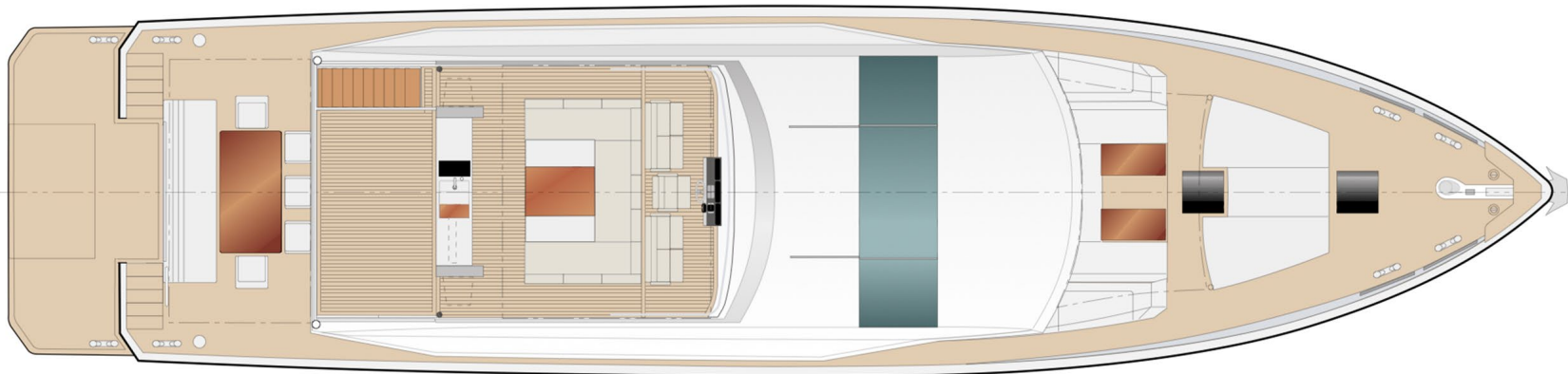
## REFIT LOG

---

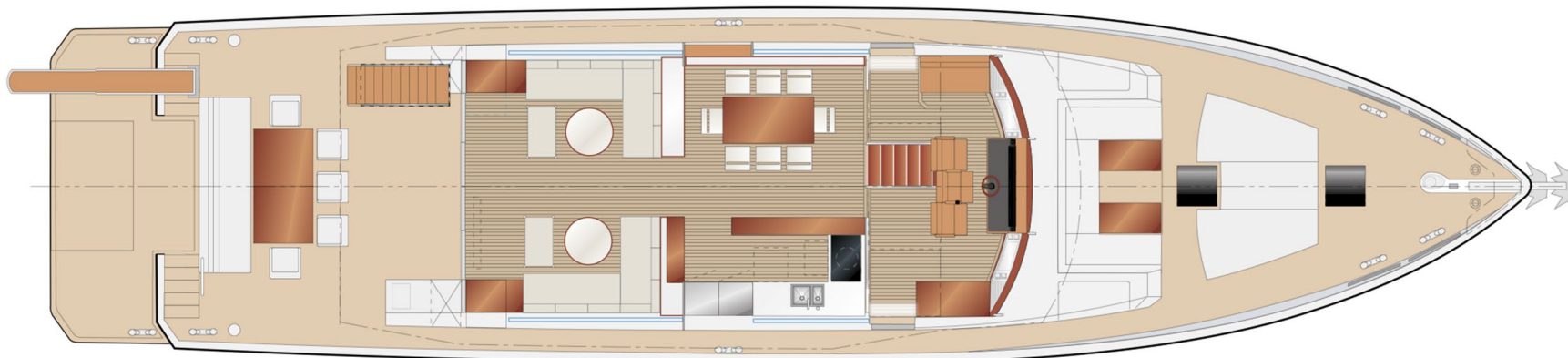
- New anchor system



# General Arrangement



Top Deck



Main Deck



Interior





# Moravia

YACHTING



## Contact

+377 93 10 29 29  
[moraviayachting.mc](http://moraviayachting.mc)

While every effort has been made to ensure that the information contained in this document is accurate as at the date of production, the accuracy of such information cannot be guaranteed. Moravia Yachting gives no representation, warranty or undertaking, express or implied, as to the accuracy, reliability, completeness or reasonableness of the information contained in this document; the condition of a featured yacht and/or its equipment; the seaworthiness of a featured yacht; or the suitability and/or availability of a featured yacht for purchase or charter. The fees, specifications, figures, images and comments included in this document are subject to change without notice. This document has been produced by Moravia Yachting at the request of the person identified on the front cover for discussion purposes only and is confidential. This document must not be copied or distributed to any third party, in whole or part, without Moravia Yachting's express written permission. Moravia Yachting hereby expressly excludes any liability howsoever arising in respect of any inaccuracies or errors in the information contained in this document, to the fullest extent permitted by law.





# Moravia

YACHTING



## Contact

**Tim Carbury**  
Sales Broker

+377 6 43 91 25 70 | [tim.carbury@moraviayachting.mc](mailto:tim.carbury@moraviayachting.mc)

**Sam Tucker**  
Sales Broker

+44 7548 765406 | [sam.tucker@moraviayachting.mc](mailto:sam.tucker@moraviayachting.mc)

While every effort has been made to ensure that the information contained in this document is accurate as at the date of production, the accuracy of such information cannot be guaranteed. Moravia Yachting gives no representation, warranty or undertaking, express or implied, as to the accuracy, reliability, completeness or reasonableness of the information contained in this document; the condition of a featured yacht and/or its equipment; the seaworthiness of a featured yacht; or the suitability and/or availability of a featured yacht for purchase or charter. The fees, specifications, figures, images and comments included in this document are subject to change without notice. This document has been produced by Moravia Yachting at the request of the person identified on the front cover for discussion purposes only and is confidential. This document must not be copied or distributed to any third party, in whole or part, without Moravia Yachting's express written permission. Moravia Yachting hereby expressly excludes any liability howsoever arising in respect of any inaccuracies or errors in the information contained in this document, to the fullest extent permitted by law.