



Moravia  
YACHTING



## Unreel

Builder	Pershing Yachts
Year/Refit	2023
LOA	70' 3" (21.42m)
Beam	17' 5" (5.3m)
Draft	5' (1.5m)
Cabins	3
Guests	6 guests in 3 cabins, 16 cruising
Speed	50 knots top speed /42 knots cruising
Price	\$4,300,000 (US Duty Paid)



A Hill Robinson Company









Salon





Salon





Salon





Salon





Master Cabin





Master Cabin





Master Cabin





Master Cabin - En Suite





VIP Cabin





VIP Cabin - En Suite





Twin Cabin





Twin Cabin





Twin Cabin - En Suite





Helm





Helm





Galley





Galley





Main Deck - Aft





Main Deck - Aft





Main Deck - Aft





Main Deck - Aft





Main Deck - Aft





Foredeck





Foredeck





Swim Platform + Tender Garage























## MAIN SPECIFICATIONS

Flag	USA
Length	70' 3" (21.42m)
Beam	17' 5" (5.3m)
Draft	5' (1.5m)
Displacement (unladen)	35 Tonnes (77,162 lb)
Year Built	2023
Builder	Pershing
Naval Architect	Pershing
Interior Design	Pershing / Marty Lowe Interior
Exterior Design	Fulvio De Simoni
Hull Construction	Composite GRP + Carbon Fiber
Superstructure	Composite GRP + Carbon Fiber
Certification	B + F + AA (Sound Emission) RINA S.P.A.

## MACHINERY

Main Engines	2 x Man V12 1,800 hp
Engine Hours	Port engine hours - 246 April 2024 Starboard engine hours - 246
Gearboxes	Surface Drivers Maximum
Speeds	speed - 50 knots Cruising speed - 42 knots 300 nm
Range	(cruising)

## AUXILIARY MACHINERY & ELECTRICAL SYSTEM

Generator Hours	550 hours April 2024
Electric Power	Inverter Victron Phoenix 24/3000 120 USA

## TANK CAPACITIES (approximate)

Fuel Capacity	951 US Gallons (3,600 litres)
Water Capacity	211 US Gallons (800 litres)

## ANCILLARY EQUIPMENT

Stern Thruster	Electric
Stabilisers	Seakeeper 2 x NG6
Fuel/Oil/Water separator	Racor

## SAFETY & SECURITY EQUIPMENT

Alarms & Monitoring	Aft camera
---------------------	------------

## NAVIGATION EQUIPMENT

Chart Plotter	Full Simrad navigation (monitor 19" - different from std 12" version)
AIS	AIS Simrad

## AUDIO/VISUAL ENTERTAINMENT SYSTEM

Main Salon	Apple TV cad system (in salon and master cabin)/ TV 65"
Lounge	TV 49"
Owners Cabin	TV 65"
Guest Cabin	TV 24"
Other	4G system connection/ LTE USA

## DOMESTIC EQUIPMENT

Main Galley	Ice-maker raritan USA
Laundry	Washer dryer machine USA

## TENDERS & WATER TOYS EQUIPMENT

Tenders	Williams 325 Jet Tender, Tender predisposition for dry docking/launch
---------	--

## ACCOMODATION

**6 guests in 3 cabins, 16 cruising**

### Master Cabin

- Double bed
- Mini fridge in the master cabin

### Master En-Suite

- Bidet
- Shower
- Corian shower plate
- Parquet floor

### VIP Cabin

- Double bed

### VIP En-Suite

- Shower, floor in Corian

### Guest Twin Cabin

- Twin Beds

### Guest En-Suite

- Shower

### Crew Area

### Captain's Cabin

- Single bed with storage

### Captain's En-Suite

- Shower

## PRICE

**\$4,300,000 (US Duty Paid)**



## UPGRADES AND OPTIONS

---

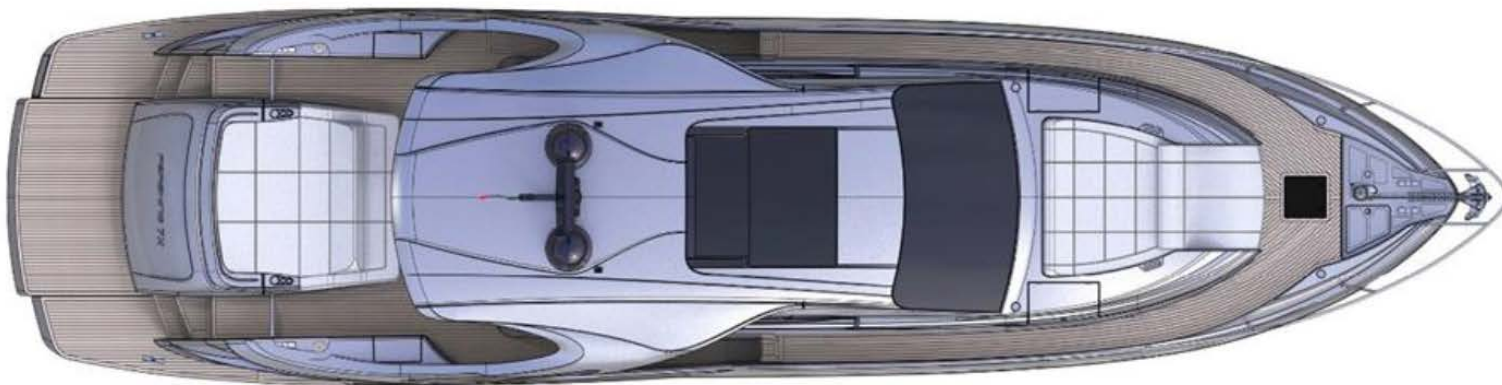
- Galley top - different than standard
- A/V: Premium sound upgrade - amplifier further upgraded aftermarket
- Full Simrad Navigation (19" monitors)
- Carpet in cabins upgraded from standard
- Additional cleats port and starboard
- Fridge in cockpit
- Kimberly Pucci decor package

## AFTERMARKET ADDITIONS

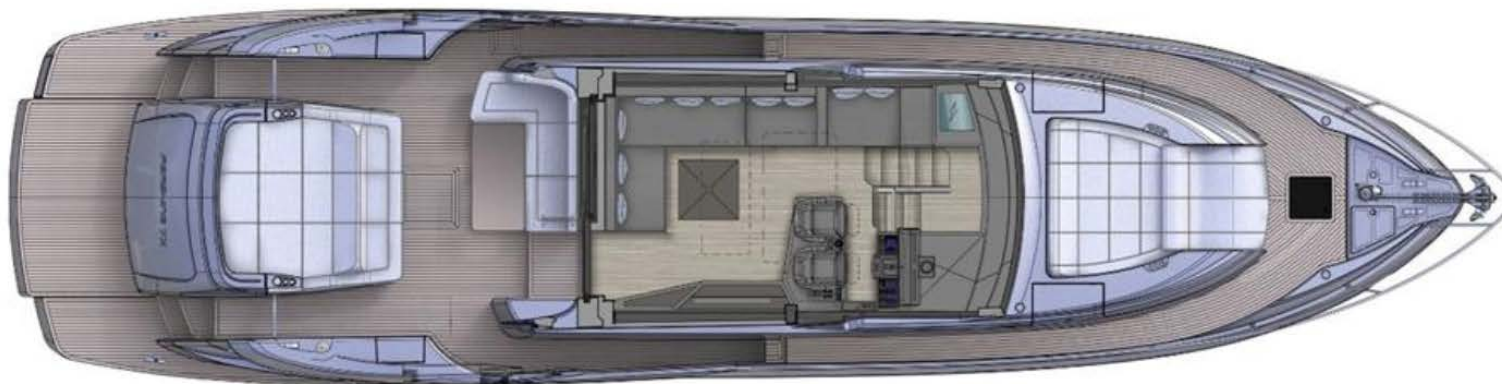
---

- GOST tracking, cameras and alarm system
- Starlink Marine System with VPN
- Hardwired wireless access points throughout boat
- Sony PS5 in Salon
- AppleTV at all TVs for streaming
- Additional cameras in galley, salon, cockpit and engine room
- Yachtcontroller remote system
- FLIR 364C Sound Imaging Camera

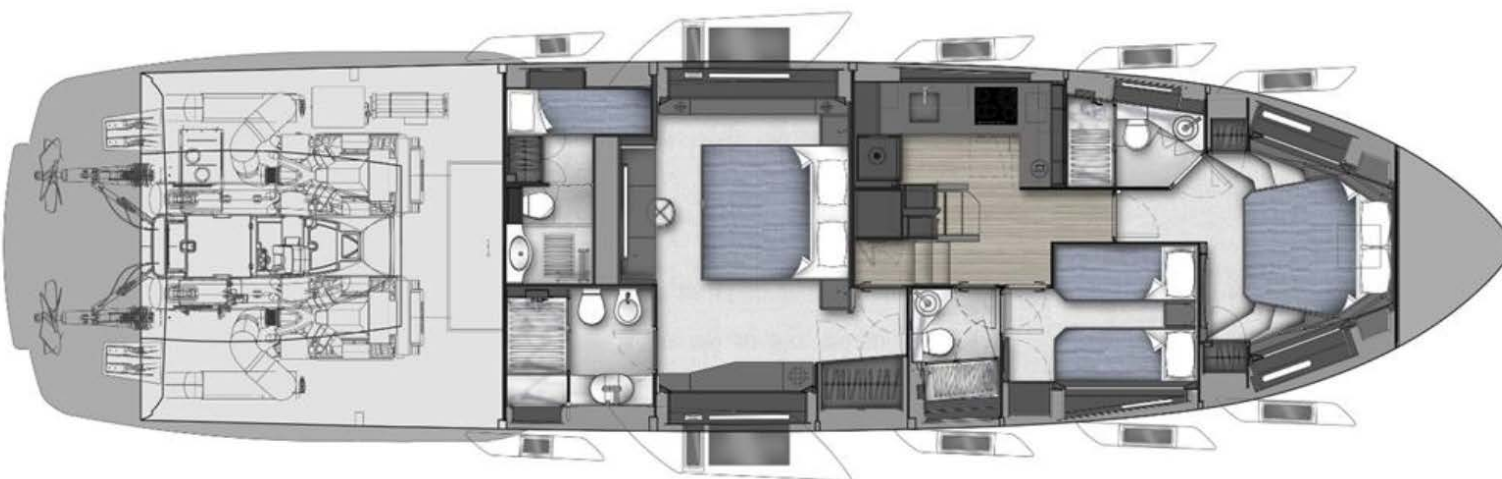




Plan View



Main Deck



Lower Deck





Moravia  
YACHTING



## Contact

**Alastair Callender**  
Moravia Yachting - Americas  
Yachts Sales & Charter Broker  
+1 954 261 3559 | [alastair.callender@moraviayachting.com](mailto:alastair.callender@moraviayachting.com)

[moraviayachting.com](http://moraviayachting.com)

While every effort has been made to ensure that the information contained in this document is accurate as at the date of production, the accuracy of such information cannot be guaranteed. Moravia Yachting gives no representation, warranty or undertaking, express or implied, as to: the accuracy, reliability, completeness or reasonableness of the information contained in this document; the condition of a featured yacht and/or its equipment; the seaworthiness of a featured yacht; or the suitability and/or availability of a featured yacht for purchase or charter. The fees, specifications, figures, images and comments included in this document are subject to change without notice. This document has been produced by Moravia Yachting for discussion purposes only and is confidential. This document must not be copied or distributed to any third party, in whole or part, without Moravia Yachting's express written permission. Moravia Yachting hereby expressly excludes any liability howsoever arising in respect of any inaccuracies or errors in the information contained in this document, to the fullest extent permitted by law.