



# PROJECT NOON 52

<b>Builder</b>	Tureddi
<b>Year/Refit</b>	2027
<b>LOA</b>	52m (170' 6")
<b>Beam</b>	10.6m (34' 7")
<b>Draft</b>	2.7m (8' 9")
<b>Gross Tonnage</b>	499
<b>Guests</b>	12 in 6 cabins
<b>Maximum Speed</b>	19 Knots
<b>Cruising Speed</b>	15 Knots
<b>Price</b>	€25,000,000



MAIN SALON





MASTER STATEROOM





MASTER STATEROOM





MASTER STATEROOM – EN SUITE





AFT DECK – DINING





JACUZZI





BEACH CLUB







# YACHT SPECIFICATIONS

## DIMENSIONS

<b>Length</b>	52m (170' 6")
<b>Beam</b>	10.6m (34' 7")
<b>Draft</b>	2.7m (8' 9")

## GENERAL

<b>Year</b>	2027
<b>Builder</b>	Tureddi
<b>Naval Architect</b>	Tureddi
<b>Exterior Design</b>	Leonardo Cecchi - Yellow Addition Design Studio
<b>Interior Design</b>	Leonardo Cecchi - Yellow Addition Design Studio
<b>Hull Construction</b>	Steel and Aluminium
<b>Superstructure</b>	Steel and Aluminium

## ACCOMMODATION

<b>Number of Cabins</b>	6 4 Double Guest Cabins - Lower
<b>Deck</b>	2 Master Cabins - Main Deck
<b>Total Guests</b>	12 in 6 Cabins
<b>Total Crew</b>	11

## CERTIFICATIONS

<b>Flag</b>	N/A
<b>Location</b>	N/A
<b>Classification</b>	RINA Class - Compliance with Regulations: Built in compliance with IMO regulations

## TECHNICAL INFORMATION

<b>Engines</b>	MAN V12 Diesel
<b>Engine Power</b>	TBC
<b>Engine Hours</b>	Port - TBC / Starboard - TBC
<b>Fuel Capacity</b>	105,000 litres
<b>Fuel Consumption</b>	TBC
<b>Water Capacity</b>	19,000 litres
<b>Clean Lub Oil</b>	400 litres
<b>Sludge Oil</b>	400 litres
<b>Hydraulic Oil</b>	200 litres
<b>Grey Water</b>	5,000 litres
<b>Black Water</b>	3,500 litres
<b>Range at cruising speed</b>	3,500 NM
<b>Range at 12 Knots economical cruising speed</b>	6,000 NM
<b>Maximum Speed</b>	19 Knots
<b>Cruising Speed</b>	15 Knots
<b>Gross Tonnage</b>	499 (approx)

## ANCILLARY EQUIPMENT

<b>Bow Thruster</b>	HRP 90kW, TBC
<b>Stabilisers</b>	Naiad Dynamics, TBC
<b>Bilge Separator Tank</b>	1,000 litres
<b>Watermaker</b>	Hot Water: High-capacity boiler
<b>Heating</b>	Centralized heating system
<b>Air Conditioning</b>	Centralized climate control system

## SAFETY & SECURITY EQUIPMENT

### Safety

- Surveillance cameras
- Intrusion alarm
- Fire detection system

### Safety Equipment

- Life rafts
- Life jackets
- Luminous signaling buoys.

### Fire

- Fire Suppression System:
  - Automatic extinguishing system in all areas, fire alarms connected to the control center.
- Emergency Procedures: Evacuation plans, first aid kit

# YACHT SPECIFICATIONS

## COMMUNICATION EQUIPMENT

---

- VHF
- Satellite system

## NAVIGATION EQUIPMENT

---

### Navigation System

- Furuno Radar
- GPS
- Chart plotter

## AUDIO/VISUAL ENTERTAINMENT SYSTEM

---

### Entertainment

- Integrated audio-video system
- Satellite TV

## TENDERS & WATER TOYS EQUIPMENT

---

### Water Sports Equipment

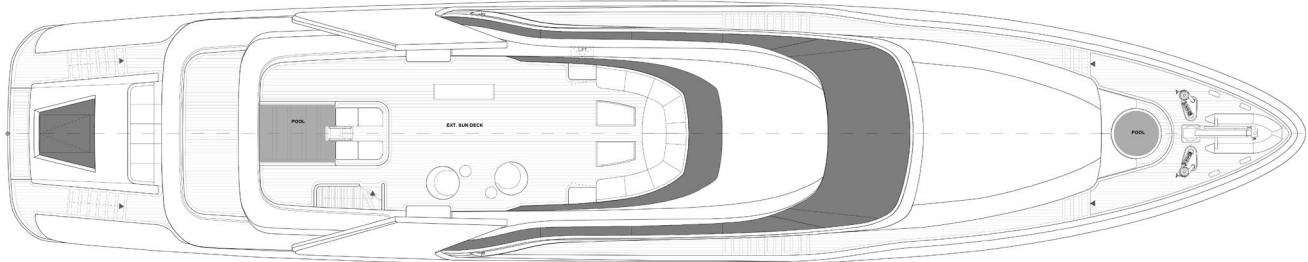
- Tender,
- Jet-ski,
- Snorkeling gear (EXTRAS)
- Others: 2XPool, Sun Bar

## PRICE

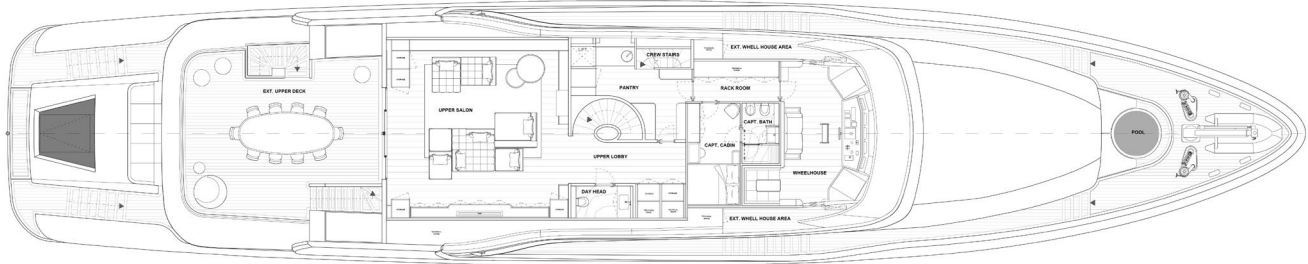
---

**€25,000,000**

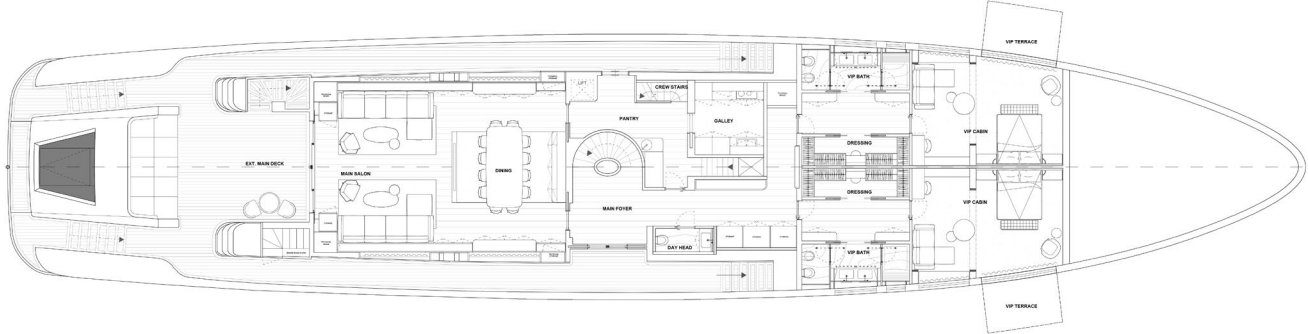
# GENERAL ARRANGEMENT



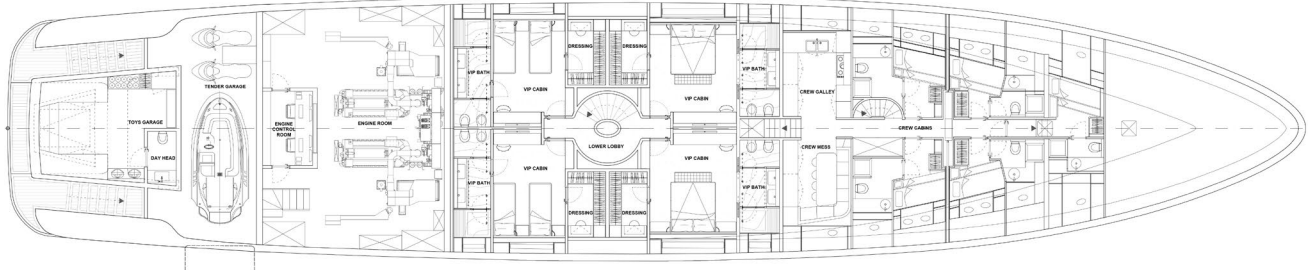
SUN DECK



UPPER DECK



MAIN DECK



LOWER DECK


These particulars have been prepared from information provided by the sellers and are intended as a general guide to the vessel. We cannot, however, be liable for any inaccuracy. It is up to the purchaser to confirm details of concern to him by survey, inspection and/or enquiry of the seller and to ensure that the purchase contract properly reflects his concern and specific details upon which he may rely. We always advise an independent survey.

## CONTACT

+377 93 10 29 29  
moraviayachting.mc



While every effort has been made to ensure that the information contained in this document is accurate as at the date of production, the accuracy of such information cannot be guaranteed. Moravia Yachting gives no representation, warranty or undertaking, express or implied, as to: the accuracy, reliability, completeness or reasonableness of the information contained in this document; the condition of a featured yacht and/or its equipment; the seaworthiness of a featured yacht; or the suitability and/or availability of a featured yacht for purchase or charter. The fees, specifications, figures, images and comments included in this document are subject to change without notice. This document has been produced by Moravia Yachting at the request of the person identified on the front cover for discussion purposes only and is confidential. This document must not be copied or distributed to any third party, in whole or part, without Moravia Yachting's express written permission. Moravia Yachting hereby expressly excludes any liability howsoever arising in respect of any inaccuracies or errors in the information contained in this document, to the fullest extent permitted by law.

 A Hill Robinson company

  
**Moravia**  
YACHTING