



ETERNITY

Builder	Codecasa
Year/Refit	2010 / 2022
LOA	65m (213' 4")
Beam	11.2m (36' 9")
Draft	3.5m (11' 6")
Cabins	7
Guests	14
Maximum Speed	17 Knots
Cruising Speed	14 Knots
Price	€35,000,000 Ex VAT





MAIN SALON





MAIN SALON





MAIN SALON





MAIN SALON





MAIN SALON





DINING





STAIRS





MASTER STATEROOM





MASTER STATEROOM





MASTER STATEROOM - OFFICE





MASTER STATEROOM - EN SUITE





DOUBLE STATEROOM





DOUBLE STATEROOM





DOUBLE STATEROOM - EN SUITE





TWIN STATEROOM





MAIN DECK - DINING





MAIN DECK - DINING





MAIN DECK - BAR





AFT DECK





SUN DECK





FORE DECK - JACUZZI



YACHT SPECIFICATIONS

DIMENSIONS

Length	65m (213' 4")
Beam	11.2m (36' 9")
Draft	3.5m (11' 6")

GENERAL

Year	2010 / 2022
Builder	Codecasa
Naval Architect	Codecasa
Interior Design	Della Role Design Refitted by Suzanne Lovell
Exterior Design	Cantieri Navali Refitted by Suzanne Lovell
Hull Construction	Steel
Hull Material	Steel
Gross Tonnage	1,046 GT

ACCOMMODATION

Guest Cabins	7
Guest Berths	14
Arrangement	1 Master, 4 Double, 2 Twin, 1 pullman beds in 2 twin cabins
Crew Cabins	8 crew cabins + captains' cabin
Crew Berths	17

Description of the interior and accommodation

Guest cabins are spread over two decks, with two double cabins appointed aft on the lower deck and two twins leading forward. The full beam Master and VIPs are located on the main deck. All of which are serviced by an elevator which provides access to all decks.

MACHINERY

Main Engines	2 x Caterpillar 3516B (1,825 Kw @ 1,600 rpm)
Total port engine hours	7,005 (6th February 2025)
Total stb engine hours	6,856 (6th February 2025)
Gearboxes	RainJet/Reintjes

Shafts

- 2 x Schaffran Propeller Shaft
- 2 x Intermediate Shafts
- Prime mover rating 2 x 1825 KW @ 1600 rpm Propeller Speed 323 rpm
- Two coupling flanges

Propellers

 Schaffran Propeller Fixed Pitch

- Rating 1825 KW @ 323 rpm, twin screw one right hand and one left hand turning prop
- Diameter 2100 mm
- No. of blades 6 per prop
- Material Cu3
- Skew Angle 48.73 deg. 46

Maximum speed	17 Knots
Cruising speed	14 Knots
Economy speed	12 Knots
Range at cruising speed	6,000 nm at 14 Knots

AUXILIARY MACHINERY & ELECTRICAL SYSTEM

Main Generators	Cat C9 175KW
Generators Hours	Port: 7005, Mid: 12303, Stbd: 12079
Emergency Generator	VOLVO PENTA D5A/7A Hours: 110 hrs
Electrical Shore Power	ASEA Power Systems 3 phase 480v Cables 2 x 200 AMP 480 Volt 3 Phase (Cam Locks)

TANK CAPACITIES (approximate)

Fuel Capacity (litres)	168,000
Water Capacity (litres)	34,000
Grey Water (litres)	7,400
Black Water (litres)	7,200

ANCILLARY EQUIPMENT

Steering System	Rolls Royce 4 steering pumps supplying 2 rudders
Bow Thruster	Schottel, 150KW
Stabilisers	Quantum Stabilisers with Zero Speed
Fuel Separator	Alpha Laval
Oil/Water separator	Facet CPS B MKIII BilgMon488
Bilge/Fire Pump	
Boilers	2 x serviced by 5 electrical heaters of 60 KW total
Cooling Water System	
Watermaker	IDROMAR
Air Conditioning	Carlyle Compressors/Alpha Laval Evaporators/Condensers
Anti Fouling System	Cathelco

YACHT SPECIFICATIONS

SAFETY & SECURITY EQUIPMENT

Life rafts	4 x 25-man SOLAS pack A
Medical	MedAire Subscription with Med O2 Defibrillators, crash and fluid packs, stretchers
Fire	Dragar BA Kits
Engine firefighting system	SEMSAFE with integrated Foam system
SEMSAFE	Water mist System servicing all accommodation areas
Fire Extinguishers	Per Class and Flag Requirements LY3. Co2 Fixed Galley/AV rack, Dry Powder, Co2
Extinguishers	Lithium Ion Battery
Alarms & Monitoring	Alarm system
E.P.I.R.B	2 x CAT 1&2
	Bilge pumps
	Loud hailer PA system through phone network
	Closed circuit T.V. Throughout vessel per ISPS code with P.T.Z cameras
	Intercom. Dockside Intercom hardwired to phone system
	Security Vessel Equipped to ISPS standards, CCTV, Piracy Buttons etc

COMMUNICATION EQUIPMENT

Satcom	SAILOR
SSB	SAILOR
Cellular System	PEP WAVE
VHF	Radiotelephones SAILOR
Telephone	Panasonic PURE IP-PBX
UHF Communications	Motorola 2 x Repeaters multiple frequencies

NAVIGATION EQUIPMENT

Magnetic Compass	C-PLATH
Gyro Compass	NAVIGAT
Rudder indicator	Sperry Marine
Automatic Pilot	Sperry Marine
Log	Sperry Marine
Echo Sounder	Sperry Marine
Radar	SPERRY MARINE X and S Band Radars
Plotter	Full ECDIS COMPLIANT- Sperry Integrated Bridge
GPS	SAAB
Navtex	Wind Instruments Sperry Marine
AIS	SAAB
	LRIT SAILOR T & T
BNWAS	Furuno

DECK EQUIPMENT

Anchor	2 x Pool TW full balanced high holding power anchors
Chain	Length 6 shackles Port and Starboard
Windlasses	2 x Forward Anchoring and Mooring operations OFFICINA NAVALE "NANNI"
Cranes	Fore Deck Crane Sanguineti Chiavari 1 x MOB Rescue Crane 1 x Auxiliary Jet Ski Cran
Capstans	2 x Aft for mooring operations OFFICINA NAVALE "NANNI"

Bathing Platform	Large Swim Platform area with integrated swim ladder Napoli Paolo
Passarelle	Napoli Paolo Sun Awning Fixed Bridge deck and Main deck
Deck shower	3 x 2 x Swim Platform 1 x Foredeck
Searchlight & Horn	Furuno

AUDIO/VISUAL ENTERTAINMENT SYSTEM

- Satellite TV Direct TV analogue and digital platforms
- Crestron System/Remotes
- Modern Streaming Access Serviced by USA based VPN Apple TV, Disney, Prime, HBO, HULU
- 2024 AV upgrade of systems by AHT
- Kaleidoscope Movie Library
- PlayStation
- Simple connectivity of devices with Audio system to multiple locations or singular areas through Airplay, Bluetooth or via Wi-Fi address "one touch"
- TV Home cinema/Hi-Fi/Bluetooth in Salon
- TV Home cinema/Hi-Fi/Bluetooth in Sky Lounge
- TV/Hi-Fi/Bluetooth in Playroom
- Hi-Fi/Bluetooth in Master and VIP cabins
- Hi-Fi/Bluetooth in Twin cabin
- Wi-Fi high-speed internet systems
- 2 x Marine Starlink dishes providing Ultra-fast Data

These particulars have been prepared from information provided by the sellers and are intended as a general guide to the vessel. We cannot, however, be liable for any inaccuracy. It is up to the purchaser to confirm details of concern to him by survey, inspection and/or enquiry of the seller and to ensure that the purchase contract properly reflects his concern and specific details upon which he may rely. We always advise an independent survey.

YACHT SPECIFICATIONS

DOMESTIC EQUIPMENT

Galley equipment

- Refrigerators Manrico Francesconi LU-VE
- Freezers Manrico Francesconi LU-VE
- Ovens MKN Space Combi
- Microwaves
- Burners
- Dishwashers Miele
- Icemakers Scotsman
- Macerator
- Laundry equipment
- Washing Machines Miele
- Dryers Miele
- Elevator Otis Elevator servicing tank deck through to sundeck

TENDERS & WATER TOYS

Tender

- 7.6m (25') Castoldi Jet Drive
- Novurania 6.1m CAT 20' with hydraulic bow stairs for convenient beach access for the young and elderly

Jet ski

- 2 x FX SVHO Wave Runners

Diving equipment

- Diving compressor Bauer Dive Compressor
- Flyboard with 9m/30ft hose
- 2 x Aqua glide Columbia 130 Inflatable Kayaks
- 3 x Sea Bobs
- 2 x Inflatable Stand-up Paddleboards
- Lift Electric Hydrofoil Board
- FUNAIR Water Slide - bridge deck to waterline slide

- Aqua glide King of the Mountain Inflatable Climbing Wall and Slide
- Rebound 3.6m/12ft water trampoline
- FUNAIR 4m/13ft x 4m/13ft Inflatable
- Lagoon Pool
- 2 x Nauti boy 800 x 675 Runway/floating mat
- 4 x 1.8m/6ft foam rollup mats
- Snorkeling gear - various sizes
- Waterskies, wakeboards & tows, Metro Banana
- Boat (5 person)
- Retro Winged Inflatable (3 person), Inflatable Raptor (2 person)
- 4 x Aqua glide Single Donuts
- Beach BBQ set-up, full array of beach toys

WORK LIST/REFIT

2024

August-September 2024

- Extensive AV upgrade by AHT Engineering, Installation, Tuning
- New encoders/decoders
- Latest 4K streaming Device
- Updated IPAD controls Remotes wall units
- Rewired all areas
- Updated Rack units, P.D. U's
- ROKU platform to cater for both Apple and Android devices.
- Crestron-DM-NAX-8ZSA, DM NAX™ 8-Zone Streaming Amplifiers
- Updated Deck Umbrellas cushion cover fabrics
- Annual Maintenance Tasks to class and flag requirements

2023

- New Tender Novurania CAT20
- Annual Maintenance tasks to Flag and Class Requirements
- New Carpets Crew areas and Bridge

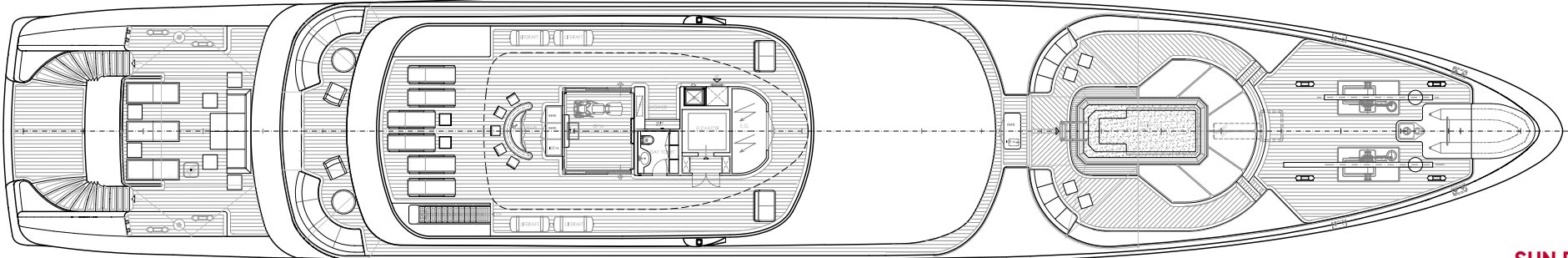
2022

- Class Intermediate Survey
- New propellers fitted (one extra propeller set in storage)
- New port shaft (new and extra starboard shaft in storage)
- Major overhaul on port main engine
- Re-building of main and emergency fire and bilge pumps
- Sandblasting and re-coating of freshwater tanks
- 3 x new LCD screens for bridge monitoring
- New B&G electro anemometer
- Sandblasting and re-coating of technical freshwater tank #8 dedicated to swim-spa

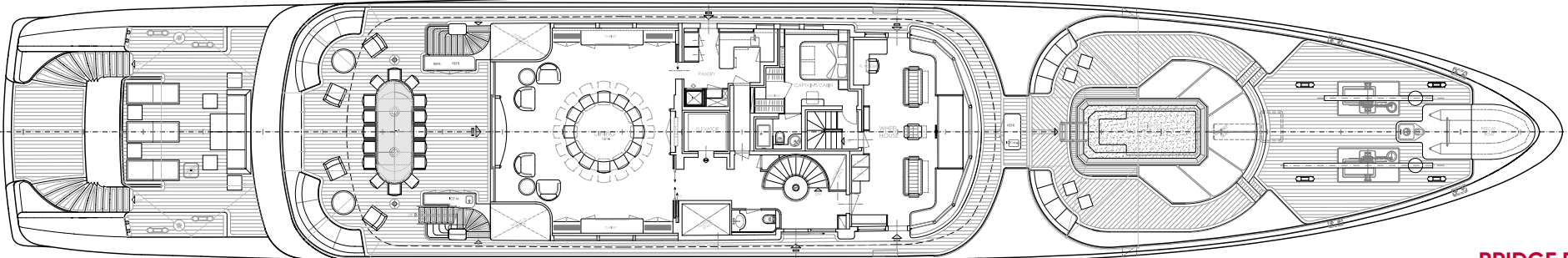
2021

- Completion of full PMS & AMCS power management system refit (Dekasis System) together with new main switchboard, programming and cabling
- Hydraulic hose replacement for all hydraulic operated equipment
- New magnetron on X&S band radars
- Annual Class/Flag Surveys

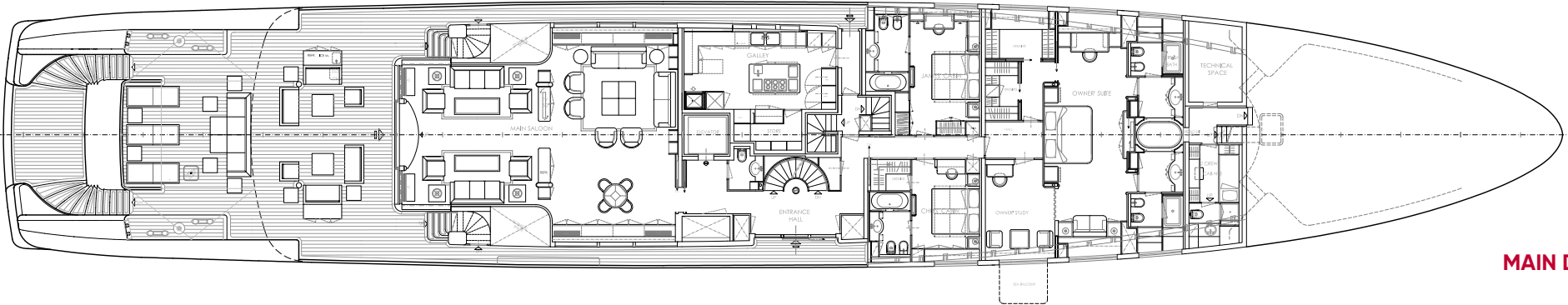
GENERAL ARRANGEMENT



SUN DECK

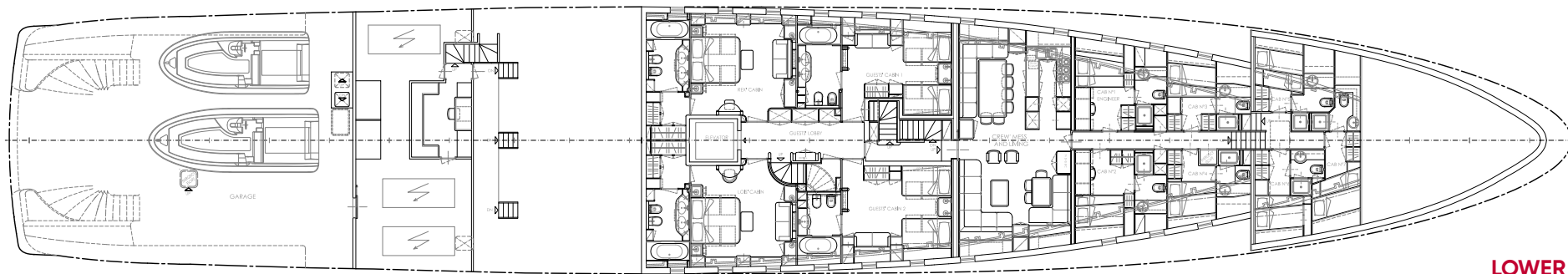


BRIDGE DECK

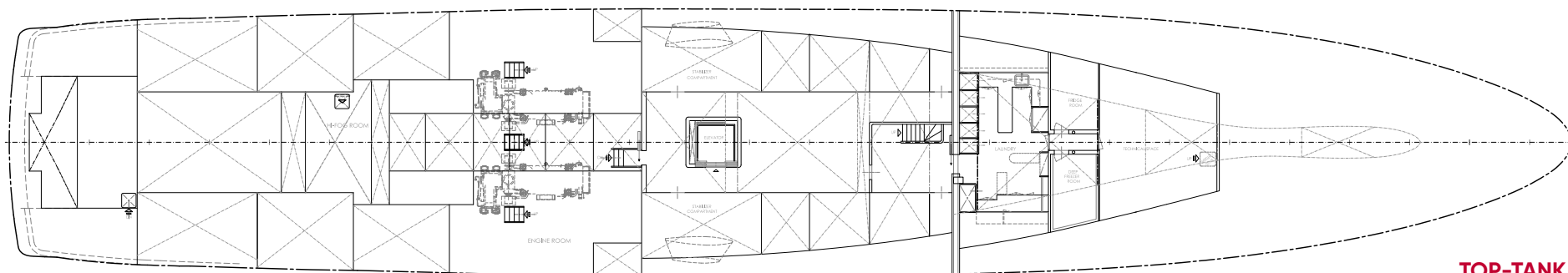


MAIN DECK

GENERAL ARRANGEMENT



LOWER DECK



TOP-TANK DECK


CONTACT

Adam Papadakis
Head of Sales / Sales Broker

+377 6 78 63 39 60
adam.papadakis@moraviayachting.mc
moraviayachting.mc



While every effort has been made to ensure that the information contained in this document is accurate as at the date of production, the accuracy of such information cannot be guaranteed. Moravia Yachting gives no representation, warranty or undertaking, express or implied, as to the accuracy, reliability, completeness or reasonableness of the information contained in this document, the condition of a featured yacht and/or its equipment, the seaworthiness of a featured yacht, or the suitability and/or availability of a featured yacht for purchase or charter. The fees, specifications, figures, images and comments included in this document are subject to change without notice. This document has been produced by Moravia Yachting at the request of the person identified on the front cover for discussion purposes only and is confidential. This document must not be copied or distributed to any third party, in whole or part, without Moravia Yachting's express written permission. Moravia Yachting hereby expressly excludes any liability howsoever arising in respect of any inaccuracies or errors in the information contained in this document, to the fullest extent permitted by law.

 A Hill Robinson company


Moravia
YACHTING