



# MOMI

<b>Builder</b>	Vismara Marine
<b>Year / Refit</b>	2021
<b>LOA</b>	23.99m (78' 7")
<b>Beam</b>	5.8m (19')
<b>Draft</b>	4-2.5m with lifting keel
<b>Guests Cabins</b>	3 plus 2 Bunks
<b>Guests</b>	10
<b>Speed</b>	11 Knots (under engine)
<b>Price</b>	€2,950,000 VAT Paid





SALÓN



SALON





SALON





SALON





MASTER CABIN





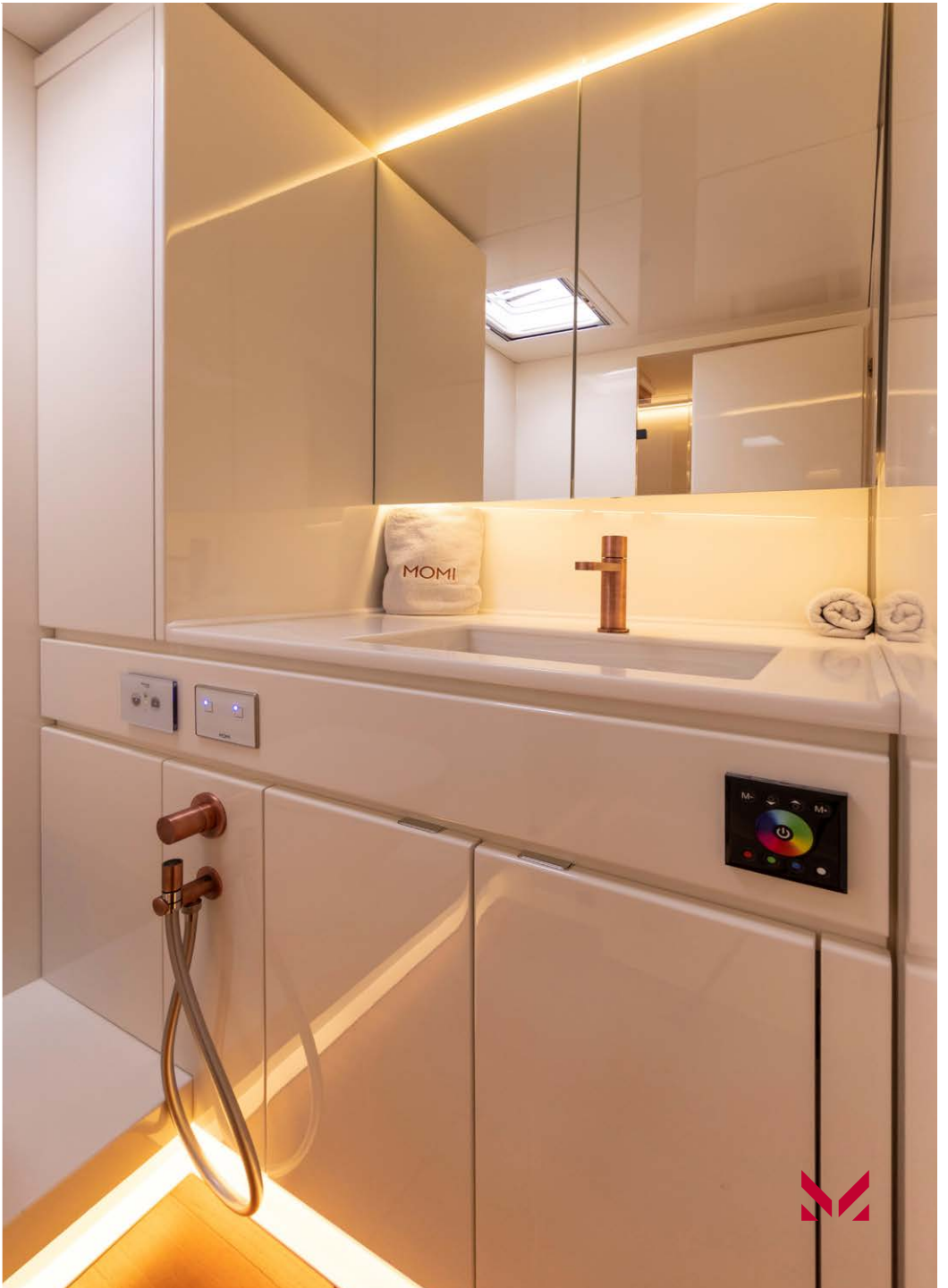
MASTER CABIN







MASTER BATHROOM





DOUBLE CABIN





DOUBLE CABIN – BATHROOM





SOFA/BUNK BED





CHART TABLE

















# YACHT SPECIFICATIONS

## MAIN SPECIFICATIONS

---

Flag	Italian
Length	23.99m (78' 7")
Beam	5.8m (19')
Draft	4m/2.5m Lifting Keel
Displacement	34
Year Built	2021
Builder	Vismara Marine
Naval Architect	Alessandro Vismara
Interior Design	Vismara
Exterior Design	Vismara
Hull Construction	Carbon Composite
Superstructure	Carbon
Classification	CE A

## CONSTRUCTION

---

### RCD Status

– CE Certification – A. A design category A with a number of 18 transportable persons is assigned to this unit, according to the ISO 12217-2. The hull was designed to face long sailings with weather conditions over level 8 Beaufort, with waves over 4m high.

### Hull, Deck & Superstructure Construction

- Hull is a glass fibre with carbon unidirectional local reinforcements sandwich structure with Corecell high performance for the hull
- Deck, cockpit and coach roof are build of carbon fibre sandwich structure with Divinycell High Performance
- Watertight bulkheads advanced composite materials using unidirectional and multiaxial impregnated carbon fabrics vacuum packed in epoxy matrix and post-cured at 60 ° for 12h. Unidirectional structural reinforcements of carbon will be inserted where necessary
- The floor structure is composed of longitudinal reinforcements with primary transverse reinforcements
- Approx. 220cm carbon fibre dolphin striker bowsprit incorporating anchor handling system and code 0 tack
- Tender garage for 3.2m tender with drop-down bathing platform and Quick PT1000 windlass for recovery the tender and compressor for tender and fenders
- Metallic blue painted topsides
- Teak laid deck deck and superstructure

## MACHINERY

---

Main Engine	Yanmar 4LV 230HP
Engine Hours	760 (Twin ZF electric single lever engine controls)
Gearboxes	Engine gear ZF 63A RID 2.708:1
Propeller	Varifold 4-bladed folding propeller
Speeds	11 Knots (maximum – engine)

## TANK CAPACITIES (approximate)

---

### Fuel Capacity

- 2 x 400 litre fuel tanks 150 litre day tank filled with electric pump with manual back up

### Water Capacity

- 2 x 340 litres fresh water capacity

## SAFETY & SECURITY EQUIPMENT

---

### Safety

- Safety equipment as prescribed by flag life saving
- 2 x Liferafts

### Fire

- 5 fire extinguishers
- Engine room fixed fire extinguisher system
- Battery room fixed fire extinguisher system

### Medical

- As prescribed by flag

# YACHT SPECIFICATIONS

## AUXILIARY MACHINERY & ELECTRICAL SYSTEM

---

### Generator (500 hrs)

- Kohler, 18EFKOZD, 1-Phase, diesel generator producing 18KW

### Electric Power

- 24v DC primary domestic system with 12vDC starting circuit and 220v AC via shorepower, generator and inverter
- Automatic switch inverter/charger based on power consumption of 230vDC devices. When power consumption of 230VA

### Electrical

- Yanmar 12vDC Engine-mounted alternator
- Additional 24vDC Mastervolt 150Ah alternator for charging service batteries

### Shore Power

- 220v AC shore power with isolator and circuit breaker
- DC monitoring system

### Charging / Inverter:

- 2 x Victron Energy QUATTRO/5000 24/220v automatic battery charger and inverter
- 12v DC Victron Energy Phoenix 12 for engine and generator crank batteries

- Additional charger/inverter – emergency power supply. Emergency batteries are charged by alternator 12vDC alternator via converter

### Batteries (Battery Banks)

- 4 x Lithium Ion service batteries joined in parallel to provide 7.5Kw @ 24vDC. Battery nr. 5 can be added
- 12v DC engine start battery
- 12v DC generator start battery
- 24v DC bow thruster battery pack
- 2 x 200Ah. 12vDC Emergency batteries pack

## ANCILLARY EQUIPMENT

---

### Steering System

- Twin carbon fibre balanced rudders
- JP3 bearing system

### Keel System

- Lead bulb keel lifting vertically offering 2.5m shoal or 4m full draft
- Keel operated via electro-hydraulic pump system

### Hydraulic System

- H2Sail – Advanced Hydraulic adjustment system
- 2 x backstays (pistons in cruising configuration), vang, staysail cunningham, forestay cunningham, 2 x jib tweackers, main sail Cunningham, retractable hydraulic pistons and folding transom

- The whole system has a 5" touch screen interface in the chart plotter

### Bow Thruster

- 24v DC retractable bowthruster – SIDEPOWER SRV210

### Watermaker

- 2 x Schenker reverse osmosis watermaker producing 120 litres per hour each

### Bilge

- Bilge area divided into 6 compartments (bow, mast, central, engine room, garage and chart table) fitted with a 24vDC Gianneschi automatic electric bilge pumps directly connected to the batteries
- Manual bilge pump for main accommodation area, bilge and lazarette

### Boilers

- Quick 100 litre hot water tank, heated by engine or 220v AC immersion heater element

### Air Conditioning

- Webasto V50M BlueCool air conditioning system for all cabins, galley and dinette

# YACHT SPECIFICATIONS

## COMMUNICATION EQUIPMENT

---

### Cellular System

- ZG100 GPS Antenna

### VHF Radiotelephones

- B&G Radios VHF V60
- B&G VHF H60 Wireless Handset

### Telephone

- Satellite phone

## NAVIGATION EQUIPMENT

---

- B&G H5000 Hydra CPU
- B&G H5000 pilot computer
- 2 x B&G Zeus 3S 9" MFD colour GPS radar chartplotter at helm
- 1 x B&G Zeus 3S 12" MFD colour GPS radar chartplotter at the chart station
- Triton2 digital display

### Radar

- B&G closed-array radar scanner mast-mounted

### Automatic Pilot

- B&G autopilot with remote control

### AIS

- B&G AIS transceiver
- 1 x Multidisplay at chart table area
- 4 x Garmin GNX130 10' mast-mounted LCD displays

### Chart Plotter

- Marine PC system with LCD Monitor monitor at chart table area
- Steering compasses
- Victron Energy digital control & monitoring network

## DECK EQUIPMENT

---

### Rig

- Axxon carbon fibre spars – black painted
- Fractional keel-stepped mast with three-sets of swept-back spreaders
- Harken T26 switch-track with ball-bearing battencars for fully-battened mainsail
- Park Avenue style V-boom – racing light construction
- Navtec Nitronic 50 stainless steel rod standing rigging
- Rod backstay with split bridles mounted on hydraulic pistons for cruising configuration
- Runners for racing configuration allowing square top mainsail
- Carbon integral bowsprit
- Hydraulic adjustment for 2 x backstays (pistons in cruising configuration), vang, staysail cunningham, forestay cunningham, 2 x jib tweekers, main sail Cunningham, retractable hydraulic pistons and folding transom

- Antal electronic adjustable full-width mainsheet track in cockpit sole
- German mainsheet system
- Carbon structural bowsprit
- 2:1 halyards for mainsail and Code 0 mounted with Bamar hook
- The main halyard is with hook track with three reefs
- Facnor internal hook system for the staysail halyard
- Bamar hydraulic sub-deck jib furler
- Spinlock jammers
- Lazyjacks
- Mast led lights on each spreader
- P: 32.33m
- E: 10.78m
- J: 9.05m
- IG: 31.38m
- BAS: 2.05
- JIB area: 160 sqm
- MAIN area: 223 sqm
- Upwind sail area: 282 sqm

### Winches

- 3 x Harken 990 three speed self-tailing powered winches clockwise
- 3 x Harken 990 three speed self-tailing powered winches anti-clockwise
- 2 x Harken Performa 80 two speed self-tailing manual winches for the running backstays

# YACHT SPECIFICATIONS

## DECK EQUIPMENT cont...

---

### Sails

- Millennium Sails HARXE ocean taffeta black full batten cruising main sail;
- Millennium Sails HARXE racing full batten square top racing main sail;
- Millennium Sails HARXE heavy furling jib with vertical battens;
- Millennium Sails HARXE light – medium jib with horizontal battens;
- Millennium Sails HARXE staysail
- Millennium Sails speed staysail for gennaker;
- Millennium Sails A3 with snuffer;
- Millennium Sails cruise Code 0
- Millennium Sails A0
- One Ubi Major furler and antitorsion cable

### General

- Double lifelines
- Flush deckhead hatches
- Carbon folding passerelle
- Bathing ladder with electro hydraulic movement
- Quick windlass for recovery the tender
- Compressor for tender and fenders
- Salt water connection on the deck

### Anchoring & Mooring

- Harken retractable mooring winch on the bow
- Quick 3000 windlass
- 100m ø 12mm stainless steel anchor chain
- Anchor Delta

### Covers, Cushions & Canvas

- Deck and cockpit cushions
- Fenders & warps
- Sprayhood
- Boom awning
- Mainsail cover

### Tender and outboard engine

- Genius tender
- Outboard engine

## AUDIO/VISUAL ENTERTAINMENT SYSTEM

---

### Main Salon

- LCD TV in the salon
- Fusion RA770 Marine stereo

### Bridge Deck

- Hi-Fi with external speakers in the cockpit

## DOMESTIC EQUIPMENT

---

### Main Galley

- Technimpex stainless steel stove with 4 x gas burners and oven
- Induction burner
- Sink with pressurised fresh water supply
- Frigonautica 60Lt front opening freeze
- Frigonautica 60Lt front opening freeze
- Frigonautica fridge
- Cooling exchange salt water pumps
- Dishwasher Miele
- Miele electric microwave electric oven.
- Isotherm Webasto ice maker

### Laundry

- Washing machine Chandy AQUA 1042D1/2-S inside Workshop cabin

## OTHER EQUIPMENT

---

- Inside workshop cabin

# YACHT SPECIFICATIONS

## ACCOMMODATION

---

### Detailed accommodation

- Up to 6 berths in 3 double cabins plus 2 additional bunk beds
- Crew quarter aft with heads

### Heads

- Tecma 24v DC electric freshwater (or salt water) flush marine toilets
- Hot & cold pressurised water supplies with shower in heads

### Accommodation Finish

- All interior woodwork in white painted composite panelling or light wood
- Light wood flooring with floating panels
- Main bulkhead, hull innings with wood finish
- Heads finished in white
- White cloth upholstery
- Extensive use of diffused lighting
- Skyscreens for deckhead hatches

## NOTES & COMMENTS

---

Carbon fibre Maxi cruiser racer from Vismara Marine Concepts with variable draft keel, full cruising interior by Giacomo Facchini and rocket-ship performance.

### Further broker's comments:

MOMI is a full-carbon Maxi cruiser/racer from Vismara Marine Concepts. Launched in 2021, MOMI was conceived and built to compete at the very highest level whilst still allowing for easy family cruising. With a full cruising interior designed by Giacomo Facchini complete with three ensuite double cabins plus further crew quarters, and a telescopic keel bringing her draft from 4m to just 2.5m, MOMI is just as happy at anchor with family aboard as she is fully-crewed racing in the Maxi Worlds in Porto Cervo.

## SPECIFICATION HIGHLIGHTS

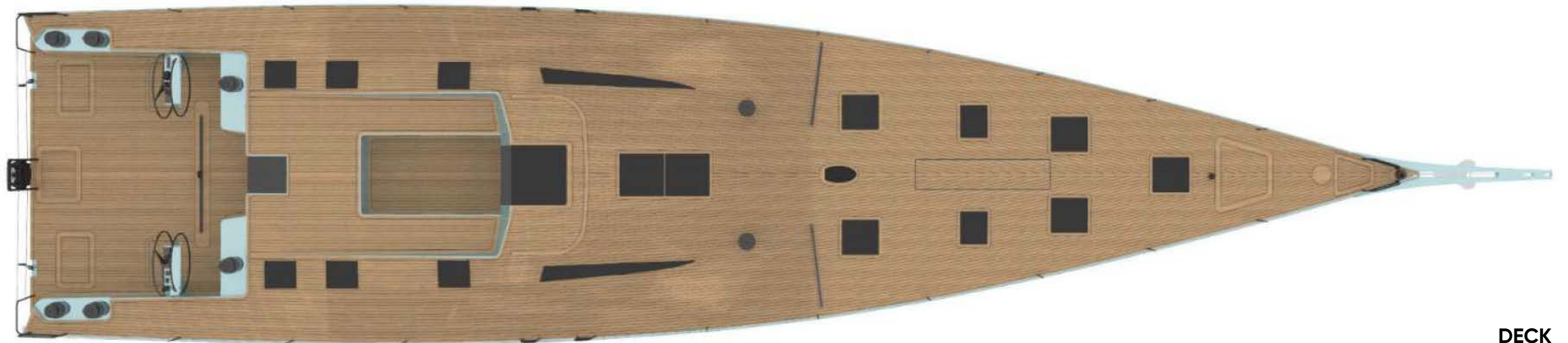
---

- 3 double guest cabins plus further bunk cabin with ensuite heads and crew quarter aft with separate heads
- Advanced composite construction

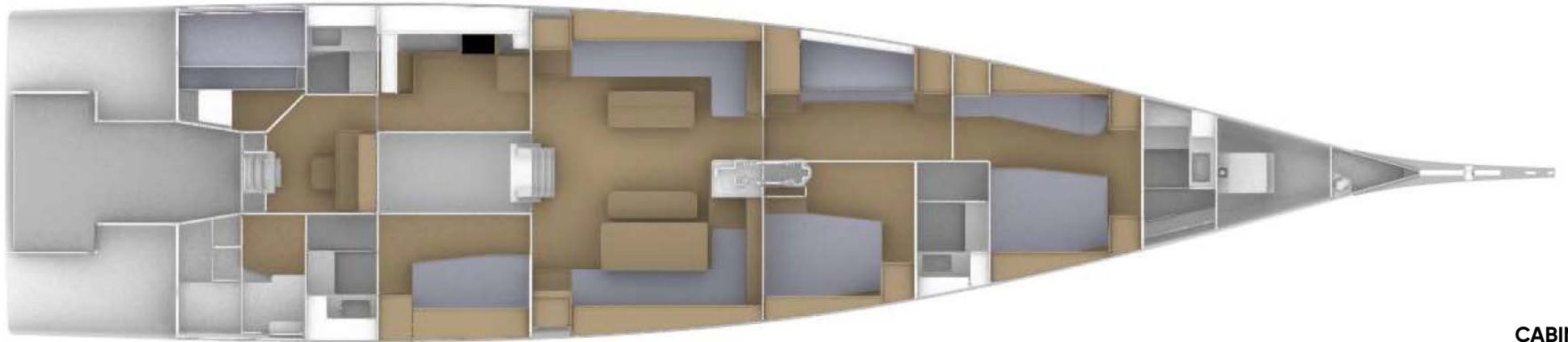
- Telescopic keel
- Twin rudders
- Axxon carbon fibre rig with mast jack
- Axxon carbon fibre V-boom
- Harken winch package with powered winches
- Lithium service batteries
- Generator
- Air conditioning
- Electro-hydraulic self-assisted deck manoeuvring
- JP3 steering system
- 2x Watermakers
- Full B&G H5000 instrument package with 3 x Zeus plotters
- Millennium racing sail wardrobe
- Millennium cruising sail wardrobe
- Cruising mode with swept backstays
- Tender garage for a tender up to 3.2m
- Drop-down bathing platform
- Quick PT1000 windlass for recovery the tender
- Compressor for tender and fenders
- Sails locker forward
- Carbon fibre bowsprit with recessed anchor
- Electric winches



# GENERAL ARRANGEMENT



DECK



CABINS



## CONTACT

+377 93 10 29 29  
[moraviayachting.mc](http://moraviayachting.mc)

While every effort has been made to ensure that the information contained in this document is accurate as at the date of production, the accuracy of such information cannot be guaranteed. Moravia Yachting gives no representation, warranty or undertaking, express or implied, as to: the accuracy, reliability, completeness or reasonableness of the information contained in this document; the condition of a featured yacht and/or its equipment; the seaworthiness of a featured yacht; or the suitability and/or availability of a featured yacht for purchase or charter. The fees, specifications, figures, images and comments included in this document are subject to change without notice. This document has been produced by Moravia Yachting at the request of the person identified on the front cover for discussion purposes only and is confidential. This document must not be copied or distributed to any third party, in whole or part, without Moravia Yachting's express written permission. Moravia Yachting hereby expressly excludes any liability howsoever arising in respect of any inaccuracies or errors in the information contained in this document, to the fullest extent permitted by law.

 A Hill Robinson company

  
**Moravia**  
YACHTING