



ORIGAMI

Builder	Astilleros Armon, S.A.
Year/Refit	2027
LOA	65m (213' 3")
Beam	12.1m (39' 7")
Speed	21/16 Knots
Price	€48,000,000

ABOUT THE DESIGNER

The 65m ORIGAMI has been designed by the Barcelona based studio, Schwalgien Yacht Design, and comes hot on the heels of their award-winning design of the 68m NEBULA support yacht.

The studio has extensive experience in various yacht design fields, including the exterior & interior design of superyachts, explorer yachts, and highly customized superyacht tenders.

Their international portfolio spans over 18 years of yacht design but over the past 5 years, the studio has successfully found their niche in the design of shadow vessels, both mono and duo hulls, where their current expertise is practically unrivalled within the industry. The studio has won a string of prestigious design awards – including the World Superyacht Award, Boat International Design & Innovation Award, MUSE Design Award (New York) and the German Design Award.

German founder Kirsten Schwalgien is an advocate for best design practices across the globe, and has earned international recognition by consistently combining precision and analytical thinking. She teaches transportation design at IED Design University/ Barcelona and holds the position of a judge on the panel for WIN Design Awards (London).



ABOUT THE SHIPYARD

The Astilleros Armon Shipyard is part of the Armon group, which has seven shipbuilding locations.

Astilleros Armon occupies a 34,000-square area with three separate slipways, measuring 71, 97 and 124 metres respectively, along with a 300-metre outfitting quay.

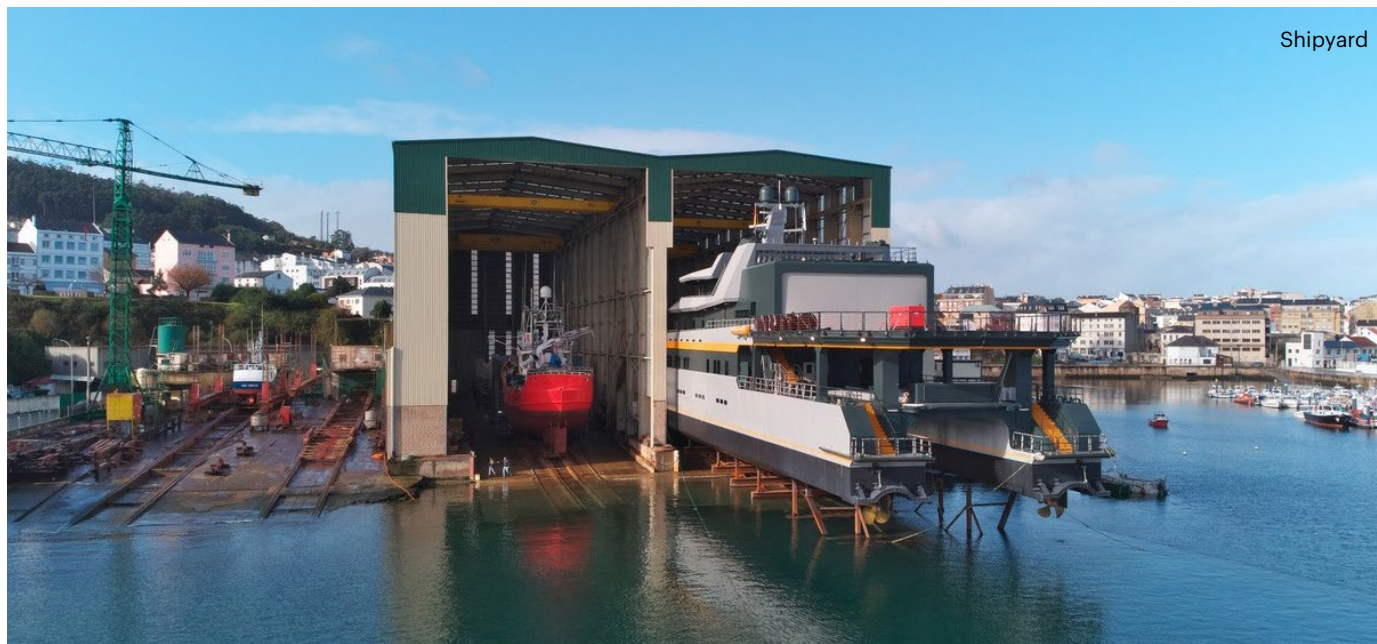
It is equipped with all the necessary production facilities; cranes, auto-cranes, an on-site carpentry and electrical workshop, machine shops, oxy-cutting facilities and more.

It has achieved the ISO-9001 quality assurance standard and Environmental Guarantee ISO-14001.

Recent launches from this Spanish yard include 68m Nebula (support yacht to Feadship's 99.95m Moonrise), 68m Wayfinder (support yacht to a superyacht) and 66.2m Hodor.

Established in 1963, the Armon group of shipyards is now responsible for superyacht support vessel and shadow yacht builds, fast speed vessels, ferries, and ocean survey/research vessels.

ARMON has an enormous logistical capacity for technical support, after-sales and repair. They offer a complete operational management service for rapid international transportation of parts and equipment, and supports repair works such as modifications, installations, interior modernisation, equipment upgrades and hull paints.



Shipyard



Example Finishes

Example Finishes



RENDER





RENDER





RENDER





RENDER





RENDER



YACHT SPECIFICATIONS

MAIN SPECIFICATIONS

Flag	Cayman Islands
Length	65m
Beam	12.1m
Year Built/Refit	2027
Hull Number	Pr 203-23
Builder	Astilleros Armon, S.A.
Naval Architect	Kirsten Schwalgien Yacht Design
Interior Design	Kirsten Schwalgien Yacht Design
Exterior Design	Kirsten Schwalgien Yacht Design
Hull Construction	Naval A Marine quality steel
Superstructure	Aluminium 5083 for plates and 6082 for extrusions
Classification	Lloyd's register
Crew	22
Price	€48,000,000

MACHINERY

Main Engines	2 x Main engines MTU model 16V4000 M73L of 2.832 kW each at 2.050 r.p.m. with electric starting and heat exchanger refrigeration. 2 x MTU SCR to comply with IMO TIER III regulation
Gearboxes	2 x ZF 9355 NR gearboxes (Ratio of 5.185) with a vertical step and a trailing pump.

Propellers	2 x Controllable Pitch Propellers, 4 x blades and Ø2050 mm made of NiAlBz
Bow Thruster	1 x Schottel electric driven bow thruster of 300 kW
Rudders	2 x Twisted high Speed Rudders made of Stainless Steel
Speeds	Maximum speed: 21 Knots Cruising speed: 16 Knots

AUXILIARY MACHINERY & ELECTRICAL SYSTEM

Main Generators	2 x Generators sets type Scania model D113 091M of 426 kW at 1.500 r.p.m., and Leroy Sommer or Stamford alternator of 360 kW – 450 kVA, 440 V – 50 Hz.
Electric Power	Power network: 440 V / 230 V – 50 Hz and shore connection with Grid Converters
Compressors	2 x Service air compressors ATLAS COPCO working at 7-8 bars
Ventilation	6 x Engine room fans type WOODS or equivalent of approx. 7.500 m ³ /h each

TANK CAPACITIES

Fuel Capacity	200,000 litres
Jet Fuel	7,000 litres
Urea	15,000 litres
Drinking Water	10,000 litres
Technical Water	10,000 litres
Water Capacity	20,000 litres
Clean Lub Oil	4,000 litres
Waste Lub Oil	2,000 litres
Sludge	3,000 litres
Grey Water	18,200 litres
Black Water	11,400 litres

ANCILLARY EQUIPMENT

Fuel/Oil/Water separator	Fuel oil purifier ALFALAVAL type MAB 103 or similar, of 1.400 l./h
Bilge/Fire and service Pump	General services & firefighting, Bilge, MDO Transfer, Oil transfer, FW transfer, Fresh water hydrophore set, Sea water hydrophore set, Dirty oil

YACHT SPECIFICATIONS

SAFETY & SECURITY EQUIPMENT

- Fire detection system with smoke and temperature detectors and push buttons, Marinelec, Praxis or equivalent
- Alarm, Monitoring & Control System PRAXIS or equivalent.
- Unclassified Dynamic Positioning System (DPO) Praxis or equivalent
- 2 x Life rafts of suitable capacity (50 persons)
- SOLAS Rescue boat (Owner supplied)
- Watermist Fire-Fighting system with total flooding for engine room space.
- 3 x Pilot chair, type NORSAP 1500 or similar
- Accommodation lighting: LED type
- Fresh water treatment plant
- Sewage treatment plant FMD or equivalent: (Grease Trap, Dewatering Units, Sewage Treatment Plant)
- Waste Disposal plant FMD or equivalent (Waste convertor, glass crusher)
- Paint: Hempel, International or Jotun

NAVIGATION EQUIPMENT

- Navigation aids (in compliance with GMDSS Radio Area A2)
 - Magnetic standard reflector compass, type Cassens & Plath or similar
 - Satellite compass connected to both autopilot and plotter devices, type FURUNO SC-130 or similar
- GPS Navigator/Plotter/Display** type FURUNO GP170 DGPS or similar
- Automatic Pilot** Sperry Navipilot 4000 or similar

Radar "X" band, type Raytheon NautoScan NX 25, 8 ft or similar

Radar "S" band, type Raytheon NautoScan NX 30, 12 ft or similar

Echo Sounder Navigational echo-sounder, type Furuno

FE-800 or similar

Log Speed log FURUNO DS-80 or similar.

Chart Plotter Transas, FURUNO or Raytheon ECDIS

Wind Instruments B&G H5000 or similar

Bridge Alarm

- BNWAS system FURUNO BR-500 or equivalent.
- 6 x 26" Hatteland displays
- Carlisle & Finch Searchlights
- 1 x Forward Looking Sonar
- Air horn Zollner or similar
- Bell, clock and barometer CCTV optical surveillance system on deck and engine room areas with screen display monitor in wheelhouse

EXTERNAL COMMUNICATION

- 3 x VHF/DSC radiotelephones, type FURUNO FM8900S or similar
- SSB MF/HF radiotelephone with integrated watch receiver, type FURUNO FS-1575 of 150 W, or similar
- 2 x FURUNO Felco-18 Inmarsat C Systems
- GMDSS Alarm Panel FURUNO I-350 or equivalent
- Airband VHF Radio, Icom ICA120 or similar
- Radio receiver AM/FM with CD player and loudspeakers in wheelhouse and cabins
- Navtex receiver type FURUNO NX-700A or similar

- AIS type FURUNO FA-170 or similar.
- 4 x SART Jotron SART20.
- 4 x GMDSS Handheld radios Jotron TR-30
- 1 x Jotron Tron 60GPS Float-Free EPIRB
- 1 x Jotron Tron 60GPS Manual EPIRB
- Battery pack and charger for the equipment, type VICTRON or similar
- Complete set of antennas

INTERNAL COMMUNICATION

- Intercom system for wheelhouse, engine room and open deck, type VINGTOR ZENITEL ETB-5 or similar
- PABX Zenbitel ACM-48-V10
- 3 x Desk/Wall master stations
- 29 x Crew cabin & public areas
- 1 x Galley
- 4 x Engine and Rudder Rooms

EQUIPMENT HANDLING DEVICES

- 2 x Ferri Beam Cranes, LARS, with a combined lifting capacity of 9 ton
- 1 x Small Davit for Jet Skis, SWL 500 kg
- 1 x Atlas Davit for General handling purposes, SWL 500 kg

YACHT SPECIFICATIONS

DECK EQUIPMENT

- 2 x Vertical windlasses series 3009, stainless steel (AISI 316) finished
- 2 x Vertical Capstans series 3402, stainless steel (AISI 316) finished
- 2 x Guide roller, Chain Stopper and Mooring Bitt, stainless steel (AISI 316)
- 10 x Bollards and fairleads for mooring the vessel

HELICOPTER FACILITIES

- 1 x Helicopter landing area in the aftwards fully certified
- 1 x Helicopter hangar to store an AB H135.
- 1 x Helicopter workshop
- 1 x Detegasa Refuelling system

OTHER EQUIPMENT

- Watermist FireFighting system with total flooding for engine room space
- 3 x Pilot chair, type NORSAP 1500 or similar.
- Accommodation lighting: LED type.
- Fresh water treatment plant.
- Sewage treatment plant FMD or equivalent: (Grease Trap, Dewatering Units, Sewage Treatment Plant)
- Waste Disposal plant FMD or equivalent (Waste convertor, glass crusher).
- Paint: Hempel, International or Jotun

AIR CONDITIONING

Armon will be in charge of the design of the vessel's

Air Conditioning, heating, and ventilation plant.

The HVAC system of the vessel will comprise the following:

- 1 x Chiller plant formed by 3 Turbocor compressors of 50% of the total capacity each
- 1 x Air handling Unit for main deck accommodation
- 1 x Air handling Unit for Upper deck and wheelhouse deck accommodation
- 1 x Air handling Unit for the Hangar
- Fancoil Units for HVAC below main deck

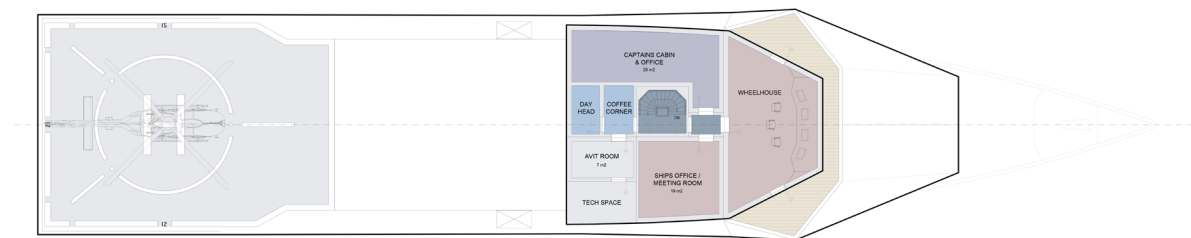
ACCOMODATION

- 1 x captain's cabin and office
- 12 x Crew cabins with en-suite, chair, locker, and window
- 3 x single berth
- 9 x twin berths
- 1 x Galley fully equipped

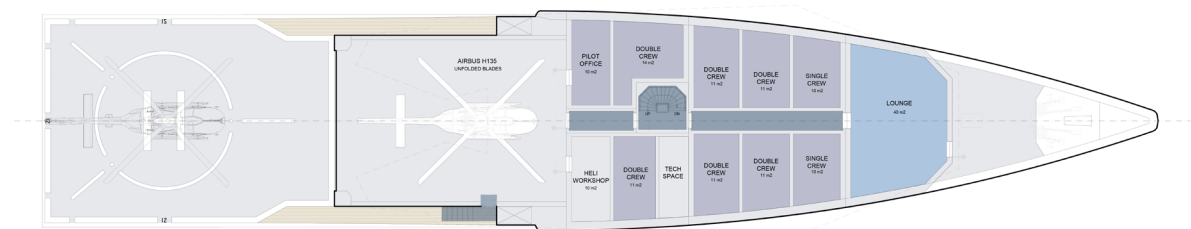
STORAGE AREAS

- Dry store 11 Sq metres
- Freezer store 5 Sq metres
- Fridge store
- 1 x Crew Mess
- 1 x Store / Office space
- 1 x Gym
- 1 x Deck workshop
- 1 x Deck equipment store
- 1 x Medical Room
- 1 x Ships office
- 3 x Racks storage areas (for AVIT and Vessel Network)

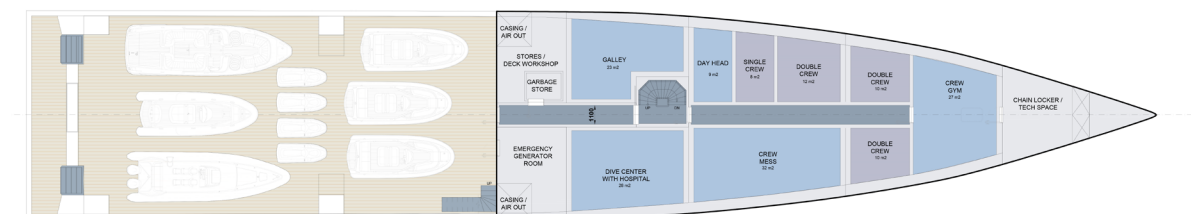
GENERAL ARRANGEMENT



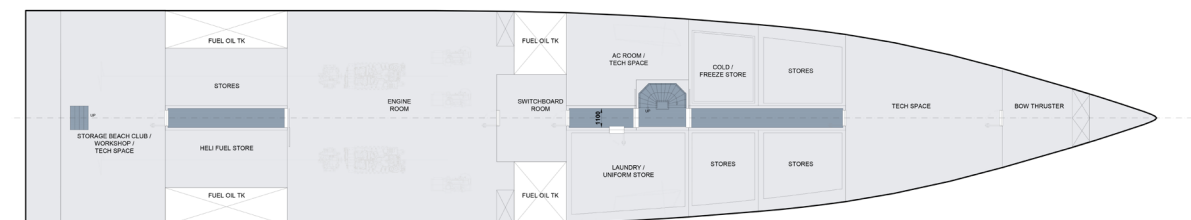
BRIDGE DECK



MAIN DECK



UPPER DECK



LOWER DECK

These particulars have been prepared from information provided by the sellers and are intended as a general guide to the vessel. We cannot, however, be liable for any inaccuracy. It is up to the purchaser to confirm details of concern to him by survey, inspection and/or enquiry of the seller and to ensure that the purchase contract properly reflects his concern and specific details upon which he may rely. We always advise an independent survey.

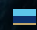
CONTACT

Tim Carbury
Sales Broker

+377 643 912 570
tim.carbury@moraviayachting.mc
moraviayachting.mc



While every effort has been made to ensure that the information contained in this document is accurate as at the date of production, the accuracy of such information cannot be guaranteed. Moravia Yachting gives no representation, warranty or undertaking, express or implied, as to: the accuracy, reliability, completeness or reasonableness of the information contained in this document; the condition of a featured yacht and/or its equipment; the seaworthiness of a featured yacht; or the suitability and/or availability of a featured yacht for purchase or charter. The fees, specifications, figures, images and comments included in this document are subject to change without notice. This document has been produced by Moravia Yachting at the request of the person identified on the front cover for discussion purposes only and is confidential. This document must not be copied or distributed to any third party, in whole or part, without Moravia Yachting's express written permission. Moravia Yachting hereby expressly excludes any liability howsoever arising in respect of any inaccuracies or errors in the information contained in this document, to the fullest extent permitted by law.

 A Hill Robinson company


Moravia
YACHTING