

# TAWERA

Builder	Alloy Yachts
Year/Refit	1995/2017
LOA	29m (95' 1")
Beam	6.3m (20' 8")
Draft	3.2m (10' 5")
Cabins	3
Guests	6
Maximum Speed	10 Knots
Cruising Speed	9 Knots
Price	€1,500,000



SALON





SALON





SALON





SALON





LOUNGE



DINING





DINING







DINING





DINING



MASTER BEDROOM





MASTER BEDROOM



MASTER BATHROOM





MASTER BATHROOM





DOUBLE BEDROOM





DOUBLE BATHROOM







TWIN BEDROOM





BRIDGE





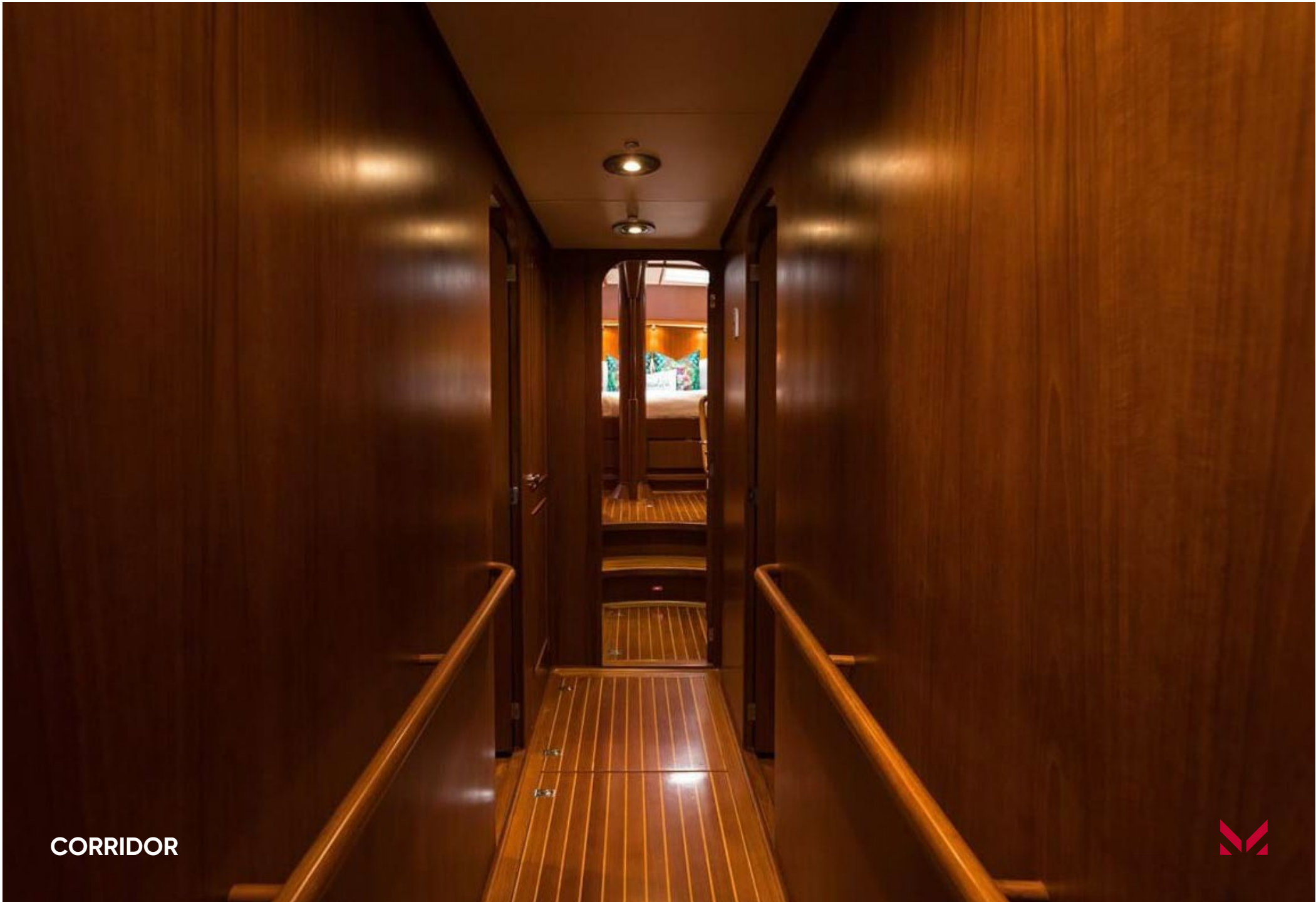
GALLEY





GALLEY





CORRIDOR





DECK









# YACHT SPECIFICATIONS

## DIMENSIONS

---

<b>Length</b>	29m (95' 1")
<b>Beam</b>	6.3m (20' 8")
<b>Draft</b>	3.2m (10' 5")

## GENERAL

---

<b>Year</b>	1995/2017
<b>Builder</b>	Alloy Yachts
<b>Naval Architect</b>	Ron Holland Design
<b>Exterior Design</b>	Ron Holland Design
<b>Interior Design Hull</b>	Peter Sijm
<b>Construction Hull</b>	Full Displacement
<b>Material</b>	Aluminium
<b>Superstructure</b>	Aluminium

## ACCOMMODATION

---

<b>Number of Cabins</b>	3 (1 Master, 2 Twin)
<b>Total Guests Total</b>	6
<b>Crew</b>	4

## CERTIFICATIONS

---

<b>Flag</b>	Cook Islands
<b>Location</b>	Bodrum, Turkey
<b>Classification</b>	Lloyd's

## TECHNICAL INFORMATION

---

<b>Engines Engine</b>	1 x MTU 8V183AA91
<b>Power Main</b>	235 hp
<b>Generators</b>	1 x Northern Lights 30 kVA 1 x Northern Lights 20 kVA
<b>Propulsion Fuel</b>	Single Screw Propeller
<b>Capacity Water</b>	7,500 litres
<b>Capacity</b>	3,200 litres
<b>Range at cruising speed</b>	2,500 NM @ 9 Knots
<b>Maximum Speed</b>	10 Knots
<b>Cruising Speed</b>	9 Knots
<b>Gross Tonnage</b>	77

## SAILS & RIGGING

---

<b>Rigging type</b>	Ketch
---------------------	-------

## WORK LIST/REFIT

---

### 2024

- Main engine rebuild
- New airconditioning unit
- New inverter

## PRICE

---

**€1,500,000**


These particulars have been prepared from information provided by the sellers and are intended as a general guide to the vessel. We cannot, however, be liable for any inaccuracy. It is up to the purchaser to confirm details of concern to him by survey, inspection and/or enquiry of the seller and to ensure that the purchase contract properly reflects his concern and specific details upon which he may rely. We always advise an independent survey.

# CONTACT

**Adam Papadakis**  
Head of Sales / Sales Broker

+377 6 78 63 39 60  
adam.papadakis@moraviayachting.mc  
moraviayachting.mc

While every effort has been made to ensure that the information contained in this document is accurate as at the date of production, the accuracy of such information cannot be guaranteed. Moravia Yachting gives no representation, warranty or undertaking, express or implied, as to: the accuracy, reliability, completeness or reasonableness of the information contained in this document; the condition of a featured yacht and/or its equipment; the seaworthiness of a featured yacht; or the suitability and/or availability of a featured yacht for purchase or charter. The fees, specifications, figures, images and comments included in this document are subject to change without notice. This document has been produced by Moravia Yachting at the request of the person identified on the front cover for discussion purposes only and is confidential. This document must not be copied or distributed to any third party, in whole or part, without Moravia Yachting's express written permission. Moravia Yachting hereby expressly excludes any liability howsoever arising in respect of any inaccuracies or errors in the information contained in this document, to the fullest extent permitted by law.

 A Hill Robinson company

  
**Moravia**  
YACHTING