

T57

RIVA ARGO 90

Builder	Riva
Year	2019
LOA	28.49m (93' 5")
Beam	6.5m (21' 4")
Draft	2.15m (7' 1")
Cabins	4
Guests	8
Cruising Speed	20 Knots
Maximum Speed	26 Knots
Price	€6,700,000 Exc. VAT







MAIN SALON





MAIN SALON





MAIN SALON - DINING





MASTER STATEROOM





MASTER STATEROOM





MASTER STATEROOM





MASTER STATEROOM





MASTER STATEROOM





MASTER STATEROOM - EN SUITE





MASTER STATEROOM - EN SUITE





VIP DOUBLE STATEROOM





VIP DOUBLE STATEROOM





VIP DOUBLE STATEROOM - EN SUITE





VIP DOUBLE STATEROOM - EN SUITE





GUEST DOUBLE STATEROOM





TWIN GUEST STATEROOM





AFT DECK





AFT DECK





UPPER DECK - DINING





FLYBRIDGE







FLYBRIDGE





FLYBRIDGE





FLYBRIDGE - BAR





BRIDGE





SUN DECK





SUN DECK





SUN DECK - AERIAL VIEW





FORWARD DECK LOUNGE





GALLEY





ENGINE ROOM





YACHT SPECIFICATIONS

MAIN SPECIFICATIONS

Length	28.49m
Beam	6.5m
Draft	2.15m
Gross Tonnage	110.1
Displacement	full 98,000 kg / empty 85,000 kg
Year Built	2019
Builder	Riva
Naval Architect	Ferretti Group Engineering
Interior Designer	Officina Italiana Design
Exterior Designer	Officina Italiana Design
Hull Construction	GRP
Superstructure	GRP
Paint system	Carbon
Classification	CE
Flag	Cayman Island
Port of Registry	George Town Cayman Island
Price	€6,700,000 Vat excl.

ACCOMMODATION

Number of Cabins	4
Total Guests	8
Total Crew	4

MACHINERY

Main Engine	2x MTU 12V 2000
Manufacturer	MTU
Total port engine hours	1522
Total stb. Engine hours:	1544
Maximum speed	26 Knots
Cruising speed	20 Knots
Range	300 nm
Main Generator	2 cummins
Generator hours port:	9677
Generator hours stb. :	7811

AUXILIARY MACHINERY & ELECTRICAL SYSTEM

Electric Power	2 Gen 28kw
Electrical System	Asea Converter 24/230
Shore Power	3 Phases 64 AMPs
Batteries	7 batteries (1: 2019, 4: 2022, 2: 2023)

SAFETY & SECURITY EQUIPMENT

Safety	As per flag requirements
Medical	As per flag requirements
Fire	As per flag requirements
Alarms & Monitoring	As per flag requirements
Security	As per flag requirements

TANK CAPACITIES (approximate)

Fuel capacity	8700 L
Fuel Consumption	2100 RPM= 560 L/H, 2400 RPM= 770 L/H
Water Capacity	1320 lt
Grey Water	535 L
Black Water	535 L

ANCILLARY EQUIPMENT

Steering System	Side Power, BCS twin disk, Hydraulic
Bow Thruster	Side Power, Parker, Hydraulic
Stern Thruster	Side Power, Rexroth, Hydraulic
Stabilisers	Side Power Fins and 2 Gyro Sea keeper, SK 16000 and SK 9000, Hydraulic
Bilge/Fire Pump	Gianneschi
Boilers	2 50000L each, Ariston
Air Conditioning	3 compressors Condaria/ Dometic 180,000btu/h, 18 units (Fan coil)

COMMUNICATION EQUIPMENT

Satcom	2 Iridium
Cellular System	Vsat/ Kymeta / 4G Antennas
VHF Radio	Icom
Telephone	Jacob Jensen



YACHT SPECIFICATIONS

NAVIGATION EQUIPMENT

Magnetic Compass	Urania
Automatic Pilot	Simrad NACS2/NAC3 AP44
Log	Airmar IDST 810
Echo Sounder	Airmar
Radar	Simrad XBand
Chart Plotter	Simrad
GPS	Simrad 500
Wind Instruments	NAVICO NMEA 2000
AIS	NAIS 500 Class B

AUDIO/ VISUAL ENTERTAINMENT SYSTEM

- Main Salon: Samsung Series 8, Yamaha (RXV 685, RXA880) Stereo System with Sub (Bowers & Wilkins ASW608), Apple TV
- Bridge Deck: 2 Speakers SONANCE VPXT65
- Lounge: 2 Speakers SONANCE VPXT6R
- Sun Deck: 2 Speakers SONANCE VPXT6R
- Owners Cabin: Samsung Series 8, Yamaha RXV 685, RXA880 Stereo System, Apple TV
- Guest Cabin: Samsung Series 8, Yamaha RXV 685, RXA880 Stereo System, Apple TV
- Crew Cabin: Fusion MSUD/AV755
- Crew-mess: LG 24MT 49S TV, Fusion MSUD/AV755, MSRA 70

DOMESTIC EQUIPMENT

Bridge Deck

- Mini fridge (Isotherm)
- Ice Marker Isotherm (Vitrifrigo)
- Barbecue (Electric)

Crew Mess

- Mini fridge (Vitrifrigo)
- Cooking top
- Extractor
- Washing machine Boss
- Microwave Samsung

Main Galley

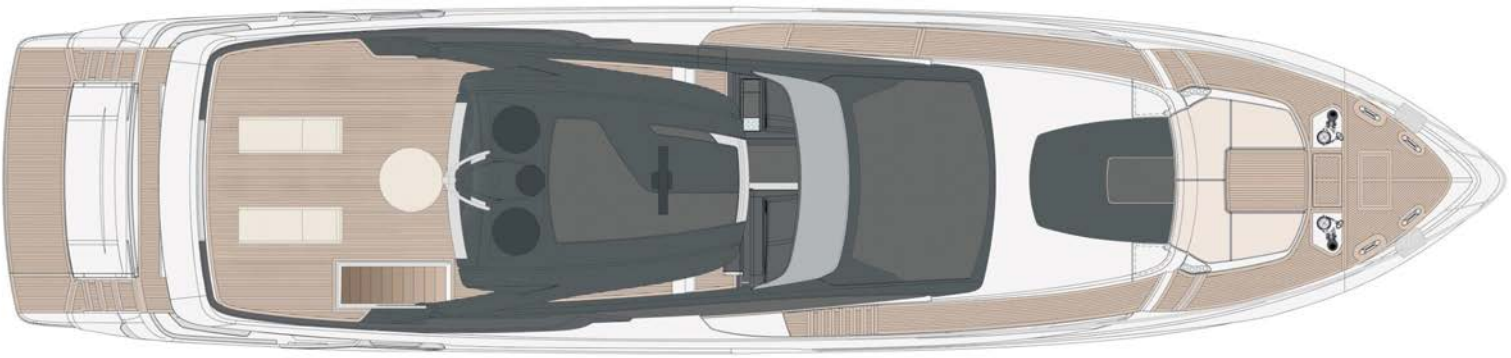
- Oven
- Cooking top
- Dishwasher (Miele)
- Extractor Smeg
- Fridge Samsung

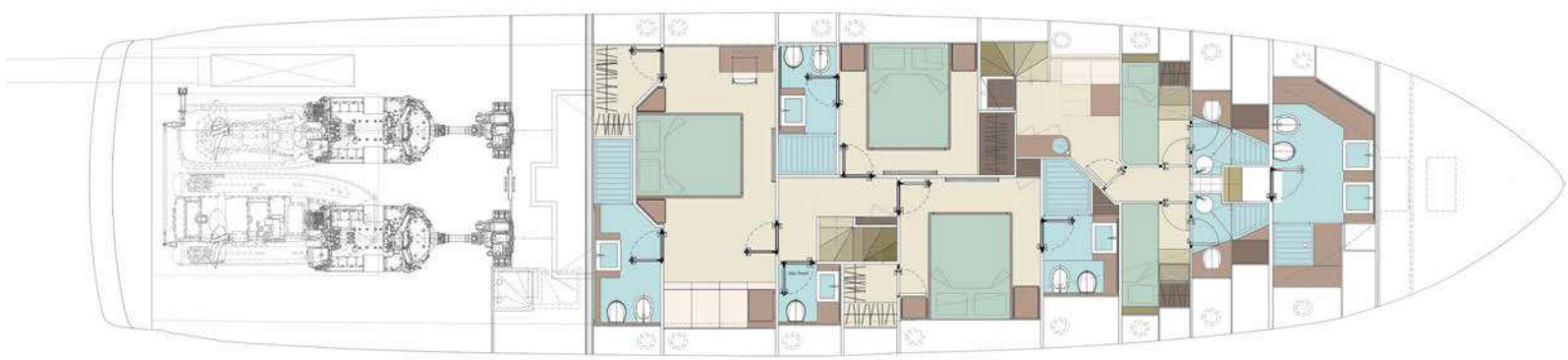
TENDERS & WATER TOYS EQUIPMENT

Tenders Williams Sport Get 395 with 55 hours

Toys Googles and Fins, noodles, Paddleboard, Ring, Inflatable 2-seater Kayak, Booties, Water Sport Jackets.







CONTACT

Alessandro Diomedì
Sales Broker

+377 6 43 91 90 54

alessandro.diomedì@moraviayachting.mc
moraviayachting.mc



While every effort has been made to ensure that the information contained in this document is accurate as at the date of production, the accuracy of such information cannot be guaranteed. Moravia Yachting gives no representation, warranty or undertaking, express or implied, as to: the accuracy, reliability, completeness or reasonableness of the information contained in this document; the condition of a featured yacht and/or its equipment; the seaworthiness of a featured yacht; or the suitability and/or availability of a featured yacht for purchase or charter. The fees, specifications, figures, images and comments included in this document are subject to change without notice. This document has been produced by Moravia Yachting at the request of the person identified on the front cover for discussion purposes only and is confidential. This document must not be copied or distributed to any third party, in whole or part, without Moravia Yachting's express written permission. Moravia Yachting hereby expressly excludes any liability howsoever arising in respect of any inaccuracies or errors in the information contained in this document, to the fullest extent permitted by law.

 A Hill Robinson company


Moravia
YACHTING