



PROJECT ZEPHYR

Builder	Dörries Yachts
LOA	115.8m (379' 11")
Beam	17.5m (57' 5")
Draft	4.9m (14' 1")
Cabins	7
Guests	14
Cruising Speed	16 knots
Maximum Speed	18 knots
Price	POA







































YACHT SPECIFICATIONS

MAIN SPECIFICATIONS

Length	115.8m (379' 11")
Beam	17.5m (57' 5")
Draft	4.9m (14' 1")
Gross Tonnage	5,750
Delivery	54 months
Builder	Dörries Yachts
Naval Architect	Dörries Yachts
Interior Designer	H2 Yacht Design
Exterior Designer	H2 Yacht Design
Hull Construction	Marine Grade Steel
Hull form	Displacement Monohull
Flag	Cayman Islands
Classification	Lloyd's EMEA – MCA PYC
Construction site	Bremerhaven, Germany

ACCOMMODATION

Guest Cabins	7
Guest Berths	14
Arrangement	1x Owner suite, 2x VIP suites, 4x Guest staterooms.
Crew cabins	22
Crew berths	36
Arrangement	1x captain's cabin, 5x cabins on main deck, 16x cabins on lower deck.

MACHINERY

- **Propulsion**
2x Azipod TVP D01100P-S1600
- **Diesel Generator Sets**
2x MTU 12V 4000 M35S units, 1,920 bkW each
2x MTU 8V 4000 M23S units, 920 bkW each
- **Emergency Diesel Generator Set**
1x CAT C9 ACERT with SCR/DPF, 240 kW

Maximum speed	18 knots
Cruising speed	16 knots
Range	6,000nm @12knots

SAFETY & SECURITY EQUIPMENT

- **Surveillance & Security**
CCTV System, Stabilised Infrared Camera,
Tender tracking system
- **Fire Safety**
KJ FireOff® Water Mist System, firefighting
equipment, vessel alarm system

TANK CAPACITIES

Fuel Capacity	380,000 L
Water Capacity	75,000 L
Black/Grey Water	100,000 L

ANCILLARY EQUIPMENT

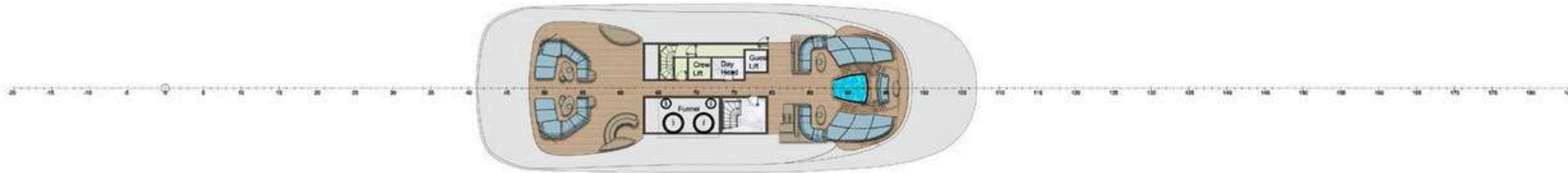
Bow Thruster	JASTRAM bow thruster
Stabilisers	SKF - Zero-Speed
Fresh-water maker	RWO VEOLIA
Air Conditioning	MÖHRING Marine System

DECK EQUIPMENT

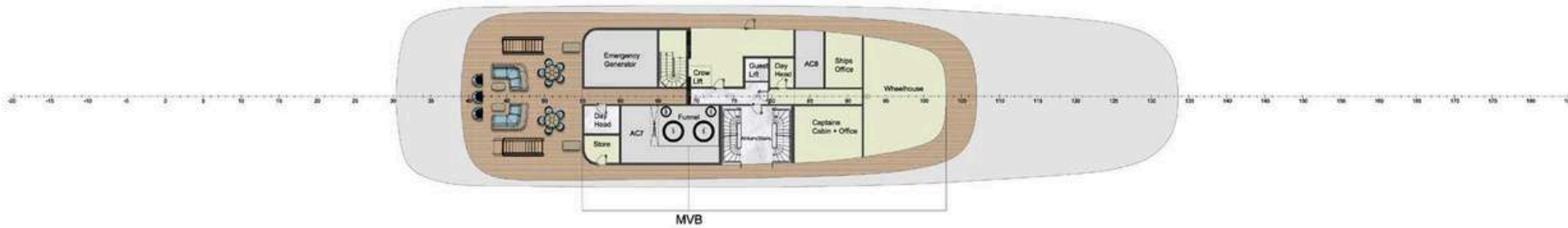
Anchors	2x Pool-type galvanised steel anchors
Capstans	4x Steen warping capstans
Windlasses	2x Steen anchor windlasses
Crane & Davits	4x Fuchs overhead cranes
Swim platform	OPACMARE stern transformer platform
Spa/Jacuzzi	1x on the sun deck forward 1x on the upper deck forward
Pool	Main deck aft – 7.6m × 4m × 1m
Other	Elevator servicing Lower, Main, Upper and Bridge Decks



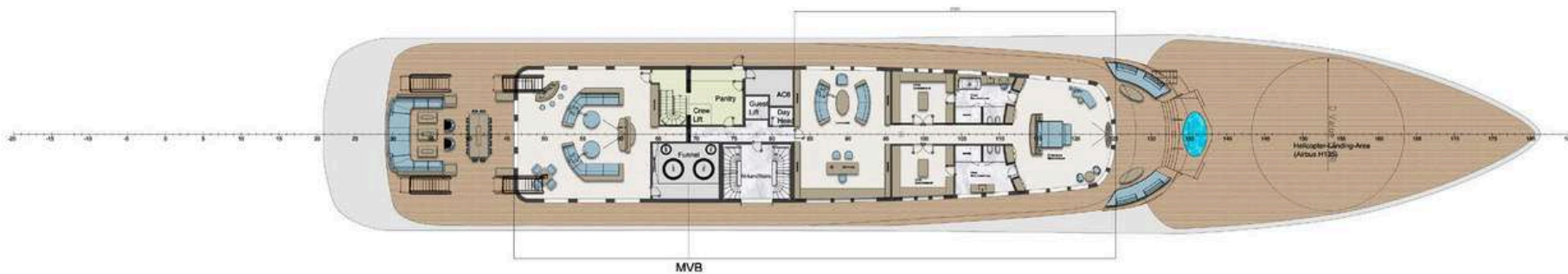
GENERAL ARRANGEMENT



Sun Deck "SD"
20,040 mm a.B.L.
Deck height: tbd
Clear deck height:
tbd



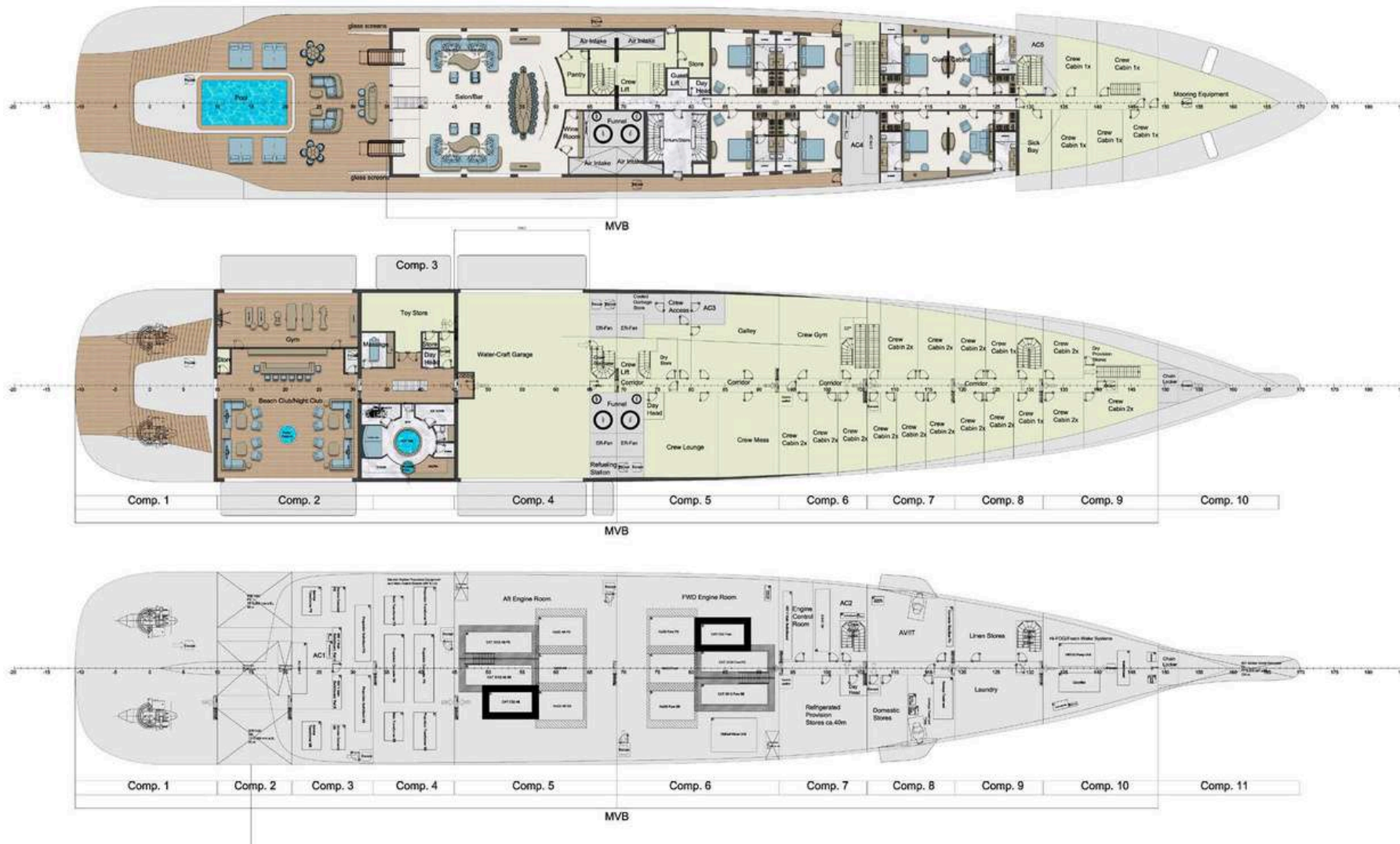
Bridge Deck
"BD"
16,620 mm a.B.L.
Deck height: 3,420
mm
Clear deck height:
tbd



Upper Deck "UD"
13,200 mm a.B.L.
Deck height: 3,420
mm
Clear deck height: tbd



GENERAL ARRANGEMENT



Main Deck "MD"
 9,600 mm a.BL.
 Deck height: 3,600 mm
 Clear deck height: tbd

Lower Deck "LD"
 6,000 mm a.BL.
 Deck height: 3,600 mm
 Clear deck height: tbd

Mezzanine Deck "MeD"
 2,580 mm a.BL.
 Deck height: 3,420 mm
 Clear deck height: tbd



CONTACT

Virginia Di Antonio
Sales Broker

+377 37 70 21 10

virginia.diantonio@moraviayachting.mc



While every effort has been made to ensure that the information contained in this document is accurate as at the date of production, the accuracy of such information cannot be guaranteed. Moravia Yachting gives no representation, warranty or undertaking, express or implied, as to: the accuracy, reliability, completeness or reasonableness of the information contained in this document; the condition of a featured yacht and/or its equipment; the seaworthiness of a featured yacht; or the suitability and/or availability of a featured yacht for purchase or charter. The fees, specifications, figures, images and comments included in this document are subject to change without notice. This document has been produced by Moravia Yachting at the request of the person identified on the front cover for discussion purposes only and is confidential. This document must not be copied or distributed to any third party, in whole or part, without Moravia Yachting's express written permission. Moravia Yachting hereby expressly excludes any liability howsoever arising in respect of any inaccuracies or errors in the information contained in this document, to the fullest extent permitted by law.

 A Hill Robinson company


Moravia
YACHTING