



# PROJECT ZEPHYR

Builder	Dörries Yachts
LOA	115.8m (379' 11")
Beam	17.5m (57' 5")
Draft	4.9m (14' 1")
Cabins	7
Guests	14
Cruising Speed	16 knots
Maximum Speed	18 knots
Price	POA





































































# YACHT SPECIFICATIONS

## MAIN SPECIFICATIONS

<b>Length</b>	115.8m (379' 11")
<b>Beam</b>	17.5m (57' 5")
<b>Draft</b>	4.9m (14' 1")
<b>Gross Tonnage</b>	5,750
<b>Delivery</b>	54 months
<b>Builder</b>	Dörries Yachts
<b>Naval Architect</b>	Dörries Yachts
<b>Interior Designer</b>	H2 Yacht Design
<b>Exterior Designer</b>	H2 Yacht Design
<b>Hull Construction</b>	Marine Grade Steel
<b>Hull form</b>	Displacement Monohull
<b>Flag</b>	Cayman Islands
<b>Classification</b>	Lloyd's EMEA – MCA PYC
<b>Construction site</b>	Bremerhaven, Germany

## ACCOMMODATION

<b>Guest Cabins</b>	7
<b>Guest Berths</b>	14
<b>Arrangement</b>	1x Owner suite, 2x VIP suites, 4x Guest staterooms.
<b>Crew cabins</b>	22
<b>Crew berths</b>	36
<b>Arrangement</b>	1x captain's cabin, 5x cabins on main deck, 16x cabins on lower deck.

## MACHINERY

- **Propulsion**  
2x Azipod TVP D01100P-S1600
- **Diesel Generator Sets**  
2x MTU 12V 4000 M35S units, 1,920 bkW each  
2x MTU 8V 4000 M23S units, 920 bkW each
- **Emergency Diesel Generator Set**  
1x CAT C9 ACERT with SCR/DPF, 240 kW

<b>Maximum speed</b>	18 knots
<b>Cruising speed</b>	16 knots
<b>Range</b>	6,000nm @12knots

## SAFETY & SECURITY EQUIPMENT

- **Surveillance & Security**  
CCTV System, Stabilised Infrared Camera,  
Tender tracking system
- **Fire Safety**  
KJ FireOff® Water Mist System, firefighting  
equipment, vessel alarm system

## TANK CAPACITIES

<b>Fuel Capacity</b>	380,000 L
<b>Water Capacity</b>	75,000 L
<b>Black/Grey Water</b>	100,000 L

## ANCILLARY EQUIPMENT

<b>Bow Thruster</b>	JASTRAM bow thruster
<b>Stabilisers</b>	SKF – Zero-Speed
<b>Fresh-water maker</b>	RWO VEOLIA
<b>Air Conditioning</b>	MÖHRING Marine System

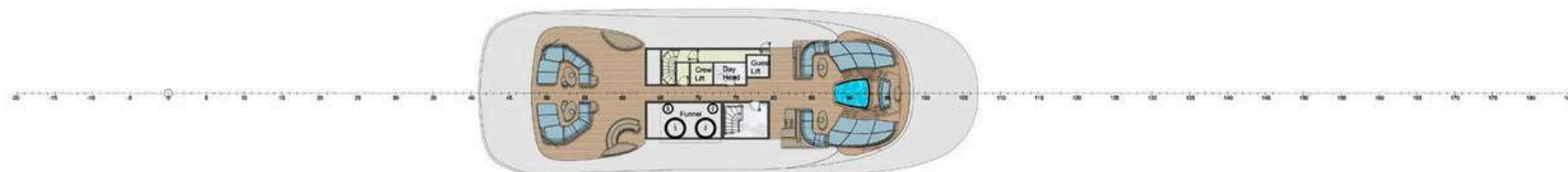
## DECK EQUIPMENT

<b>Anchors</b>	2x Pool-type galvanised steel anchors
<b>Capstans</b>	4x Steen warping capstans
<b>Windlasses</b>	2x Steen anchor windlasses
<b>Crane &amp; Davits</b>	4x Fuchs overhead cranes
<b>Swim platform</b>	OPACMARE stern transformer platform
<b>Spa/Jacuzzi</b>	1x on the sun deck forward 1x on the upper deck forward
<b>Pool</b>	Main deck aft – 7.6m × 4m × 1m
<b>Other</b>	Elevator servicing Lower, Main, Upper and Bridge Decks

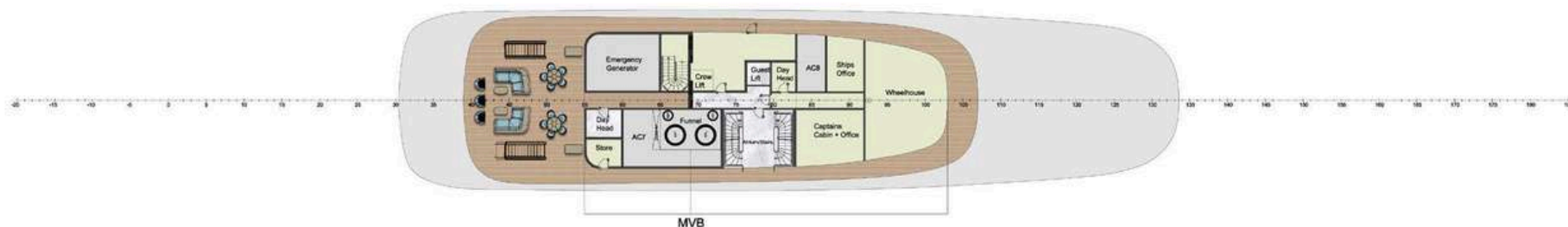




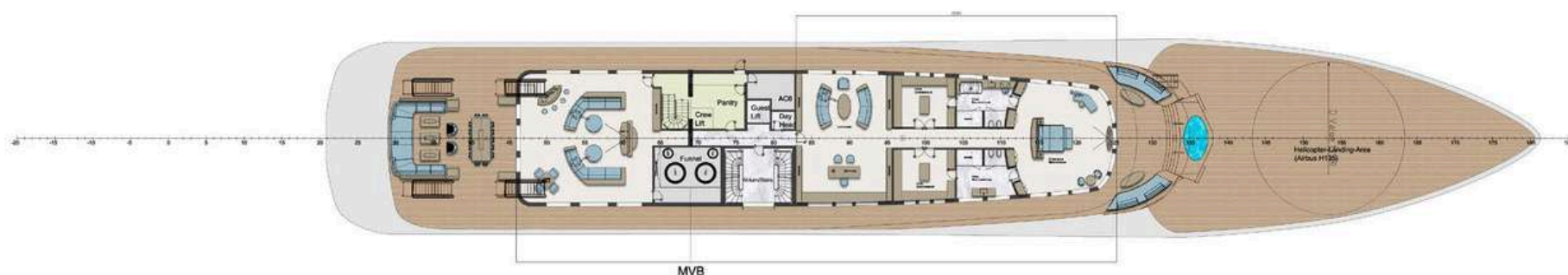
# GENERAL ARRANGEMENT



Sun Deck "SD"  
20,040 mm a.BL.  
Deck height: tbd  
Clear deck height:  
tbd



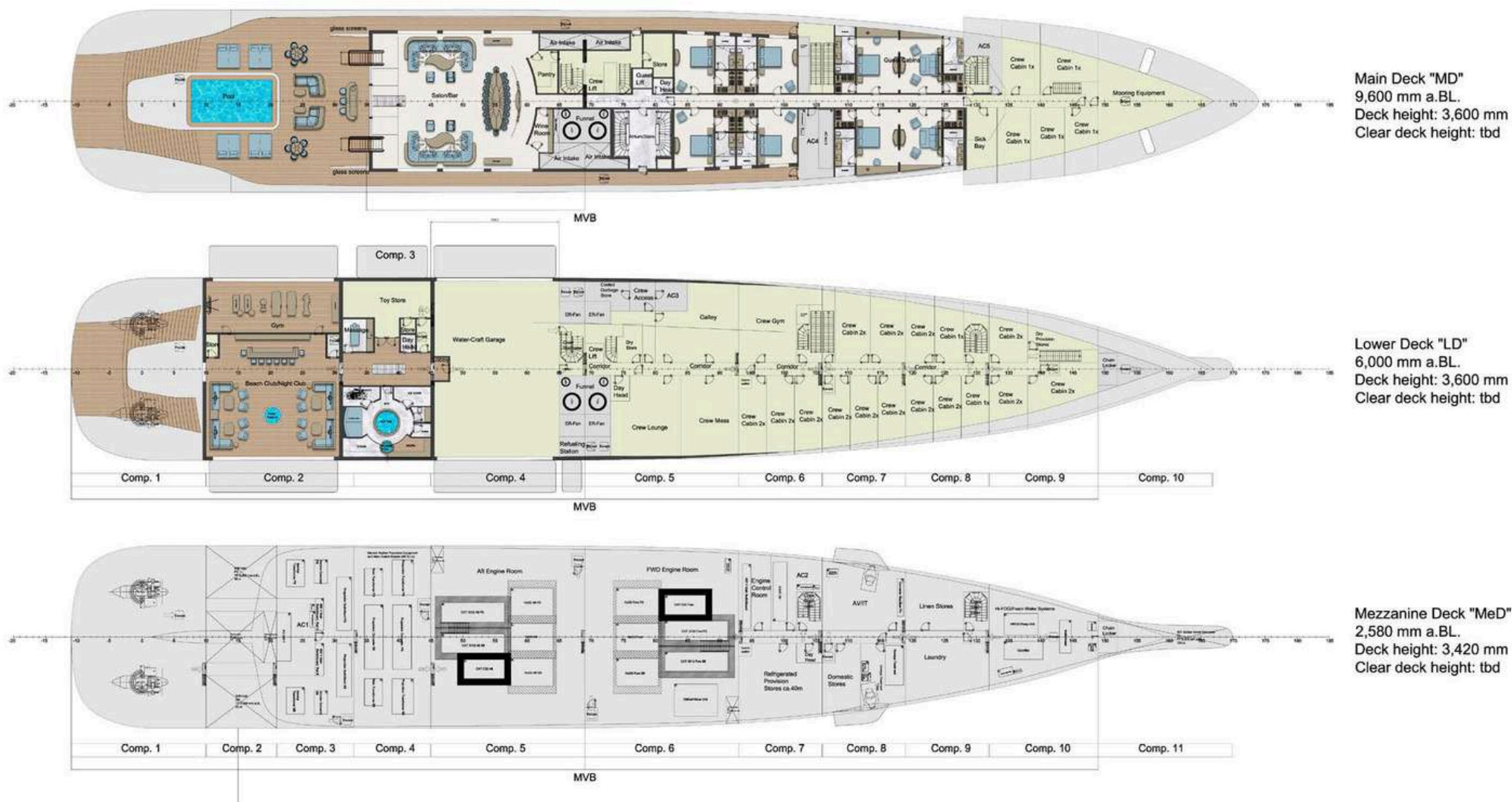
Bridge Deck  
"BD"  
16,620 mm a.BL.  
Deck height: 3,420  
mm  
Clear deck height:  
tbd



Upper Deck "UD"  
13,200 mm a.BL.  
Deck height: 3,420  
mm  
Clear deck height: tbd



# GENERAL ARRANGEMENT





## CONTACT

Adam Papadakis  
Head of Sales / Senior Sales Broker

+377 6 78 63 39 60  
adam.papadakis@moraviayachting.mc

Virginia Di Antonio  
Sales Broker

+377 37 70 21 10  
virginia.diantonio@moraviayachting.mc



While every effort has been made to ensure that the information contained in this document is accurate as at the date of production, the accuracy of such information cannot be guaranteed. Moravia Yachting gives no representation, warranty or undertaking, express or implied, as to: the accuracy, reliability, completeness or reasonableness of the information contained in this document; the condition of a featured yacht and/or its equipment; the seaworthiness of a featured yacht; or the suitability and/or availability of a featured yacht for purchase or charter. The fees, specifications, figures, images and comments included in this document are subject to change without notice. This document has been produced by Moravia Yachting at the request of the person identified on the front cover for discussion purposes only and is confidential. This document must not be copied or distributed to any third party, in whole or part, without Moravia Yachting's express written permission. Moravia Yachting hereby expressly excludes any liability howsoever arising in respect of any inaccuracies or errors in the information contained in this document, to the fullest extent permitted by law.

 A Hill Robinson company

  
**Moravia**  
YACHTING