

# LADY MARINA

For Sale



Builder	Feadship De Vries
Year/Refit	1999 / 2020
LOA	63.95m (209' 10")
Beam	10.8m (35' 4")
Draft	3.45m (11' 3")
Cabins	6+3
Guests	12+4
Cruising Speed	12.5 Knots
Maximum Speed	14.5 Knots
Price	€39,950,000 VAT Paid in EU







MAIN SALON





MAIN SALON





MAIN SALON - DINING



MASTER STATEROOM





MASTER STATEROOM



MASTER OFFICE



MASTER - EN SUITE





VIP CABIN



VIP CABIN- LOUNGE





TWIN CABIN





BOAT DECK AFT





BOAT DECK - SALON



BOAT DECK – SALON





OBSERVATION LOUNGE





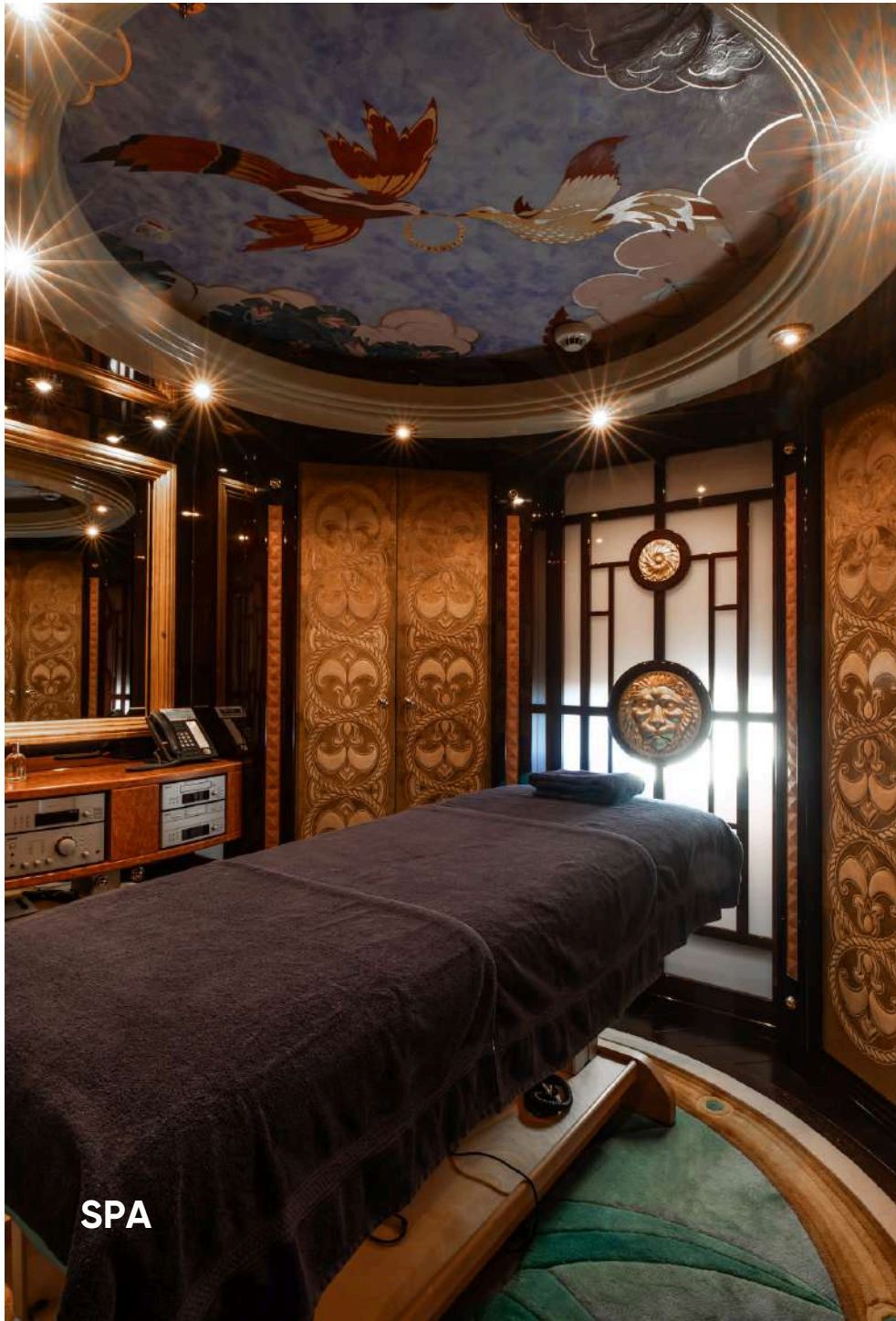
BOAT DECK - FWD





GYM









ENGINE ROOM







# YACHT SPECIFICATIONS

## MAIN SPECIFICATIONS

<b>Length</b>	63.95m
<b>Beam</b>	10.8m
<b>Draft</b>	3.45m
<b>Gross Tonnage</b>	1 279
<b>Registered</b>	383
<b>Year/Refit</b>	1999/2020
<b>Builder</b>	Feadship De Vries
<b>Naval Architect</b>	Feadship De Voogt Naval
<b>Interior Designer</b>	Donald Starkey
<b>Exterior Designer</b>	Studio De Voogt
<b>Hull Construction</b>	Steel / Aluminium
<b>Superstructure</b>	Aluminium
<b>Classification</b>	Lloyds Register
<b>Flag</b>	Cayman Islands
<b>Port of Registry</b>	Cayman Islands
<b>Price</b>	€39,950,000 EU VAT Paid

## ACCOMMODATION

<b>Number of Cabins</b>	6+3
<b>Total Guests</b>	12+4
<b>Total Crew</b>	16

## MACHINERY

<b>Main Engine</b>	2x CAT 3516 4,000hp
<b>Manufacturer</b>	CAT
<b>Total port engine hours</b>	18,300 (June 2025)
<b>Total stb. Engine hours</b>	18,300 (June 2025)
<b>Maximum speed</b>	14.5 Knots
<b>Cruising speed</b>	12.5 Knots
<b>Range</b>	5,500 nm
<b>Main Generator</b>	3 x CAT 3406 230kW
<b>Generator hours port</b>	21,775 (June 2025)
<b>Generator hours mid</b>	1,379 (June 2025)
<b>Generator hours stb</b>	1,379 (June 2025)

## AUXILIARY MACHINERY & ELECTRICAL SYSTEM

<b>Electric Power</b>	220V 50 hz
<b>Shore Power</b>	290A 3phase 400V
<b>Batteries</b>	House batteries are 24V with 48Ah

## SAFETY & SECURITY EQUIPMENT

<b>Safety</b>	Liferafts 2 x 16 pax + 2 x 24 pax. Sovitec brand
<b>Medical</b>	Full medair package
<b>Fire</b>	Hifog is Mariof brand
<b>Alarms &amp; Monitoring</b>	
E.P.I.R.B	2x
Closed circuit T.V.	Yes
Intercom	Yes

## TANK CAPACITIES (approximate)

<b>Fuel capacity</b>	201,000 Lt
<b>Water Capacity</b>	42,600 Lt
<b>Clean Lub Oil</b>	3,300 Lt
<b>Dirty Lub Oil</b>	4,500 Lt
<b>Grey Water</b>	4,500 Lt
<b>Black Water</b>	3,860 Lt

## ANCILLARY EQUIPMENT

<b>Steering System</b>	Tenfjord
<b>Bow Thruster</b>	Holland Roerpropeller
<b>Stabilisers</b>	2 pairs of Vosper Thornycroft
<b>Fuel separator</b>	Facet International
<b>Watermaker</b>	2 x HEM series 40 making 17,000 lpd each
<b>Air Conditioning</b>	Heinen and Hopman

## COMMUNICATION EQUIPMENT

<b>Internet</b>	Starlink marine dual antennae, VSAT antennae, 5G Meridial 360 antennae, pepwave 4G, + shore ethernet connection.
	Jacob Jensen
<b>VHF Radio</b>	Sailor brand
<b>UHF Com</b>	Kenwood brand



# YACHT SPECIFICATIONS

## NAVIGATION EQUIPMENT

<b>Magnetic Compass</b>	Casem and Platt
<b>Gyro Compass</b>	Anschutz Kiel
<b>Automatic Pilot</b>	Anschutz Kiel
<b>Log</b>	JCR
<b>Echo Sounder</b>	B&G
<b>Radar</b>	2X Furuno
<b>GPS / Navtex</b>	Furuno
<b>Wind Instruments</b>	B&G
<b>AIS</b>	Transas

## AUDIO/ VISUAL ENTERTAINMENT SYSTEM

Crestron throughout the yacht

## DECK EQUIPMENT

<b>Anchors</b>	2X 800 Kg
<b>Chain length</b>	2X 503 m
<b>Windlasses</b>	Steen
<b>Davits</b>	Akerboom
<b>Cranes</b>	Akerboom
<b>Capstans</b>	Akerboom
<b>Passarelle</b>	2 x Sunshine electric crop+
<b>Search light &amp; Horn</b>	2 x Feadship supplied

## DOMESTIC EQUIPMENT

### Galley & Laundry

6x Large Built in in fridge  
 2x Large Built in freezer  
 1x Walkin fridge room  
 1x Walkin freezer room  
 Rational Self-cleaning own  
 Panasonic Microwave  
 Electrolux cooktop with deep fryer and hot plate  
 Hoshizaki ice maker  
 Miele professional dishwasher

### Pantry Main Deck

Miele Dishwasher  
 Coffee machine, smoothie maker, drinks fridge

### Boat Deck Pantry

Miele professional dishwasher  
 Coffee machine, kettle, etc.

Ice maker

Drinks fridge

Microwave panasonic

### Helideck

Large outdoor grill with extractor  
 Outdoor wet bar with ice maker and drinks fridge  
 Dumb waiter

## DOMESTIC EQUIPMENT

### Laundry

2x Miele professional dryers  
 3x Miele professional washers  
 1x Linen roller  
 1x Steam iron  
 2x Wine fridges

### Crew Mess

2x Miele professional dishwashers  
 1x Large fridge  
 TV  
 Various small countertop appliances

### Other

Main deck aft fridge  
 Boat deck aft fridge and ice maker

## TENDERS & WATER TOYS EQUIPMENT

### Tenders

Tender 1	Castoldi 23' with 1 x inboard 260hp Yanmar engine, 7.1m LOA.
Tender 2	X-Tender 'Limo' style with 2 x inboard 250hp Yanmar engines, 9.62m LOA
Tender 3	3.7m rescue tender with 25hp Yamaha outboard



# YACHT SPECIFICATIONS

## TENDERS & WATER TOYS EQUIPMENT

### Toys

Waterskis	Yes
Wakeboard	Yes
Paddle Board	1x
Diving equipment	2 full sets of certified gear with 8 tanks
Diving compressor	Yes
Kayaks	2x

## WORKS LIST / REFITS

### Spring 2024

All tanks (ex water) sandblasted and recoated  
Antifoul renewed  
Replaced 2 generator blocks

### Spring 2023

tanks recoated where appropriate  
exhaust DPF replacement (ceramic filters renewed)  
Antifouling renewed  
forward stabilisers serviced  
full overhaul of HVAC system including all new heaters and evaporators and other components replaced where needed  
M.E. rocker arms replaced

## WORKS LIST / REFITS

### Spring 2022

Cleaning and inspection of all tanks  
Aft stabiliser fins serviced  
Rudder clearance measurements  
Passerelle serviced  
Cranes serviced  
HVAC ducting cleaning  
Teak deck repairs

### 2019/2020

20yr class survey completed  
Full paint job on hull and superstructure  
Regalvanise anchors  
Anodes replacement  
Rudders dropped for inspection  
Steering gear services  
Tail shafts and bearings pulled and serviced  
Stabilisers serviced  
Props and thruster serviced  
All tanks cleaned and or blasted and recoated  
All valves removed and serviced  
Boilers replaced

## WORKS LIST / REFITS

All pumps serviced  
Switchboard serviced  
Windlasses serviced  
Serviced passarelle, rescue boat crane, side boarding ladder  
New exterior light panel in bridge  
All davits serviced  
Hinges on hull tender doors serviced  
Transom door serviced  
Teak repairs and recaulking  
Bridge equipment serviced  
Various cabinetry and carpentry jobs



# CONTACT

Sam Tucker  
Sales Broker

+44 7548 765 406  
sam.tucker@moraviayachting.mc  
moraviayachting.mc

While every effort has been made to ensure that the information contained in this document is accurate as at the date of production, the accuracy of such information cannot be guaranteed. Moravia Yachting gives no representation, warranty or undertaking, express or implied, as to: the accuracy, reliability, completeness or reasonableness of the information contained in this document; the condition of a featured yacht and/or its equipment; the seaworthiness of a featured yacht; or the suitability and/or availability of a featured yacht for purchase or charter. The fees, specifications, figures, images and comments included in this document are subject to change without notice. This document has been produced by Moravia Yachting at the request of the person identified on the front cover for discussion purposes only and is confidential. This document must not be copied or distributed to any third party, in whole or part, without Moravia Yachting's express written permission. Moravia Yachting hereby expressly excludes any liability howsoever arising in respect of any inaccuracies or errors in the information contained in this document, to the fullest extent permitted by law.

 A Hill Robinson company

  
**Moravia**  
YACHTING