

# M&M

## For Sale

Builder	Sanlorenzo
Year/Refit	2020
LOA	26.7m (87' 6")
Beam	7.2m (23' 6")
Draft	1.7m (5' 5")
Cabins	4
Guests	8
Maximum Speed	23 Knots
Cruising Speed	20 Knots
Price	€5,300,000 VAT Paid



















MAIN SALON







MAIN SALON







MAIN SALON







MAIN DECK







MAIN DECK







DINING







DINING





DINING







STAIRS







MASTER BEDROOM







MASTER BEDROOM







MASTER BATHROOM







VIP CABIN



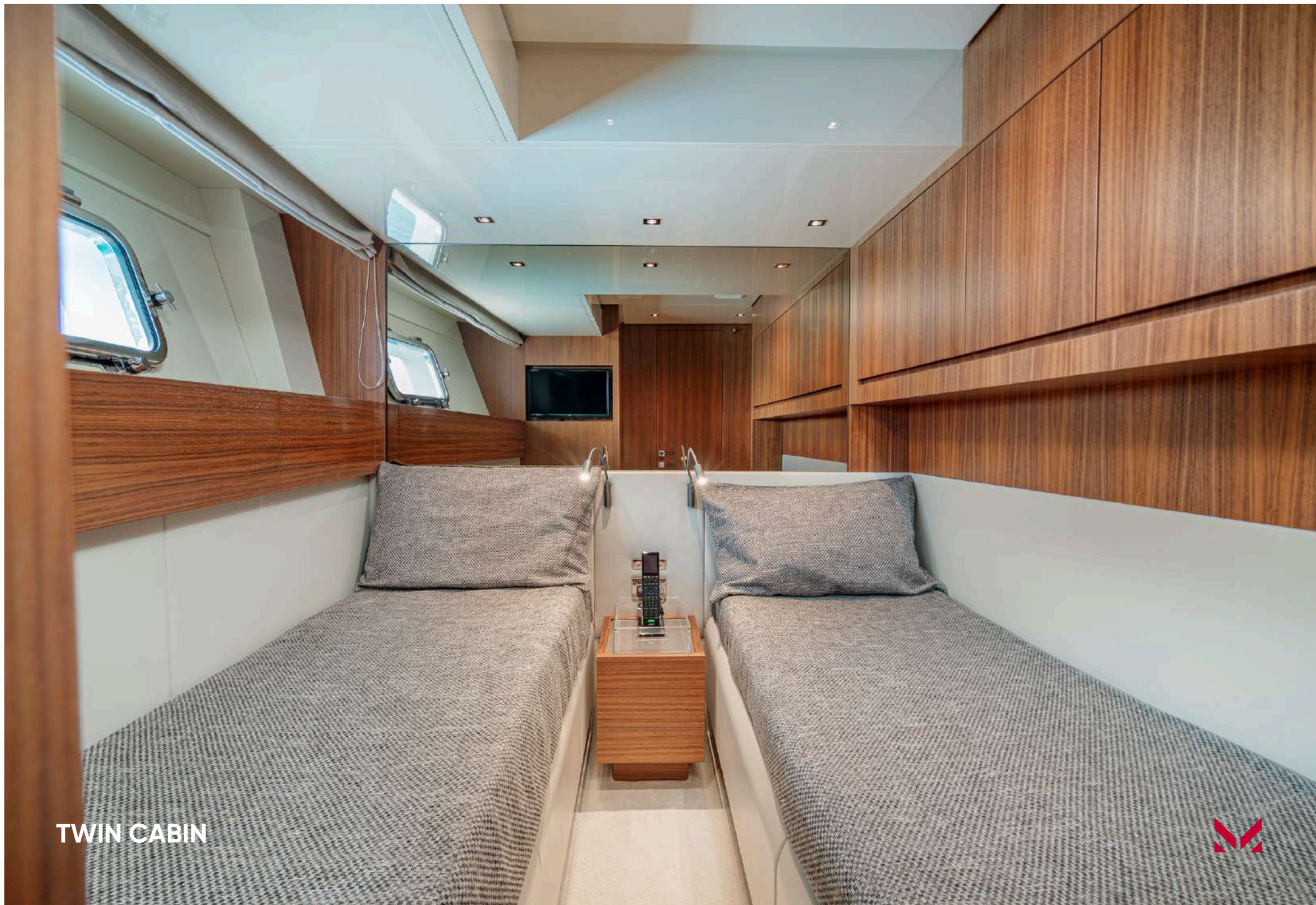




VIP CABIN







TWIN CABIN







GUEST CABIN – BATHROOM







GUEST CABIN - BATHROOM







GUEST CABIN - SHOWER







GALLEY







LAUNDRY AND CREW







BRIDGE







FRONT DECK







FRONT DECK







FLY BRIDGE







AFT DECK





UPPER DECK







UPPER DECK







UPPER DECK





UPPER DECK





# YACHT SPECIFICATIONS

## MAIN SPECIFICATIONS

Length	26.7m (87' 6")
Beam	7.2m (23' 6")
Draft	1.7m (5' 5")
Gross Tonnage	116
Year Built	2020
Builder	Sanlorenzo
Naval Architect	Sanlorenzo
Interior Designer	Lissoni Associati
Exterior Designer	Officina Italiana Design
Hull Construction	GRP
Superstructure	GRP
Decks	Teak
Paint system	Gel Coat
Classification	Rina
Flag	Italy
Port of Registry	Italy

## ACCOMMODATION

Number of Cabins	4
Total Guests	8
Total Crew	3

## MACHINERY

Main Engine	3 x IPS 1050 Volvo - 800 HP
Manufacturer	Volvo
Engines Hours	
Total port engine hours:	339
Total central engine hours:	339 (Jan 2025)
Total stb. Engine hours:	339
Maximum speed	23 Knots
Cruising speed	20 Knots
Range at cruising speed	570 nm
Range at economical speed	1120 nm at 10 Knots
Main Generator	Kohler 1x35 kw / Kohler 1x 28kw
Generator hours	1000 hours

## TANK CAPACITY (approximate)

Fuel Oil Tank Capacity	9,300 liters
Water Capacity	2,050 liters
Black Water	550 liters

## ANCILLARY EQUIPMENT

Steering System	YES
Bow Thruster	YES
Trimtabs	YES
Stabilisers	Fin stabilizers, underway and zero speed
Bilge/Fire Pump	YES
Boilers	150 liters
Watermarker	180 liters/hour
Idromar	
Heating	Inverter A/C YES
Air Conditioning	In cabins, salon and flybridge

## SAFETY & SECURITY EQUIPMENT

Fuel Capacity  
– 2 x 400 litres fuel tanks 150 litres day tank filled with electric pump with manual back up

Water Capacity  
– 2 x 340 litres fresh water capacity

These particulars have been prepared from information provided by the sellers and are intended as a general guide to the vessel. We cannot, however, be liable for any inaccuracy. It is up to the purchaser to confirm details of concern to him by survey, inspection and/or enquiry of the seller and to ensure that the purchase contract properly reflects his concern and specific details upon which he may rely. We always advise an independent survey.





# YACHT SPECIFICATIONS

## NAVIGATION EQUIPMENT

---

- Magnetic Compass
- Rudder indicator
- Automatic Pilot
- Log
- Echo Sounder
- Radar
- GPS
- Wind Instruments

## CONSTRUCTION

---

- Anchors
- Windlasses
- Cranes
- Capstans
- 2x Stern Winches
- Submersible Bathing Platform
- Swimming ladder
- Passarelle
- Sun Awning
- Search light & Horn
- Hard Top with electric opening roof with blades

## AUDIO/VISUAL ENTERTAINMENT SYSTEM

---

- Satellite TV in Salon 55', Playroom, Master 40' , VIP and guest 24'
- TV Home Cinema/Hi-Fi/Bluetooth in Salon
- Hi-Fi/Bluetooth in Master and VIP cabins
- Hi-Fi/Bluetooth in twin cabins
- Mobile high-speed internet systems with harbour hot spot

## DOMESTIC EQUIPMENT

---

### Galley equipment

- Refrigerators in galley and deck
- Freezers
- Ovens
- Ceramic hot plate Miele 75 cm
- Microwaves
- Dishwashers
- Other Miele Wine Cooler in dining area

### Laundry equipment

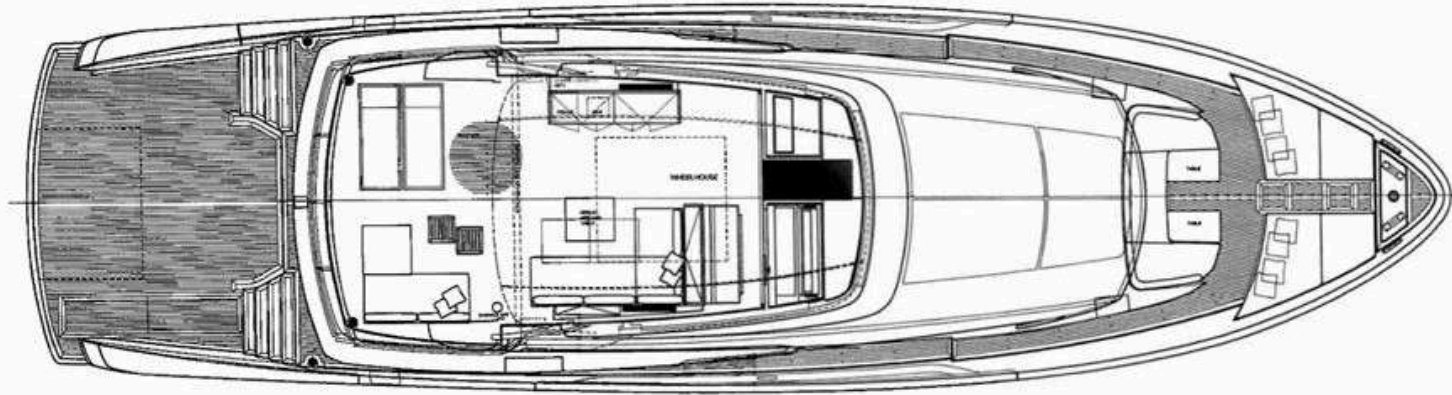
- Washing Machines
- Dryers

These particulars have been prepared from information provided by the sellers and are intended as a general guide to the vessel. We cannot, however, be liable for any inaccuracy. It is up to the purchaser to confirm details of concern to him by survey, inspection and/or enquiry of the seller and to ensure that the purchase contract properly reflects his concern and specific details upon which he may rely. We always advise an independent survey.

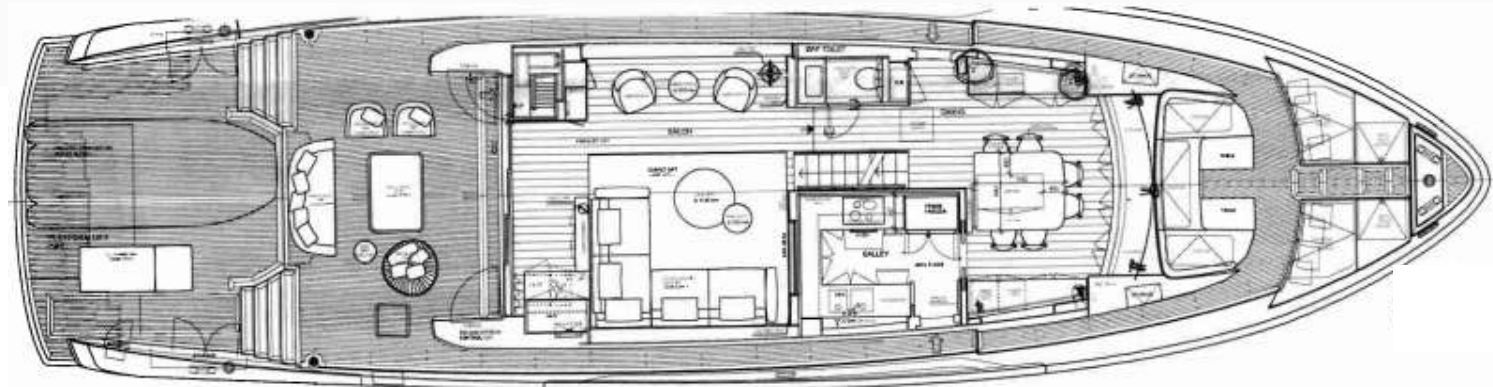




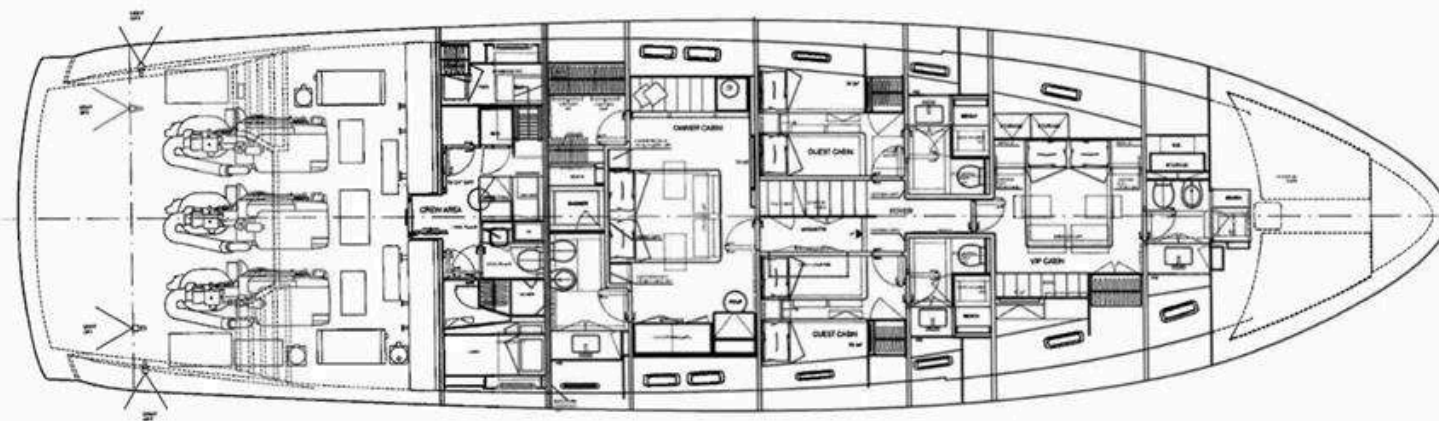
## GENERAL ARRANGEMENT



FLY BRIDGE



MAIN DECK



LOWER DECK



## CONTACT

**Alessandro Diomedì**  
Sales Broker

+377 6 43 91 90 54  
alessandro.diomedì@moraviayachting.mc  
moraviayachting.mc

While every effort has been made to ensure that the information contained in this document is accurate as at the date of production, the accuracy of such information cannot be guaranteed. Moravia Yachting gives no representation, warranty or undertaking, express or implied, as to: the accuracy, reliability, completeness or reasonableness of the information contained in this document; the condition of a featured yacht and/or its equipment; the seaworthiness of a featured yacht; or the suitability and/or availability of a featured yacht for purchase or charter. The fees, specifications, figures, images and comments included in this document are subject to change without notice. This document has been produced by Moravia Yachting at the request of the person identified on the front cover for discussion purposes only and is confidential. This document must not be copied or distributed to any third party, in whole or part, without Moravia Yachting's express written permission. Moravia Yachting hereby expressly excludes any liability howsoever arising in respect of any inaccuracies or errors in the information contained in this document, to the fullest extent permitted by law.

 A Hill Robinson company

  
**Moravia**  
YACHTING