

ST-BARTH II

For Sale

Builder	St-Barth Yachting
Year/Refit	2025
LOA	26m (85' 3")
Beam	6.30m (20' 7")
Draft	1.65m (5' 4")
Cabins	4
Guests	8
Cruising Speed	18 Knots
Maximum Speed	28 Knots
Price	€7,680,000 Ex VAT



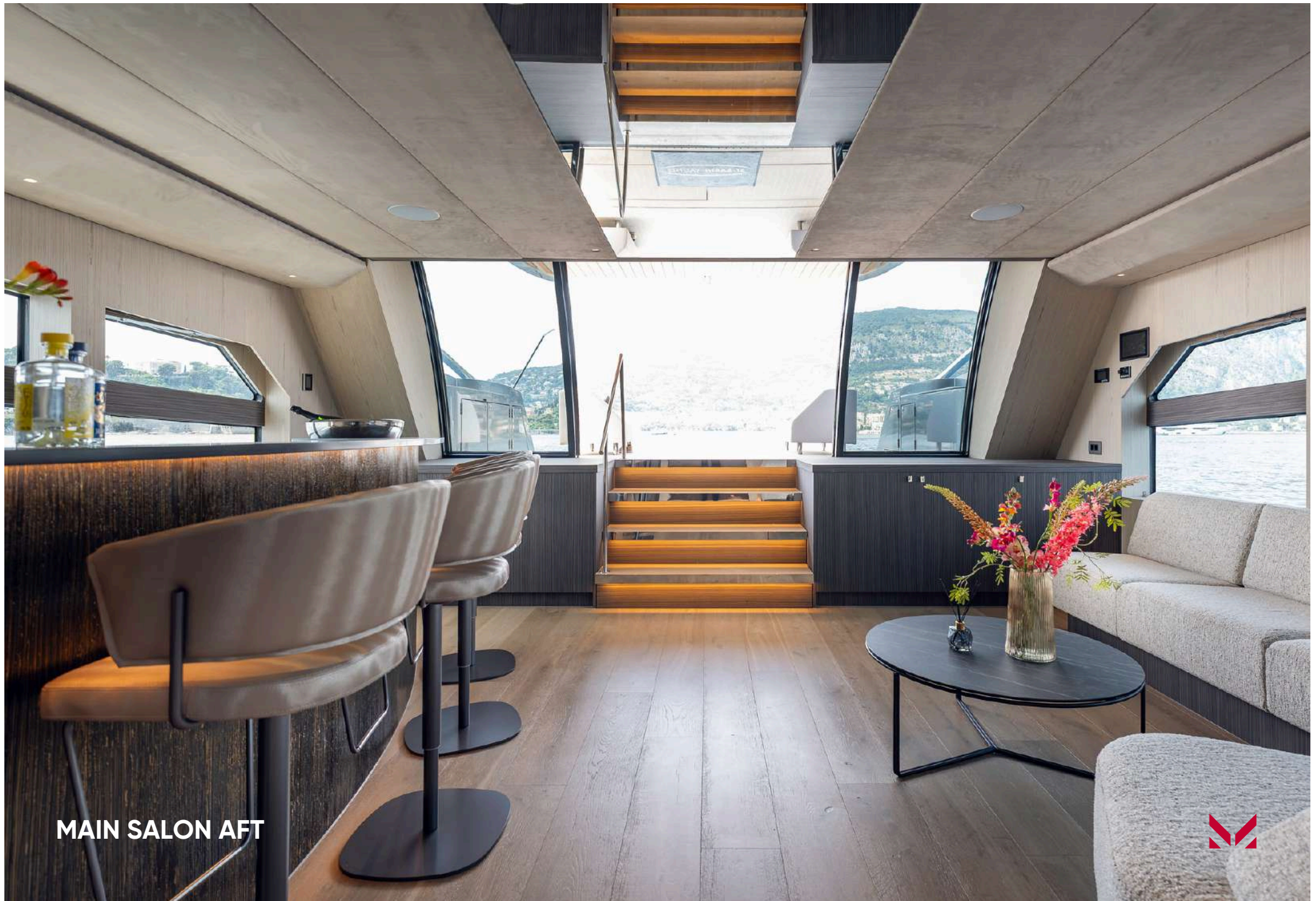






MAIN SALON





MAIN SALON AFT





MASTER CABIN





MASTER CABIN BATHROOM





GUEST CABIN





GUEST CABIN BATHROOM



BRIDGE DECK SALON & GALLEY





GALLEY





BRIDGE DECK AFT





FLY BRIDGE





BRIDGE HELM STATION





FOREDECK SEATING



JACUZZI





BEACH CLUB



YACHT SPECIFICATIONS

MAIN SPECIFICATIONS

Flag	Netherlands
Length	26m (85' 3")
Beam	6.30m (20' 7")
Draft	1.65m (5' 4")
Gross Tonnage	110 GT
Weight	63 tonnes
Builder	St-Barth Yachting
Year Built	2025
Naval Architect	Wijk Yacht Creations
Interior Designer	St-Barth Yachting
Exterior Designer	AR Design / St-Barth Yachting
Hull Construction	Aluminium
Hull material	Aluminium
Superstructure	Aluminium
Decks	Flexi Teak
Classification	CE Ocean A

ACCOMODATION

Guest cabins	4
Guest berths	8
Arrangement	1x Master Cabin, 2x VIP, 1x Guest Cabin
Crew cabins	1
Crew berths	3

AUXILIARY MACHINERY & ELECTRICAL SYSTEM

Main generator	20 kW Northern Lights 380 V
Emergency Generator	6 kW Whisper Power 24 V
Shore Power 1	400 V / 32 A
Shore Power 2	230 V / 32 A
Batteries	1950 Ah
Inverter Power	Victron Quattro 3-phase 24 kW

TANK CAPACITIES (approximate)

Diesel	7,500 litres
Freshwater 1	1,200 litres
Freshwater 2	200 litres
Grey Water	600 litres
Black Water	800 litres
Jacuzzi	1600 litres, 4 person with automatic filter system

ANCILLARY EQUIPMENT

Bow Thruster	Sleipner E350 eVision 24 V
Stabilisers	Volvo interceptors & zero-speed Sleipner stabilisation fins
Watermaker	Spectra Newport 1000C 140l/h
Air Conditioning	Termodinamica fresh air and air-conditioning system

MACHINERY

Main Engines	2
Manufacturer	Volvo Model: Penta 1350 IPS
Consumptions	
at cruising speed	190 litres per hours at 18 knots
at an economical speed	65 litres hour at 10 knots
Speed	
Maximum speed	28 Knots
Cruising speed	18 Knots
Economical speed	10 Knots
Range	
at cruising speed	700 nm at 18 knots
at economical speed	1,200 nm at 10 knots

NAVIGATION EQUIPMENT

- Volvo Penta Glass Cockpit
- Garmin navigation equipment
- Garmin 360-degree surround view camera system
- Dockmate system for engines and anchor



YACHT SPECIFICATIONS

DECK EQUIPMENT

- **Anchor:** Hidden anchor system with 80kg ULTRA anchor
- **Exterior lighting:** 10x Aqualuma blue underwater lights and 6x Quick pop-up
- **Hydraulic system:** FEEBE high-low stair platform / Tender crane / Electronic tilting radar mast

AUDIO/VISUAL ENTERTAINMENT SYSTEM

- 1 x Flatscreen TV
- Fusion marine audio system
- Bowers & Wilkins speaker system
- Starlink Internet

DOMESTIC EQUIPMENT

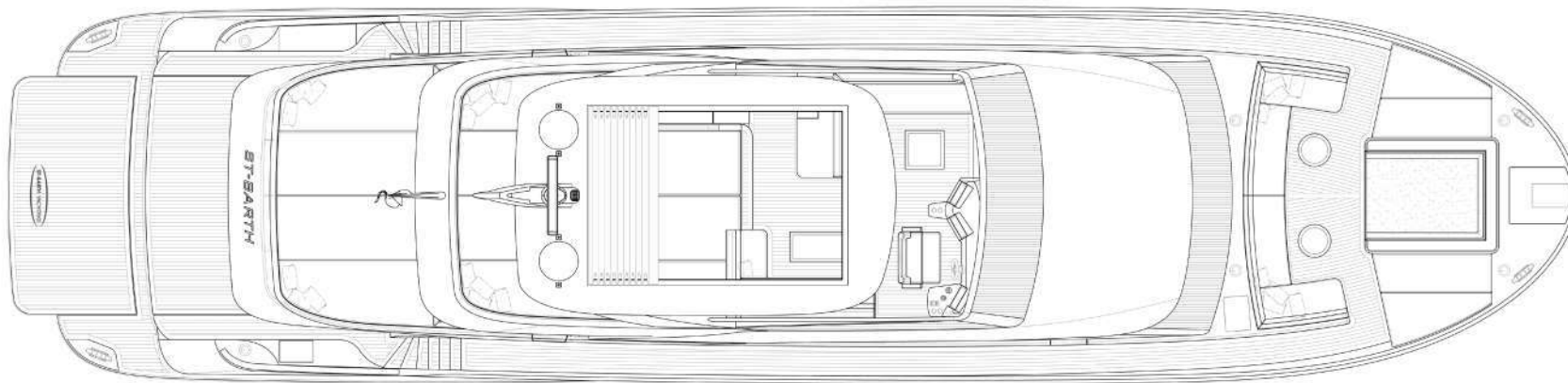
Galley equipment

- Miele induction hob, Teppanyaki grill, steam combi and sous vide cookware
- Winterhalter commercial dishwasher
- Trasher press
- Vitrifrigo refrigerator and freezer drawer with icemaker
- Liebherr wine cooler
- Miele washer-dryer combination
- Build-in refrigerator on jacuzzi deck
- Bar with sink and refrigerator drawers in salon
- Lounge sofa's on beach club
- Kenyon BBQ grill on beach club and flybridge
- Jura Z10 automatic coffee machine

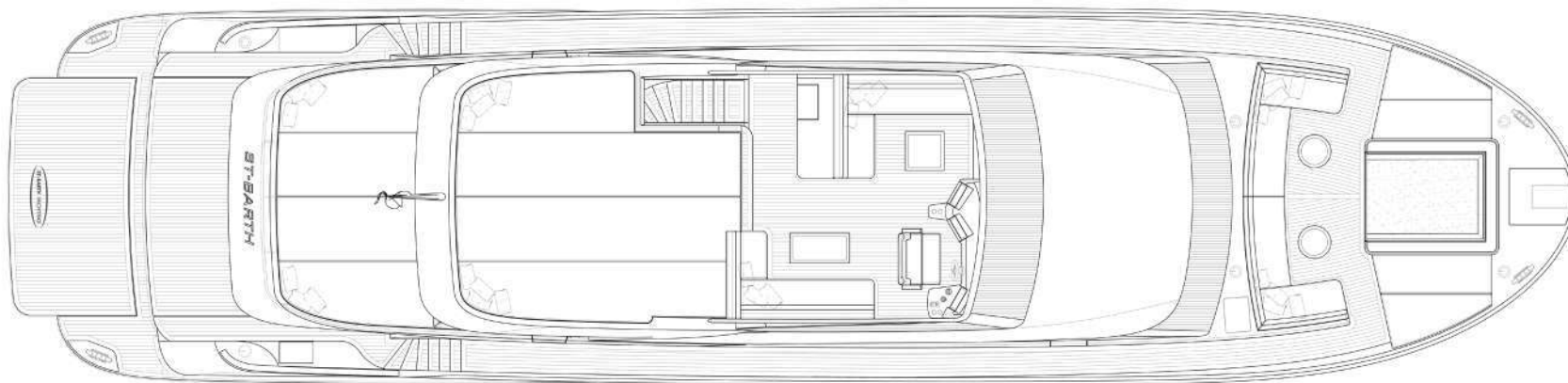
TENDERS & WATER TOYS EQUIPMENT

- Agilis custom diesel 360D jet tender
- Seabob
- Flite board
- Toy storage in a hydraulic lift

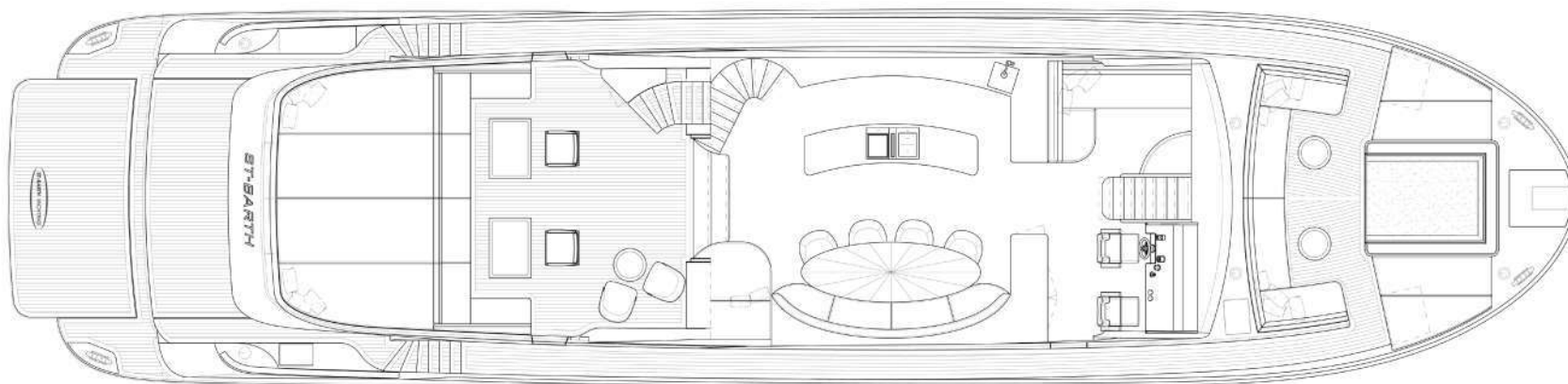




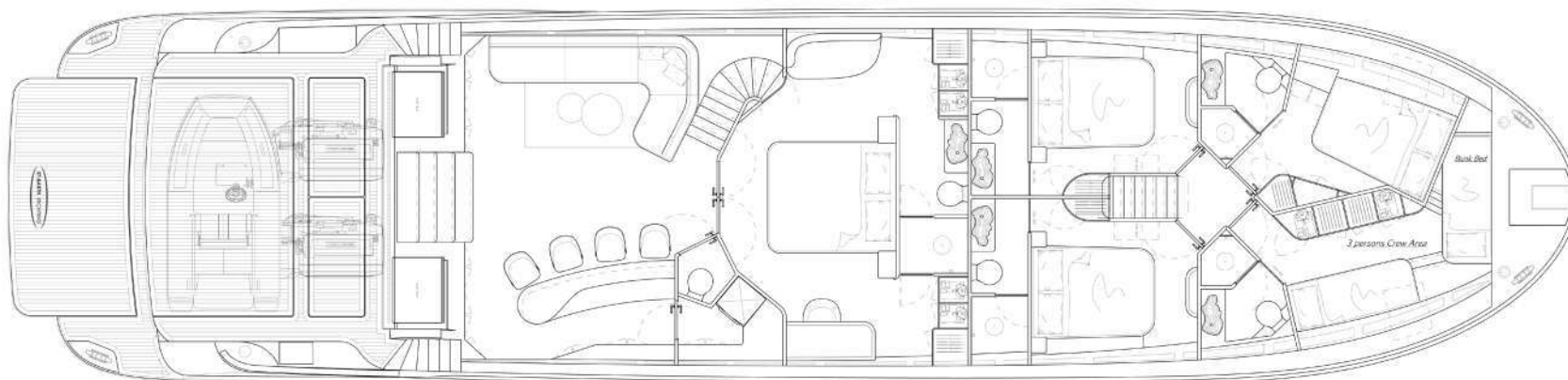
Top View



Flybridge Deck



Bridge Deck



Main Deck



CONTACT

Tim Carbury
Sales Broker

+377 643 912 570
tim.carbury@moraviayachting.mc
moraviayachting.mc

While every effort has been made to ensure that the information contained in this document is accurate as at the date of production, the accuracy of such information cannot be guaranteed. Moravia Yachting gives no representation, warranty or undertaking, express or implied, as to: the accuracy, reliability, completeness or reasonableness of the information contained in this document; the condition of a featured yacht and/or its equipment; the seaworthiness of a featured yacht; or the suitability and/or availability of a featured yacht for purchase or charter. The fees, specifications, figures, images and comments included in this document are subject to change without notice. This document has been produced by Moravia Yachting at the request of the person identified on the front cover for discussion purposes only and is confidential. This document must not be copied or distributed to any third party, in whole or part, without Moravia Yachting's express written permission. Moravia Yachting hereby expressly excludes any liability howsoever arising in respect of any inaccuracies or errors in the information contained in this document, to the fullest extent permitted by law.

 A Hill Robinson company


Moravia
YACHTING