

LADY MARINA

For Sale



Builder	Feadship De Vries
Year/Refit	1999 / 2020
LOA	63.95m (209' 10")
Beam	10.8m (35' 4")
Draft	3.45m (11' 3")
Cabins	6+3
Guests	12+4
Cruising Speed	12.5 Knots
Maximum Speed	14.5 Knots
Price	€39,950,000 VAT Paid in EU







MAIN SALON





MAIN SALON





MAIN SALON - DINING



MASTER STATEROOM





MASTER STATEROOM



MASTER OFFICE



MASTER - EN SUITE





VIP CABIN



VIP CABIN- LOUNGE





TWIN CABIN





BOAT DECK AFT





BOAT DECK - SALON



BOAT DECK – SALON



OBSERVATION LOUNGE





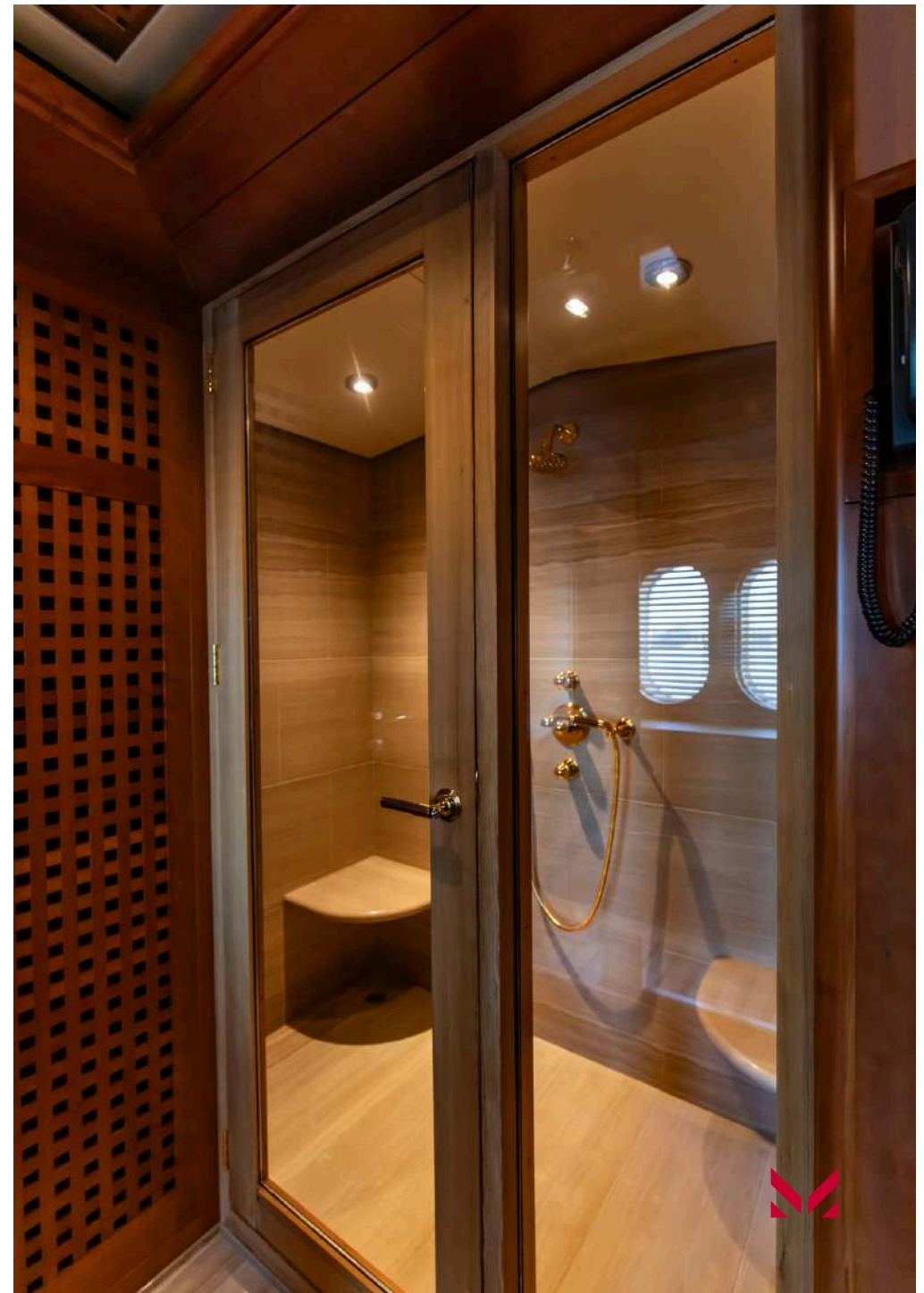
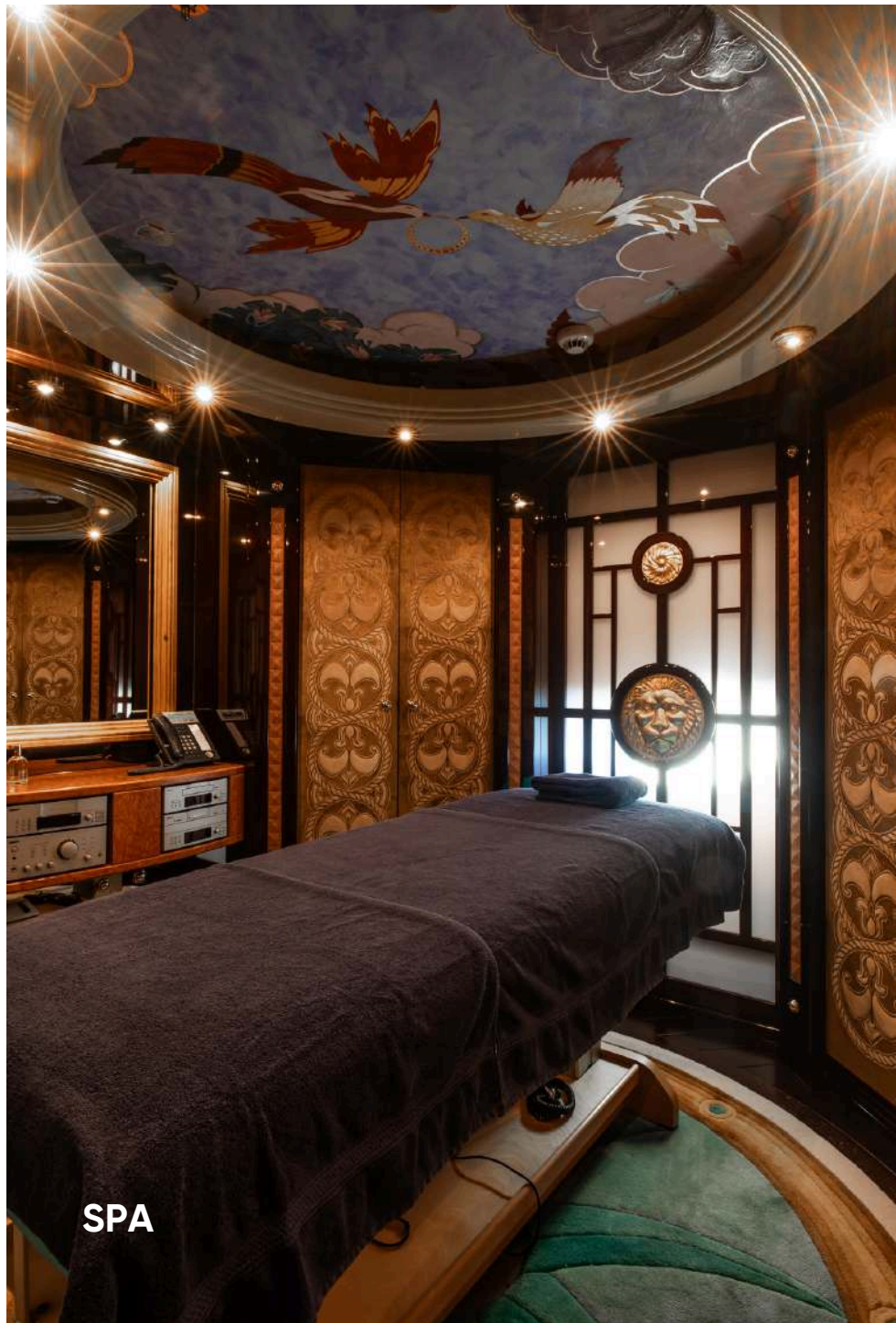
BOAT DECK - FWD





GYM





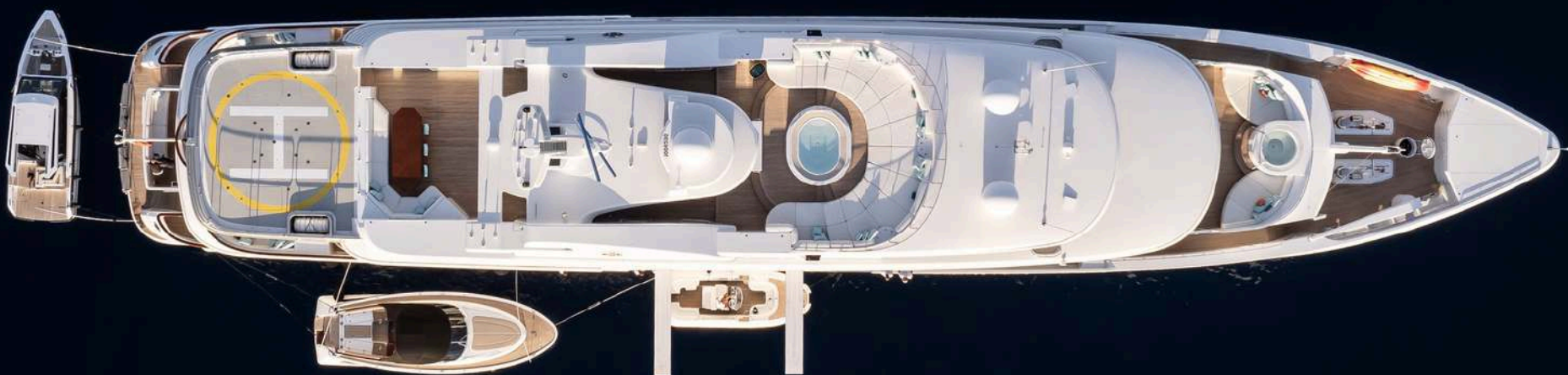




ENGINE ROOM







YACHT SPECIFICATIONS

MAIN SPECIFICATIONS

Length	63.95m
Beam	10.8m
Draft	3.45m
Gross Tonnage	1 279
Registered	383
Year/Refit	1999/2020
Builder	Feadship De Vries
Naval Architect	Feadship De Voogt Naval
Interior Designer	Donald Starkey
Exterior Designer	Studio De Voogt
Hull Construction	Steel / Aluminium
Superstructure	Aluminium
Classification	Lloyds Register
Flag	Cayman Islands
Port of Registry	Cayman Islands
Price	€39,950,000 EU VAT Paid

ACCOMMODATION

Number of Cabins	6+3
Total Guests	12+4
Total Crew	16

MACHINERY

Main Engine	2x CAT 3516 4,000hp
Manufacturer	CAT
Total port engine hours	18,300 (June 2025)
Total stb. Engine hours	18,300 (June 2025)
Maximum speed	14.5 Knots
Cruising speed	12.5 Knots
Range	5,500 nm
Main Generator	3 x CAT 3406 230kW
Generator hours port	21,775 (June 2025)
Generator hours mid	1,379 (June 2025)
Generator hours stb	1,379 (June 2025)

AUXILIARY MACHINERY & ELECTRICAL SYSTEM

Electric Power	220V 50 hz
Shore Power	290A 3phase 400V
Batteries	House batteries are 24V with 48Ah

SAFETY & SECURITY EQUIPMENT

Safety	Liferafts 2 x 16 pax + 2 x 24 pax. Sovitec brand
Medical	Full medair package
Fire	Hifog is Mariof brand
Alarms & Monitoring	
E.P.I.R.B	2x
Closed circuit T.V.	Yes
Intercom	Yes

TANK CAPACITIES (approximate)

Fuel capacity	201,000 Lt
Water Capacity	42,600 Lt
Clean Lub Oil	3,300 Lt
Dirty Lub Oil	4,500 Lt
Grey Water	4,500 Lt
Black Water	3,860 Lt

ANCILLARY EQUIPMENT

Steering System	Tenfjord
Bow Thruster	Holland Roerpropeller
Stabilisers	2 pairs of Vosper Thornycroft
Fuel separator	Facet International
Watermaker	2 x HEM series 40 making 17,000 lpd each
Air Conditioning	Heinen and Hopman

COMMUNICATION EQUIPMENT

Internet	Starlink marine dual antennae, VSAT antennae, 5G Meridial 360 antennae, pepwave 4G, + shore ethernet connection.
	Jacob Jensen
VHF Radio	Sailor brand
UHF Com	Kenwood brand



YACHT SPECIFICATIONS

NAVIGATION EQUIPMENT

Magnetic Compass	Casem and Platt
Gyro Compass	Anschutz Kiel
Automatic Pilot	Anschutz Kiel
Log	JCR
Echo Sounder	B&G
Radar	2X Furuno
GPS / Navtex	Furuno
Wind Instruments	B&G
AIS	Transas

AUDIO/ VISUAL ENTERTAINMENT SYSTEM

Crestron throughout the yacht

DECK EQUIPMENT

Anchors	2X 800 Kg
Chain length	2X 503 m
Windlasses	Steen
Davits	Akerboom
Cranes	Akerboom
Capstans	Akerboom
Passarelle	2 x Sunshine electric crop+
Search light & Horn	2 x Feadship supplied

DOMESTIC EQUIPMENT

Galley & Laundry

6x Large Built in in fridge
 2x Large Built in freezer
 1x Walkin fridge room
 1x Walkin freezer room
 Rational Self-cleaning own
 Panasonic Microwave
 Electrolux cooktop with deep fryer and hot plate
 Hoshizaki ice maker
 Miele professional dishwasher

Pantry Main Deck

Miele Dishwasher
 Coffee machine, smoothie maker, drinks fridge

Boat Deck Pantry

Miele professional dishwasher
 Coffee machine, kettle, etc.

Ice maker

Drinks fridge

Microwave panasonic

Helideck

Large outdoor grill with extractor
 Outdoor wet bar with ice maker and drinks fridge
 Dumb waiter

DOMESTIC EQUIPMENT

Laundry

2x Miele professional dryers
 3x Miele professional washers
 1x Linen roller
 1x Steam iron
 2x Wine fridges

Crew Mess

2x Miele professional dishwashers
 1x Large fridge
 TV
 Various small countertop appliances

Other

Main deck aft fridge
 Boat deck aft fridge and ice maker

TENDERS & WATER TOYS EQUIPMENT

Tenders

Tender 1	Castoldi 23' with 1 x inboard 260hp Yanmar engine, 7.1m LOA.
Tender 2	X-Tender 'Limo' style with 2 x inboard 250hp Yanmar engines, 9.62m LOA
Tender 3	3.7m rescue tender with 25hp Yamaha outboard



YACHT SPECIFICATIONS

TENDERS & WATER TOYS EQUIPMENT

Toys

Waterskis	Yes
Wakeboard	Yes
Paddle Board	1x
Diving equipment	2 full sets of certified gear with 8 tanks
Diving compressor	Yes
Kayaks	2x

WORKS LIST / REFITS

Spring 2024

All tanks (ex water) sandblasted and recoated
Antifoul renewed
Replaced 2 generator blocks

Spring 2023

tanks recoated where appropriate
exhaust DPF replacement (ceramic filters renewed)
Antifouling renewed
forward stabilisers serviced
full overhaul of HVAC system including all new heaters and evaporators and other components replaced where needed
M.E. rocker arms replaced

WORKS LIST / REFITS

Spring 2022

Cleaning and inspection of all tanks
Aft stabiliser fins serviced
Rudder clearance measurements
Passerelle serviced
Cranes serviced
HVAC ducting cleaning
Teak deck repairs

2019/2020

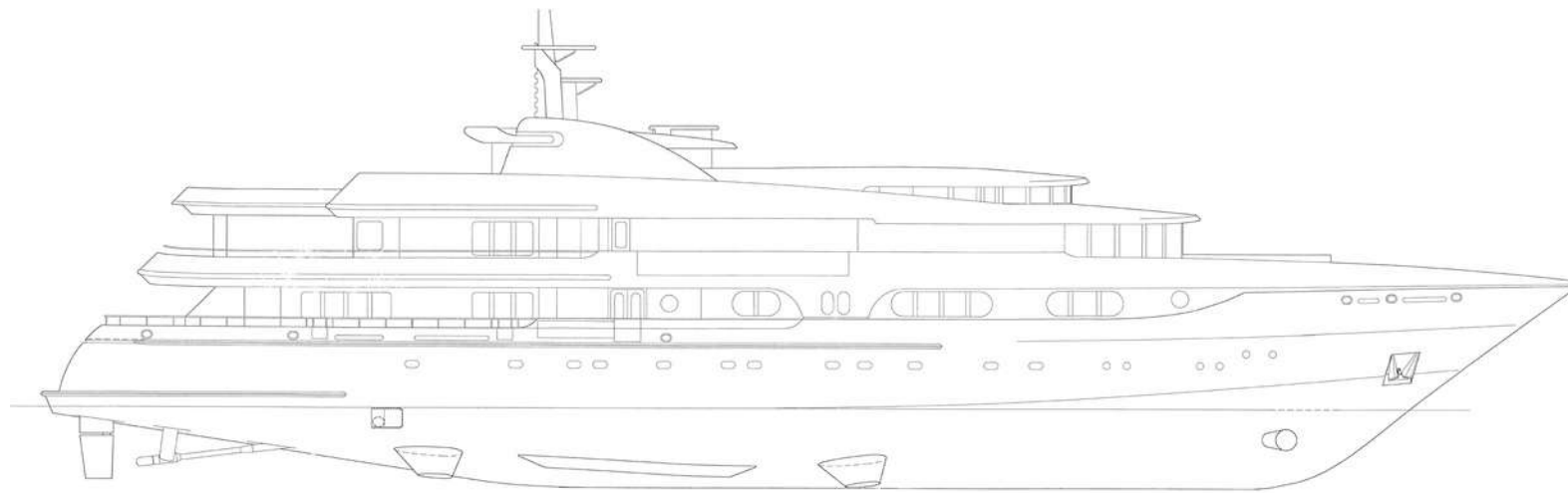
20yr class survey completed
Full paint job on hull and superstructure
Regalvanise anchors
Anodes replacement
Rudders dropped for inspection
Steering gear services
Tail shafts and bearings pulled and serviced
Stabilisers serviced
Props and thruster serviced
All tanks cleaned and or blasted and recoated
All valves removed and serviced
Boilers replaced

WORKS LIST / REFITS

All pumps serviced
Switchboard serviced
Windlasses serviced
Serviced passarelle, rescue boat crane, side boarding ladder
New exterior light panel in bridge
All davits serviced
Hinges on hull tender doors serviced
Transom door serviced
Teak repairs and recaulking
Bridge equipment serviced
Various cabinetry and carpentry jobs



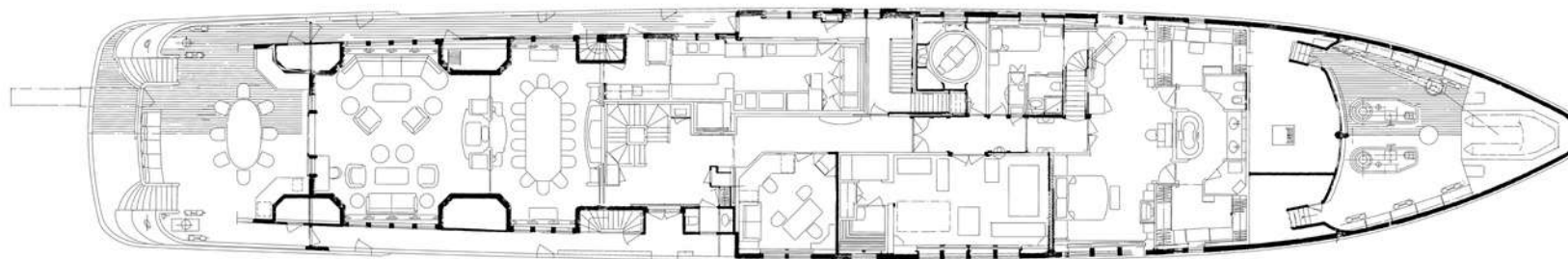
GENERAL ARRANGEMENT



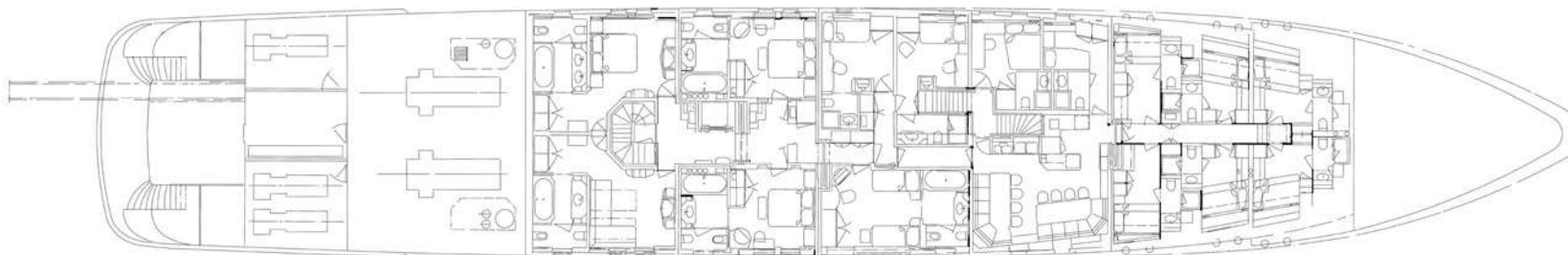
PROFILE



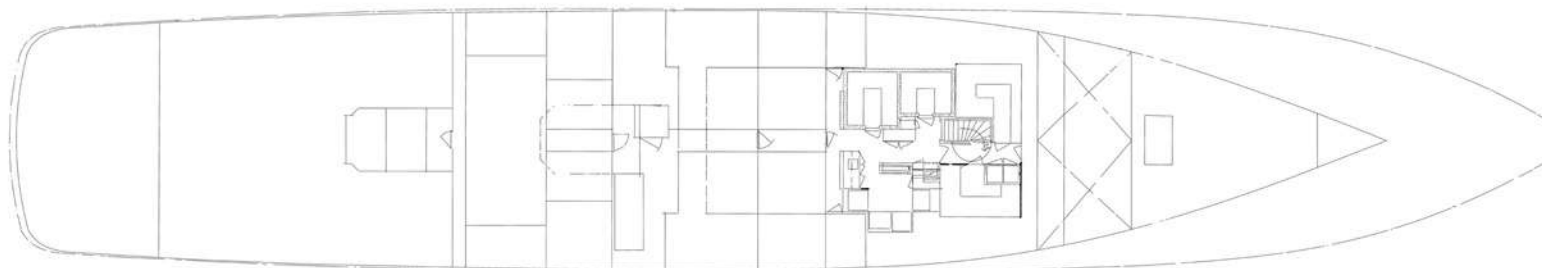
GENERAL ARRANGEMENT



MAIN DECK



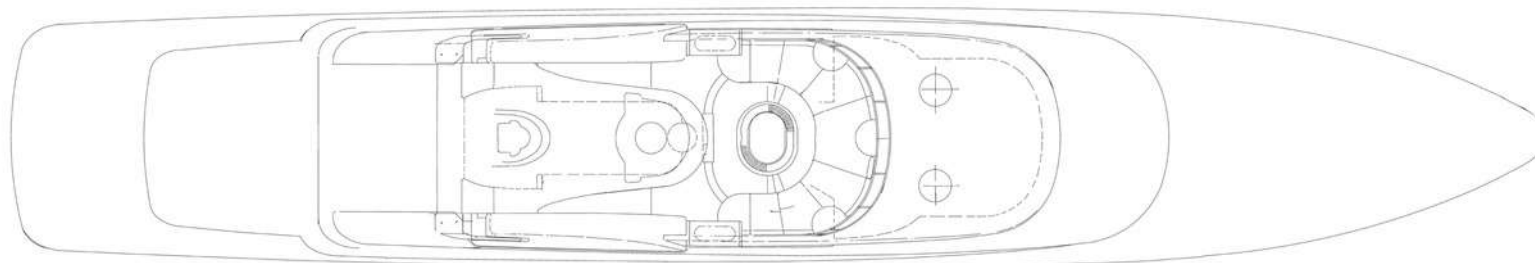
LOWER DECK



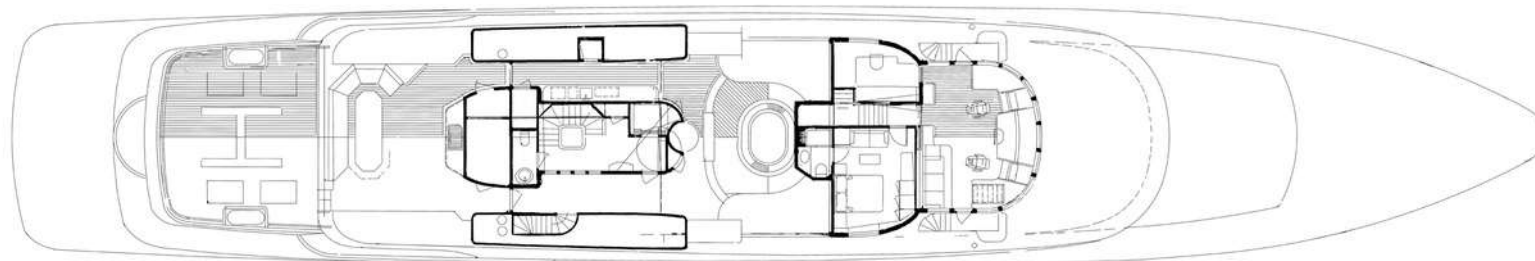
TANK DECK



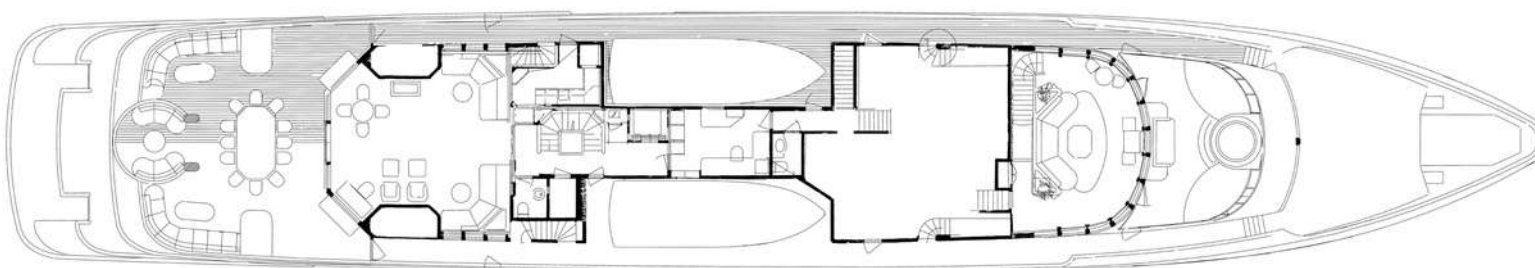
GENERAL ARRANGEMENT



TOP VIEW



SUN/HELI DECK



BOAT DECK



CONTACT

Sam Tucker
Sales Broker

+44 7548 765 406
sam.tucker@moraviayachting.mc
moraviayachting.mc

While every effort has been made to ensure that the information contained in this document is accurate as at the date of production, the accuracy of such information cannot be guaranteed. Moravia Yachting gives no representation, warranty or undertaking, express or implied, as to: the accuracy, reliability, completeness or reasonableness of the information contained in this document; the condition of a featured yacht and/or its equipment; the seaworthiness of a featured yacht; or the suitability and/or availability of a featured yacht for purchase or charter. The fees, specifications, figures, images and comments included in this document are subject to change without notice. This document has been produced by Moravia Yachting at the request of the person identified on the front cover for discussion purposes only and is confidential. This document must not be copied or distributed to any third party, in whole or part, without Moravia Yachting's express written permission. Moravia Yachting hereby expressly excludes any liability howsoever arising in respect of any inaccuracies or errors in the information contained in this document, to the fullest extent permitted by law.

 A Hill Robinson company


Moravia
YACHTING