

# SKY

For Sale



Builder	Stoczina Polnochna
Year/Refit	1999
LOA	89.39m
Beam	22.6m (Ship breadth 13.4m)
Draft	4.1m
Crew cabins	26
Crew berths	59
GT	1,728
Price	€18,000,000 Exc. VAT





MAIN DECK

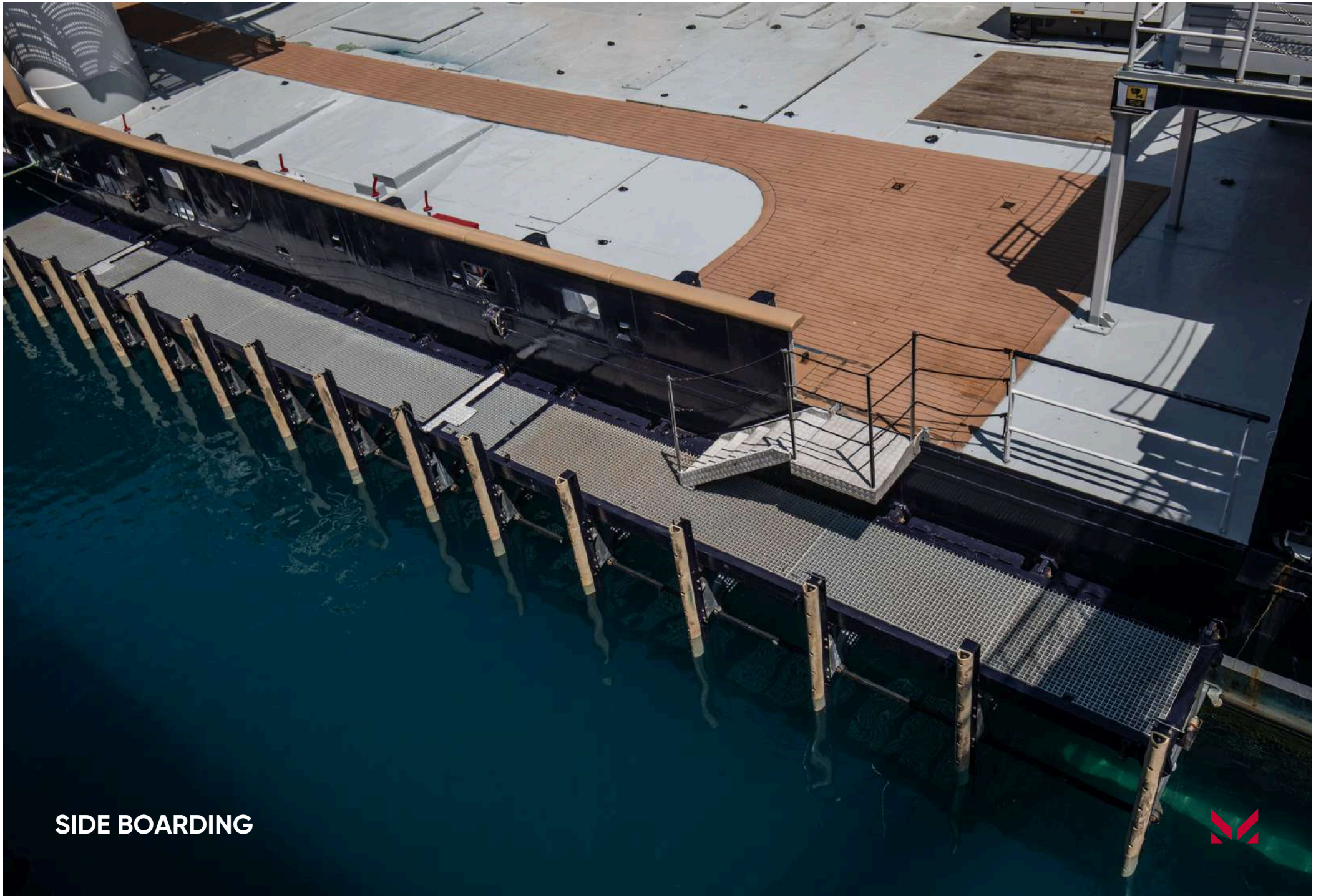




HELIDECK







**SIDE BOARDING**







FWD BRIDGE





AFT BRIDGE







CAPTAIN OFFICE







CREW LOUNGE







CREW MESS



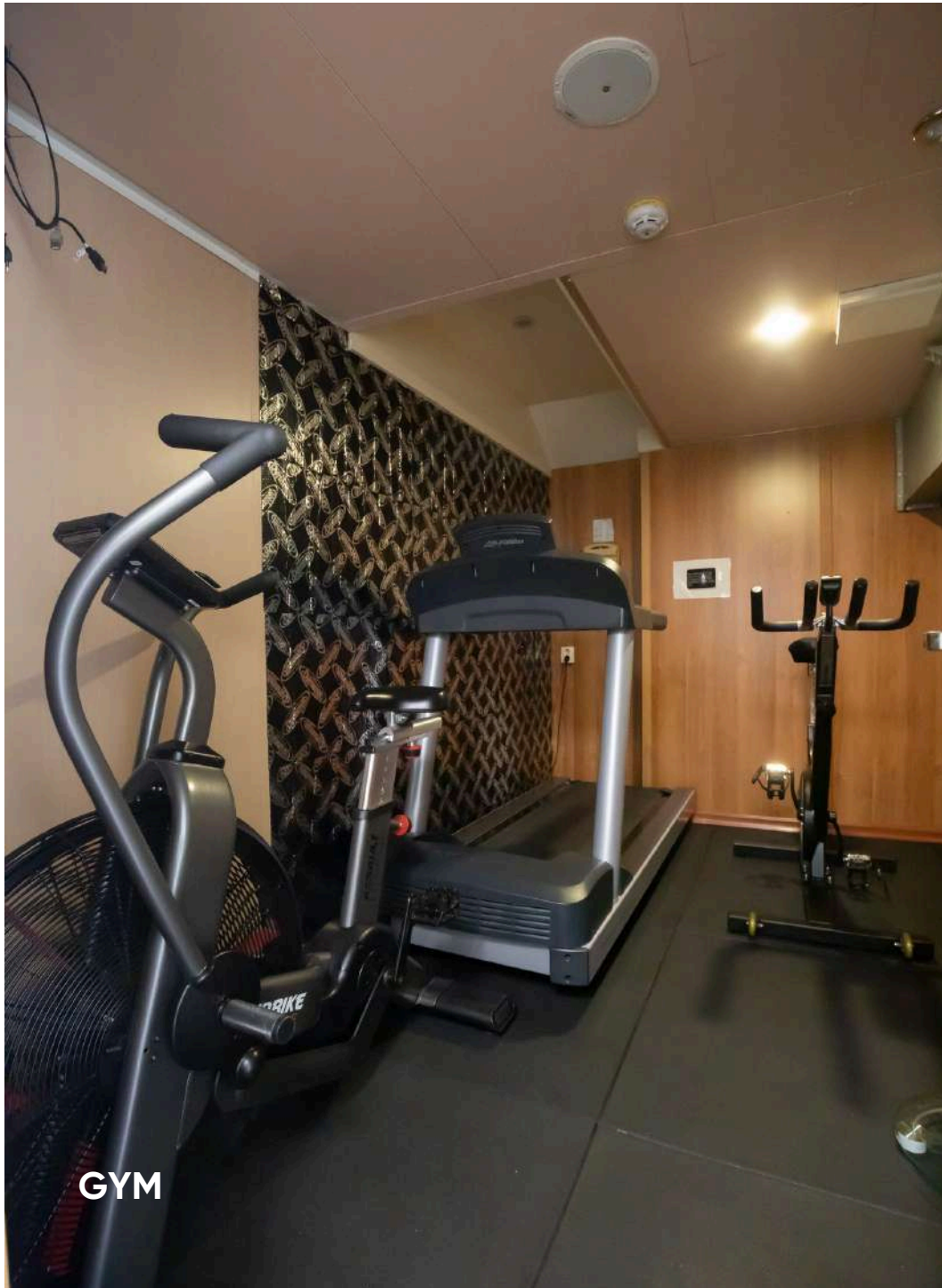




CREW SNUG







GYM



CREW CABIN







GALLEY





LAUNDRY



FREEZER ROOM







ENGINE ROOM







ECR







SWITCHBOARDS





CHEMICAL STORAGE







ER STORAGE







WORKSHOP





# YACHT SPECIFICATIONS

## MAIN SPECIFICATIONS

<b>Flag</b>	Cyprus
<b>LOA</b>	89.39m
<b>Beam</b>	22.6m (Ship breadth 13.4m)
<b>Draft</b>	4.1m
<b>Gross Tonnage</b>	1,728 GT
<b>Year Built</b>	1999
<b>Builder</b>	Stoczina Polnocna
<b>Naval Architect</b>	Stoczina Polnocna
<b>Hull Configuration</b>	Full Displacement
<b>Hull material</b>	Steel
<b>Superstructure</b>	Steel
<b>Decks</b>	4 external
<b>Classification</b>	DNV A1. SPS 50 CoNotation, DPA, Dangerous Cargo Notation, Helideck certified to CA 437

## ACCOMODATION

<b>Crew Cabins</b>	26
<b>Crew berths</b>	59
<b>Arrangement</b>	
<b>Bridge Deck</b>	
	1 Captain Cabin: 1 person
	1 Chief Officer Cabin: 1 person
<b>Superstructure Deck</b>	
	1 Chief Eng Cabin: 1 person
	1 Senior Officer Cabin: 2 persons
	1 Officer Cabin: 4 persons
	3 Officer Cabins: 2 persons
<b>Boat Deck</b>	
	4 Crew Cabins: 2 persons
	2 Crew Cabins: 4 persons
<b>Main Deck</b>	
	10 Crew Cabins: 2 persons
	2 Crew Cabins: 4 persons
	Total: 12 crew cabins for 6 persons

## MACHINERY

### Main Engines

2 x Wartsila model: 8L20, 12V32, 1,329 kW each connected to single CPP propeller

### Shaft Generators

2 x 1,100 kW each

### Engines Hours

Total port engine hours: 68,717 June 2025

Total stb. Engine hours: 69,085 June 2025

### Propellers

1 X CPP

### Consumptions

Consumption at maximum speed 14 m<sup>3</sup> per 24 hrs

Consumption at cruising speed 12 m<sup>3</sup> per 24 hrs

Consumption at economical speed 10.5 m<sup>3</sup> per 24 hrs

Consumption at DP 4-5 m<sup>3</sup> per 24 hrs

### Speeds

Maximum speed 14 kts

Cruising speed 13 kts

Economical speed 12.5 kts

### Range

Range at cruising speed 13,000+nm





# YACHT SPECIFICATIONS

## AUXILIARY MACHINERY & ELECTRICAL SYSTEM

### Main Generators

2 x Wartsila 1,240kW each  
Total port gen hours: 58,451 June 2025  
Total stbd gen hours: 61,532 June 2025

1 harbour generator CAT 3306 184kW  
1 emergency generator CAT 3306 184kW

### Electric Power

Total power is 4,700kW of 440V @ 60 hz

## ANCILLARY EQUIPMENT

### Bow Thruster

1 x Brunvoll Tunnel 600kW  
1 x Brunvoll Retractable Azimut 710kW

### Stern Thruster

2 x Brunvoll Tunnel 450kW each

### Stabilisers

Active anti-heel tanks

## NAVIGATION EQUIPMENT

<b>ECDIS</b>	Wartsila Sam Platinum
<b>Radars</b>	Wartsila Sam Platinum X and S Band
<b>AIS</b>	SAAB R5 Supreme
<b>Gyro Compass</b>	1 SIMRAD GC-80 Dual gyro system MKII and 1 SIMRAD GCV-80 gyro system MKII
<b>Auto Pilot</b>	Anschutz Track Pilot (Heading Course model & Track mode)
<b>Navex</b>	Furuno NX-700
<b>Doppler Log</b>	EM-LOG SAM 4642
<b>GPS</b>	SAAB R5

## TANK CAPACITIES (approximate)

<b>Fuel Capacity in liters</b>	509,510
<b>Water Capacity</b>	255,600
<b>Clean Lub Oil</b>	11,600
<b>Dirty Lub Oil</b>	6,800
<b>Black Water</b>	15,400
<b>Tender Gasoline</b>	9,000
<b>JET A1</b>	9,000

## COMMUNICATION EQUIPMENT

<b>Radio Transceiver</b>	Sailor 6222
<b>DSC Decoders</b>	Sailor 6222
<b>VHF</b>	3 x Sailor
<b>Internet</b>	V-SAT PEP Wave Starlink 5G Antenne

## DOMESTIC EQUIPMENT

- Fully Equipped Galley and Pantry
- Fully Equipped Laundry

## TENDERS & WATER TOYS EQUIPMENT

Tender





# YACHT SPECIFICATIONS

## DECK EQUIPMENT

<b>Deck Loading</b>	57 / m <sup>2</sup>
<b>Deck Area</b>	430 m <sup>2</sup> Clear Deck (13 x 33m)
<b>Under Deck Hold</b>	84 m <sup>2</sup> (7m x 12m with 2.70m height)
<b>Anchors</b>	2 x 1,520kg bower anchors
<b>Chain length</b>	2 x 275m 34mm chain
<b>Hydramarine Knuckle</b>	Starboard Aft
<b>Boom Crane</b>	SWL 30T @ 10m SWL 20T @ 15m SWL 12T @ 20m
<b>Hydramarine Stiff</b>	Port Midships
<b>Boom Crane</b>	SWL 15T @ 10m SWL 10T @ 15m

## CREW / ADDITIONAL FACILITIES

- Exterior gym on Top Deck
- Interior cardio gym
- Hospital
- Recreation Room
- Laundry
- Jacuzzi
- Sauna

## WORK LIST / REFIT

### 2016-2017 refit

Addition of helideck and BWTP. Docking and AF. New chilled water AC system installed (Heinen and Hopman). New dedicated "guest" cold rooms installed below deck. Addition of ROV A-Frame and support facilities for Submarine

### 2018 refit

Major refurbishment of accommodation and galley. Docking and AF. Rebuild of 30t crane, including new boom bushes. Same for 10t crane

### 2019

Upgrade of bridge Navionics to Wartsila NACOS system.

### 2020

Special survey. Forward void space between retractable thruster and FW tank cut out and rebuilt completely while vessel was in dock.

### 2021

New sewage treatment plant installed, new fridge compressors installed in forward technical space. Crew messroom fully retrofitted.

### 2022

Retrofit of new davit and FRC (both bespoke units built by Fasmer GMBH)

### 2023

Installation of bespoke IMENCO JET A1 and gasoline dispensing systems. Hull water blasted back to bare steel along with foredeck.

### 2024

Windlasses removed and fully rebuilt. Corrosion issues address on funnels and uptakes. Galley ventilation upgraded

### 2025

Special survey. Crane maintenance carried out according to special survey requirements, UTM and all other special survey tasks completed.

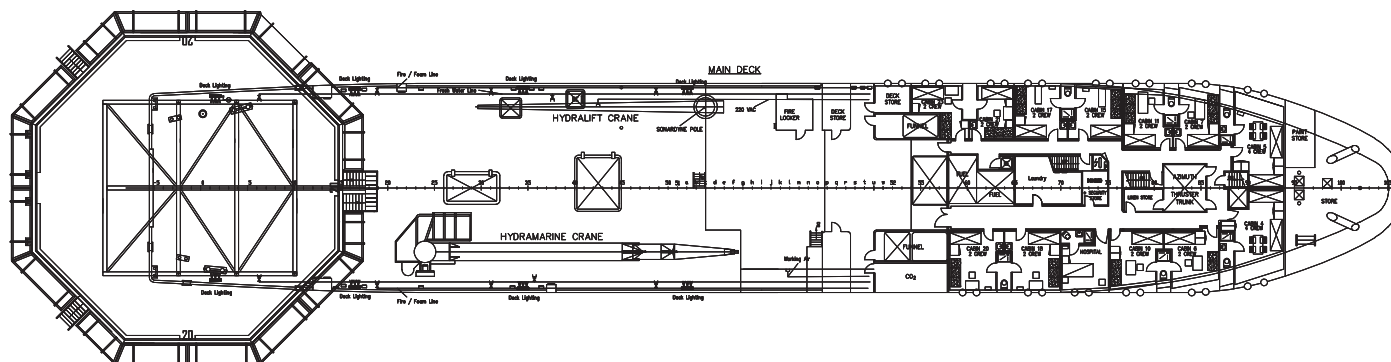
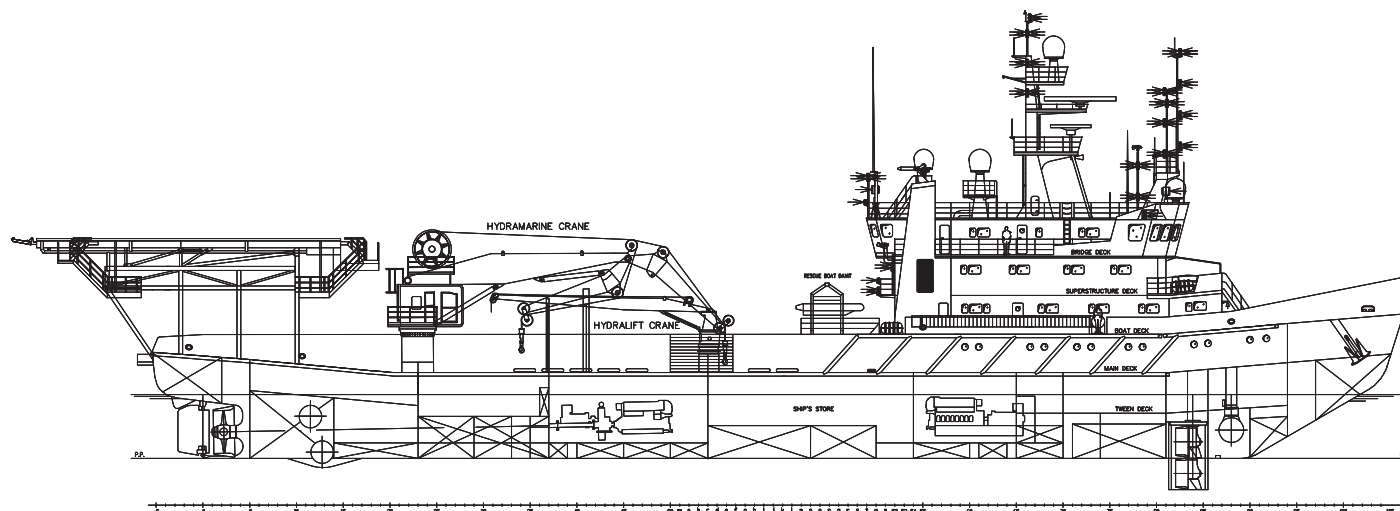
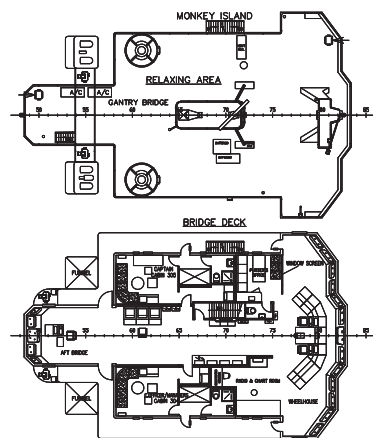
## EXCLUSIONS

Items or equipment to be removed from the vessel when sold.





# GENERAL ARRANGEMENT

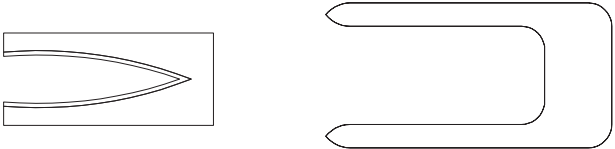
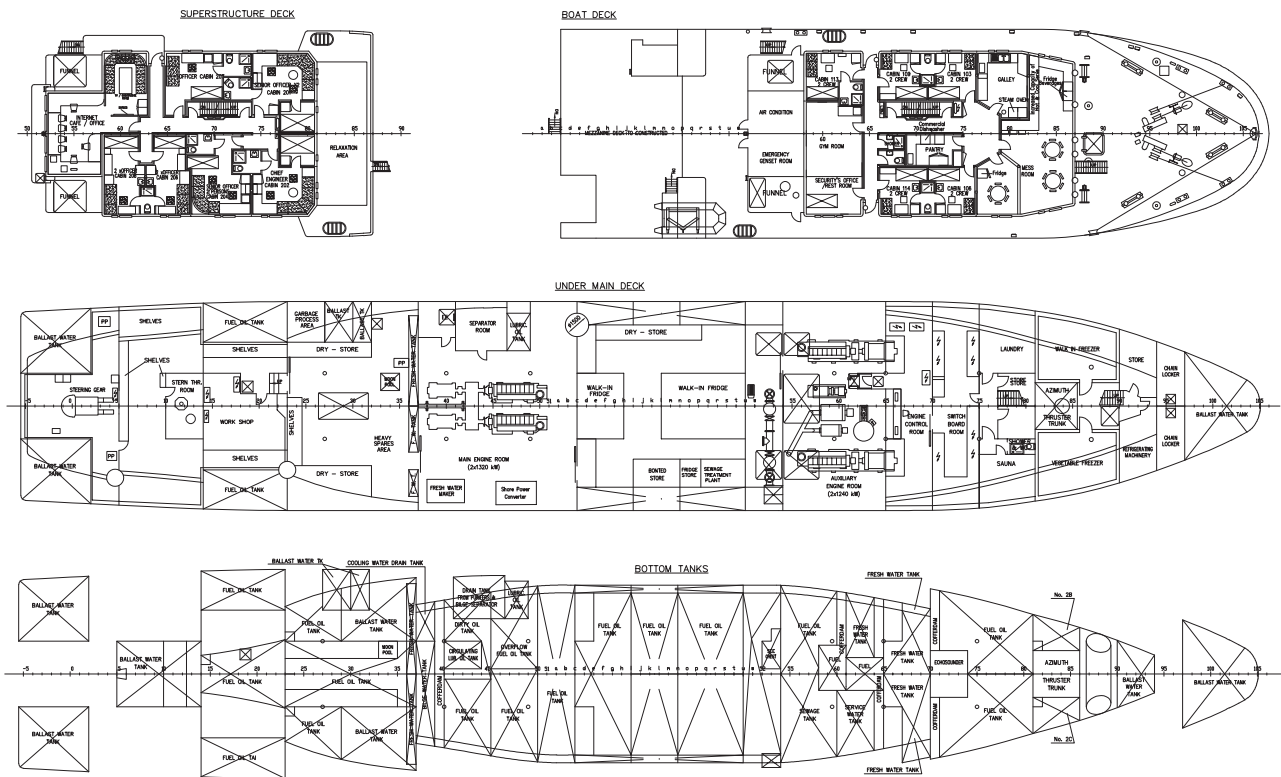


These particulars have been prepared from information provided by the sellers and are intended as a general guide to the vessel. We cannot, however, be liable for any inaccuracy. It is up to the purchaser to confirm details of concern to him by survey, inspection and/or enquiry of the seller and to ensure that the purchase contract properly reflects his concern and specific details upon which he may rely. We always advise an independent survey.





# GENERAL ARRANGEMENT



## MAIN PARTICULARS

LENGTH OVERALL	Loa	89.39	m
LENGTH BETWEEN PERPENDICULARS	Lbp	74.558	m
BREADTH, MLD	B	13.4	m
BEAM OVERALL	Boa	22.60	m
DEPTH TO BOAT DECK	H	18.0	m
DEPTH TO MAIN DECK	H <sub>2</sub>	5.5/5.23	m
DRAUGHT	T	4.1	m
MAIN ENGINE 2 x WARTSILA 8 L20	Ne	1300	kW
	n	1000	rpm
SPEED	V	14	knots

21/08/2017

Designed by	Int. Z. Sulewski	17.06.99	
Drawn by	Int. Z. Sulewski	17.06.99	
Issued by	Int. J. Pietrzak		
Checked by	S. Piatkowski	21.10.04	
Object:	Name	Date	Signature
Scale	1:100		
Size	A0		
Project:	GENERAL ARRANGEMENT		
Draw No:	011-01		
Replace draw Rec:	A, B		
Rec:	A, B, C		
Project:			
Draw No:	011-01		
Sheets	1		
Sheet	1		

These particulars have been prepared from information provided by the sellers and are intended as a general guide to the vessel. We cannot, however, be liable for any inaccuracy. It is up to the purchaser to confirm details of concern to him by survey, inspection and/or enquiry of the seller and to ensure that the purchase contract properly reflects his concern and specific details upon which he may rely. We always advise an independent survey.





## CONTACT

Sam Tucker  
Sales Broker

+44 7548 765 406  
sam.tucker@moraviayachting.mc  
moraviayachting.mc

While every effort has been made to ensure that the information contained in this document is accurate as at the date of production, the accuracy of such information cannot be guaranteed. Moravia Yachting gives no representation, warranty or undertaking, express or implied, as to: the accuracy, reliability, completeness or reasonableness of the information contained in this document; the condition of a featured yacht and/or its equipment; the seaworthiness of a featured yacht; or the suitability and/or availability of a featured yacht for purchase or charter. The fees, specifications, figures, images and comments included in this document are subject to change without notice. This document has been produced by Moravia Yachting at the request of the person identified on the front cover for discussion purposes only and is confidential. This document must not be copied or distributed to any third party, in whole or part, without Moravia Yachting's express written permission. Moravia Yachting hereby expressly excludes any liability howsoever arising in respect of any inaccuracies or errors in the information contained in this document, to the fullest extent permitted by law.

 A Hill Robinson company

  
**Moravia**  
YACHTING