



PROJECT NEON

For Sale

Builder	Astra Nord
Year	42 months delivery
LOA	78.0m
Beam	13.0m
Draft	3.8m
GT	2,200
Cabins	9
Guests	18
Speed	14.8/16.6 Knots
Price	POA



Moravia
YACHTING















YACHT SPECIFICATIONS

DIMENSIONS

Length	78.0m
Beam	13.0m
Draft	3.8m
Gross Tonnage	2,200
Delivery	42 months
Builder	Astra Nord
Naval Architect	Lateral Naval Architects
Interior Designer	T. Fotiadis Design
Exterior Designer	T. Fotiadis Design
Classification	Lloyds Register SSC

ACCOMODATION

Guest Cabins	9
Guest Berths	18
Arrangement	1x owner's cabin, 8x guests cabins
Crew Cabins	13
Crew Berths	26
Arrangement	12x double cabins, 1x double cabin for the Captain and First Officer

MACHINERY

Main Engine	2 x MTU 16V 2000 M72 1,368 ekW Variable speed
Batteries	3.25 MWh
Pods	2 x 1350 kW
Maximum speed	16.6 Knots
Cruising speed	14.8 Knots
Range speed	11.5 Knots
Range at cruising speed	6,200nm @11.5 Knots

ANCILLARY EQUIPMENT

Bow Thruster	1 x 330 kW
---------------------	------------

AMENITIES

- 1x Exterior Pool
- Spa with sauna
- Massage room
- Gym
- Relaxation area
- Cinema
- Helideck

These particulars have been prepared from information provided by the sellers and are intended as a general guide to the vessel. We cannot, however, be liable for any inaccuracy. It is up to the purchaser to confirm details of concern to him by survey, inspection and/or enquiry of the seller and to ensure that the purchase contract properly reflects his concern and specific details upon which he may rely. We always advise an independent survey.



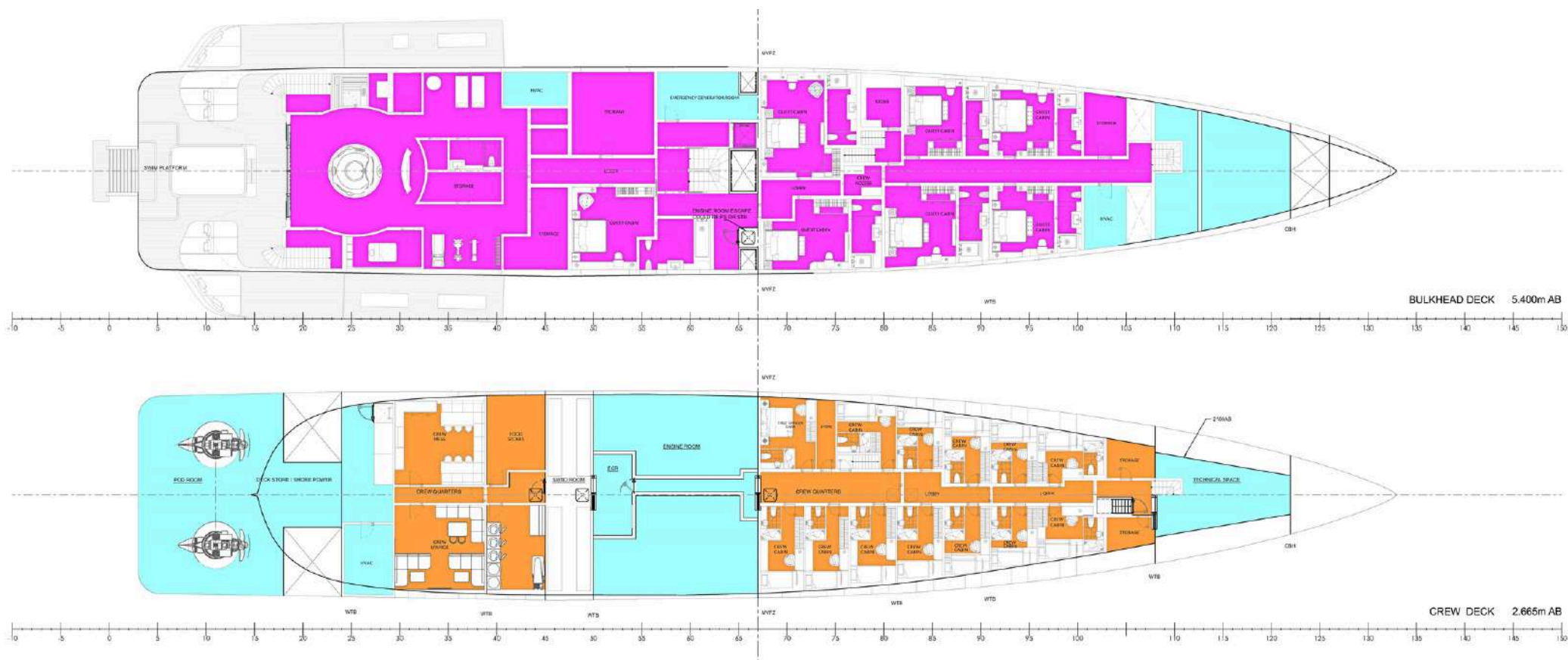
GENERAL ARRANGEMENT



These particulars have been prepared from information provided by the sellers and are intended as a general guide to the vessel. We cannot, however, be liable for any inaccuracy. It is up to the purchaser to confirm details of concern to him by survey, inspection and/or enquiry of the seller and to ensure that the purchase contract properly reflects his concern and specific details upon which he may rely. We always advise an independent survey.



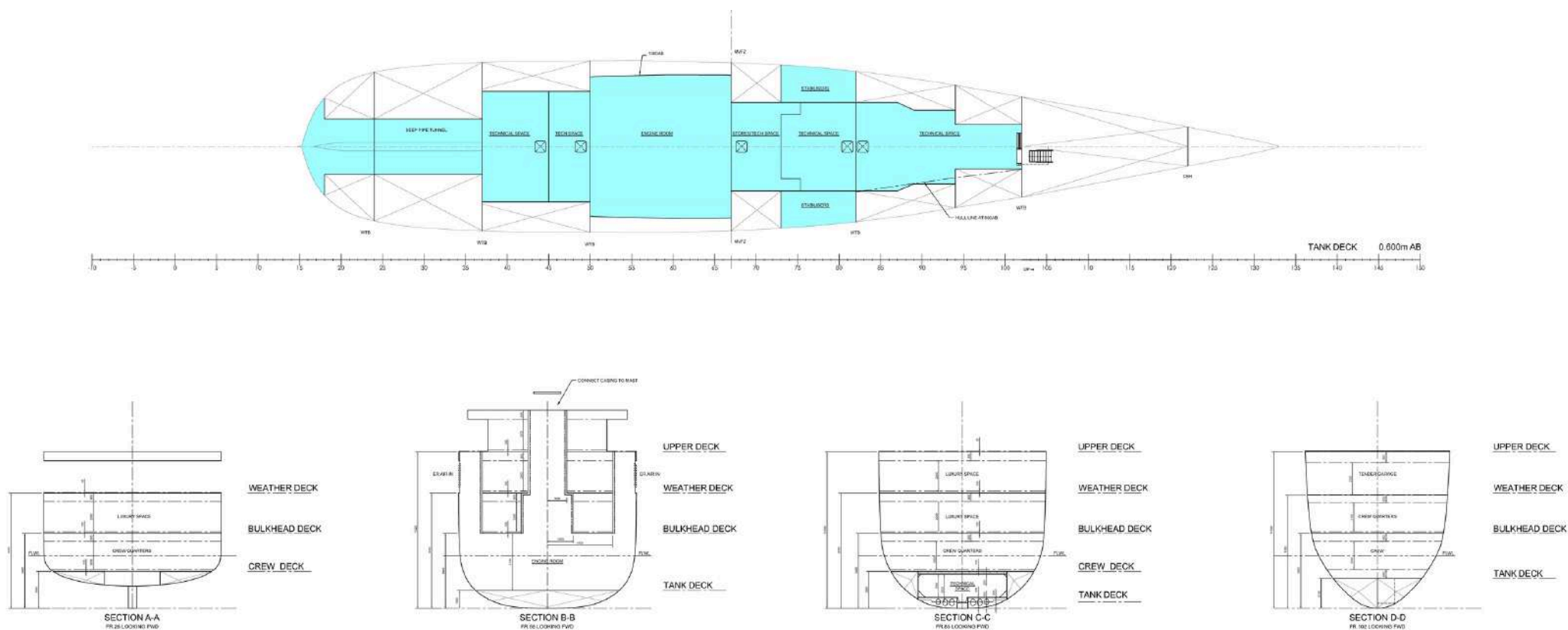
GENERAL ARRANGEMENT



These particulars have been prepared from information provided by the sellers and are intended as a general guide to the vessel. We cannot, however, be liable for any inaccuracy. It is up to the purchaser to confirm details of concern to him by survey, inspection and/or enquiry of the seller and to ensure that the purchase contract properly reflects his concern and specific details upon which he may rely. We always advise an independent survey.



GENERAL ARRANGEMENT



These particulars have been prepared from information provided by the sellers and are intended as a general guide to the vessel. We cannot, however, be liable for any inaccuracy. It is up to the purchaser to confirm details of concern to him by survey, inspection and/or enquiry of the seller and to ensure that the purchase contract properly reflects his concern and specific details upon which he may rely. We always advise an independent survey.



CONTACT

Adam Papadakis
Head of Sales / Senior Sales Broker

+377 6 78 63 39 60
adam.papadakis@moraviayachting.mc
moraviayachting.mc



While every effort has been made to ensure that the information contained in this document is accurate as at the date of production, the accuracy of such information cannot be guaranteed. Moravia Yachting gives no representation, warranty or undertaking, express or implied, as to: the accuracy, reliability, completeness or reasonableness of the information contained in this document; the condition of a featured yacht and/or its equipment; the seaworthiness of a featured yacht; or the suitability and/or availability of a featured yacht for purchase or charter. The fees, specifications, figures, images and comments included in this document are subject to change without notice. This document has been produced by Moravia Yachting at the request of the person identified on the front cover for discussion purposes only and is confidential. This document must not be copied or distributed to any third party, in whole or part, without Moravia Yachting's express written permission. Moravia Yachting hereby expressly excludes any liability howsoever arising in respect of any inaccuracies or errors in the information contained in this document, to the fullest extent permitted by law.

 A Hill Robinson company


Moravia
YACHTING