



SILVER BREEZE

For Sale

Builder	Riva
Year/Refit	2010/2023
LOA	26.39m (86')
Beam	6.20m (20')
Draft	1.8m (6')
Cabins	4
Guests	8
Cruising Speed	25 Knots
Maximum Speed	38 Knots
Price	€2,700,000 Ex. VAT

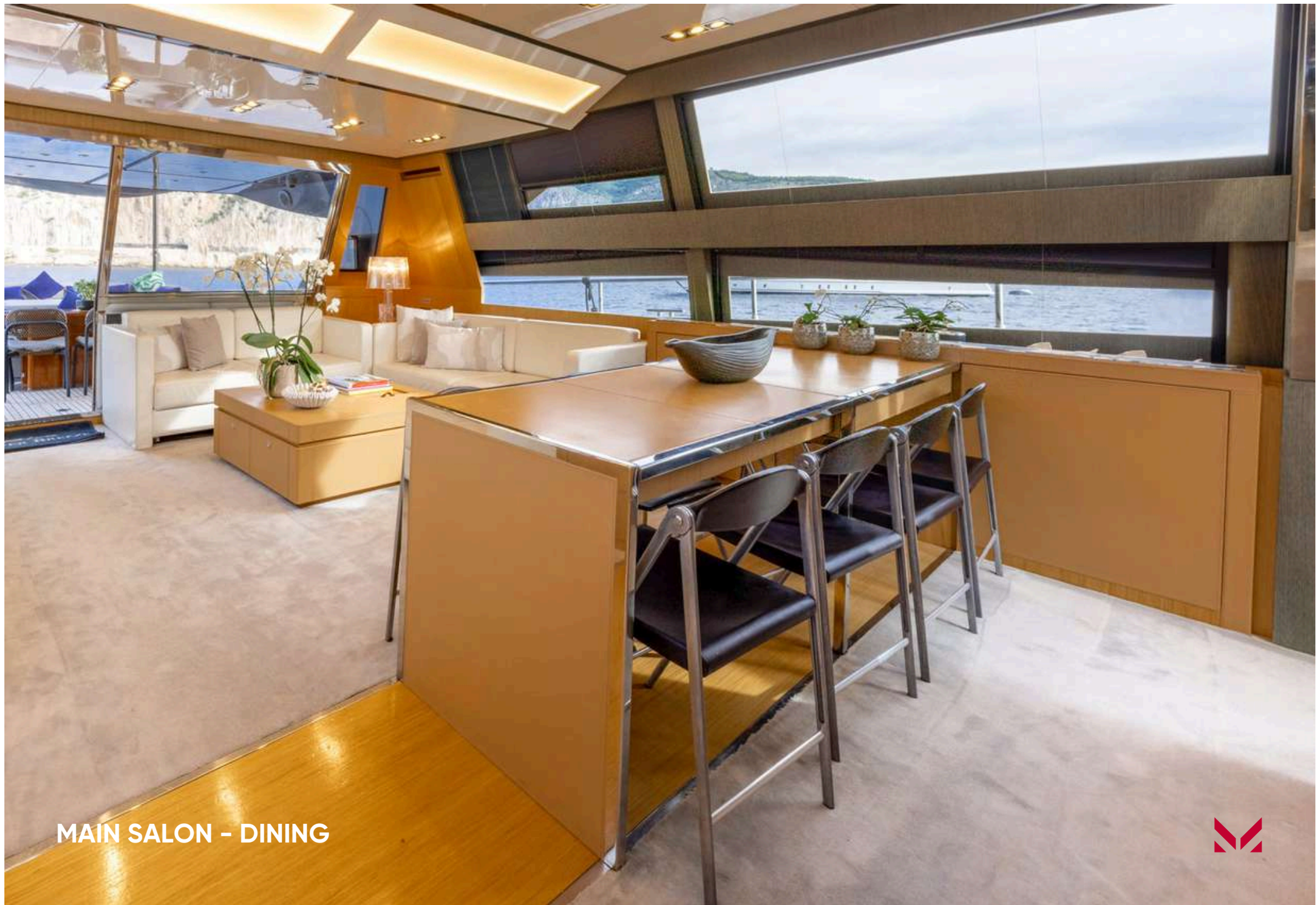






MAIN SALON





MAIN SALON - DINING





STAIRS - DAY HEAD





MASTER STATEROOM





MASTER STATEROOM





MASTER STATEROOM - EN SUITE





VIP STATEROOM





DOUBLE STATEROOM





TWIN STATEROOM





MAIN DECK





MAIN DECK





FLY BRIDGE





FORWARD DECK LOUNGE

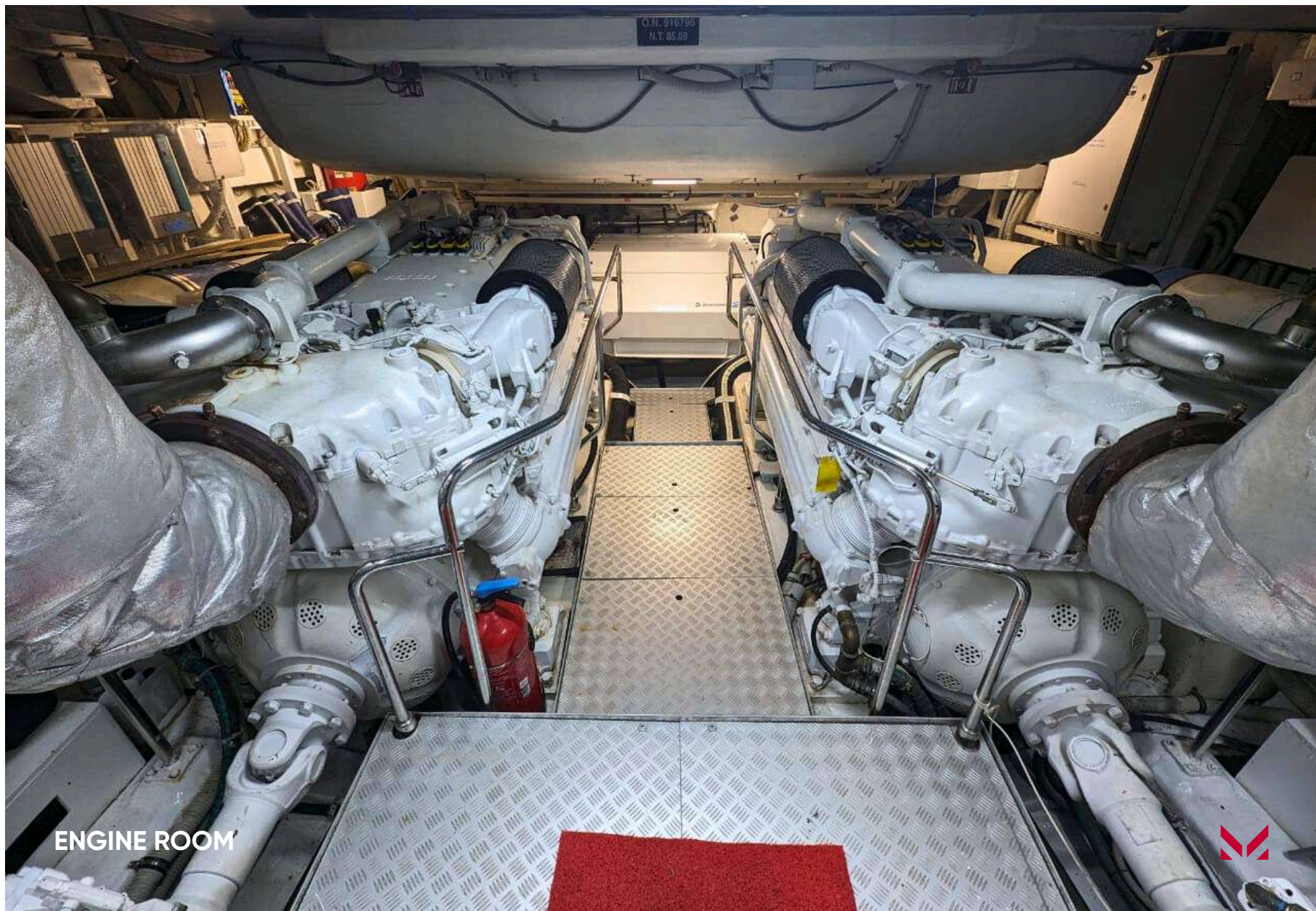




BRIDGE



GALLEY



ENGINE ROOM



YACHT SPECIFICATIONS

MAIN SPECIFICATIONS

Length	26.39m (86')
Beam	6.20m (20")
Draft	1.8m (6")
Gross Tonnage	94
Year Built/Refit	2010/2023
Builder	Riva
Model	Domino 86
Naval Architect	Riva
Interior Designer	Officina Italiana Design
Exterior Designer	Mauro Micheli
Hull Construction	GRP
Superstructure	GRP
Classification	Rina - Commercial
Flag	UK

ACCOMMODATION

Guest Cabins	4
Guests Berths	8
Arrangement	1x Master cabin Full beam, 1x VIP cabin, 1x Double cabin, 1x Twin cabin
Crew Berths	4
Crew Cabins	2x double

MACHINERY

Main Engine	2x MTU 16V 2000 M93
Manufacturer	MTU
Total port engine hours	2,215 (Oct '25)
Total stb. engine hours	2,262 (Oct '25)
Maximum speed	38 Knots
Cruising speed	25 Knots
Range	335 nm
Main Generator	2 x ONAN (27 kW & 20 kW)
Generator hours port:	8,657 (Oct '25)
Generator hours stb.:	6,628 (Oct '25)

TANK CAPACITY (approximate)

Fuel capacity	7,500 L
Fuel consumption	410L @20knots / 540L @25knots
Water Capacity	900 L
Black Water	370 L

ANCILLARY EQUIPMENT

Steering System	BCS Electro-hydraulic system
Bow Thruster	Hydraulic ABT Trac 40 Hp
Stern Thruster	Hydraulic ABT Trac 20 Hp
Trim tabs	Hydraulic flaps
Stabilisers	SEAKEEPER SK26 zero speed and underway gyroscopic stabilizer (2022)
Bilge/Fire Pump	Electric automatic + Manual pumps
Boilers	2x 79.5 L
Watermarker	Idromar 178 L/h
Heating	Integrated via reversible A/C system
Air Conditioning	Condaria 144,000 BTU reversible system with double chiller in all cabins

SAFETY & SECURITY EQUIPMENT

- Fume/Gas detectors
- Engine alarms
- Bilge alarm
- Life rafts
- Draining system
- Fire extinguishing system
- Horn

These particulars have been prepared from information provided by the sellers and are intended as a general guide to the vessel. We cannot, however, be liable for any inaccuracy. It is up to the purchaser to confirm details of concern to him by survey, inspection and/or enquiry of the seller and to ensure that the purchase contract properly reflects his concern and specific details upon which he may rely. We always advise an independent survey.



YACHT SPECIFICATIONS

NAVIGATION EQUIPMENT

Magnetic Compass	Ritchie
Automatic Pilot	Simrad
Echo Sounder	Airmar
Radar	Simrad
Chart Plotter	Simrad
GPS	Furuno Navnet 3D
Wind Instruments	NAVICO NMEA 2000
AIS	NAIS 500 Class B

TENDERS & WATER TOYS EQUIPMENT

- Williams 385 Jet Tender
- Seabob F5 S
- Nautibuoy Platform
- Wake Board
- 2x Inflatable Paddleboards
- Snorkelling Equipment

AUDIO/VISUAL ENTERTAINMENT SYSTEM

- TV sets in saloon (46" Ad NOTAM mirror LCD) and all cabins
- Radio / CD / DVD / MP3 / Blu-Ray players
- BOSE Home theatre
- BOSE Hi-Fi system
- BOSE speakers
- External speakers wired for FOXTEL Stereo system on foredeck, sport bridge and cockpit

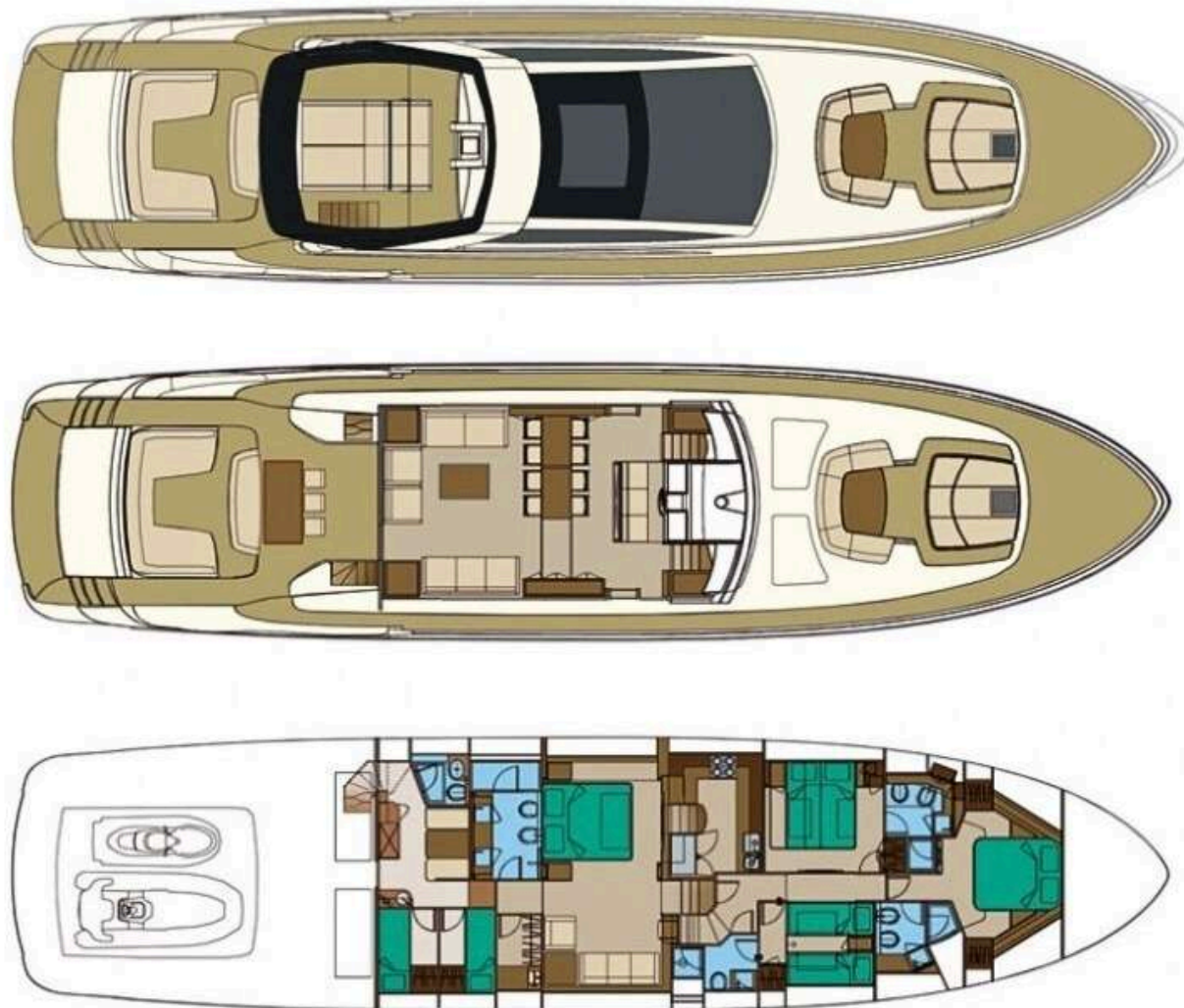
DOMESTIC EQUIPMENT

- Microwave
- Miele 4-burner ceramic hob
- Extractor hood
- Bosch oven
- Gaggenau dual door fridge / deep freezer
- Bosch dishwasher
- Separate mini-fridge
- Deck refrigerator
- Ice maker
- Grill

These particulars have been prepared from information provided by the sellers and are intended as a general guide to the vessel. We cannot, however, be liable for any inaccuracy. It is up to the purchaser to confirm details of concern to him by survey, inspection and/or enquiry of the seller and to ensure that the purchase contract properly reflects his concern and specific details upon which he may rely. We always advise an independent survey.



GENERAL ARRANGEMENT



These particulars have been prepared from information provided by the sellers and are intended as a general guide to the vessel. We cannot, however, be liable for any inaccuracy. It is up to the purchaser to confirm details of concern to him by survey, inspection and/or enquiry of the seller and to ensure that the purchase contract properly reflects his concern and specific details upon which he may rely. We always advise an independent survey.



CONTACT

Alessandro Diomedi
Sales Broker

+377 6 43 91 90 54
alessandro.diomedi@moraviayachting.mc
moraviayachting.mc



While every effort has been made to ensure that the information contained in this document is accurate as at the date of production, the accuracy of such information cannot be guaranteed. Moravia Yachting gives no representation, warranty or undertaking, express or implied, as to; the accuracy, reliability, completeness or reasonableness of the information contained in this document; the condition of a featured yacht and/or its equipment; the seaworthiness of a featured yacht; or the suitability and/or availability of a featured yacht for purchase or charter. The fees, specifications, figures, images and comments included in this document are subject to change without notice. This document has been produced by Moravia Yachting at the request of the person identified on the front cover for discussion purposes only and is confidential. This document must not be copied or distributed to any third party in whole or part, without Moravia Yachting's express written permission. Moravia Yachting hereby expressly excludes any liability howsoever arising in respect of any inaccuracies or errors in the information contained in this document, to the fullest extent permitted by law.

 A Hill Robinson company


Moravia
YACHTING