



SEVEN SINS

Builder	Sanlorenzo
Year/Refit	2017/2025
LOA	52m (170' 6")
Beam	9.35m (30' 8")
Draft	2.65m (8' 8")
Cabins	5
Guests	11
Cruising Speed	13.5 Knots
Maximum Speed	17 Knots
Price	€25,500,000 Ex VAT









MAIN SALON





MAIN SALON



FOYER





UPPER DECK - DINING & LOUNGE



UPPER DECK - DINING



UPPER DECK - LOUNGE





FOYER





MASTER STATEROOM





MASTER STATEROOM - OFFICE

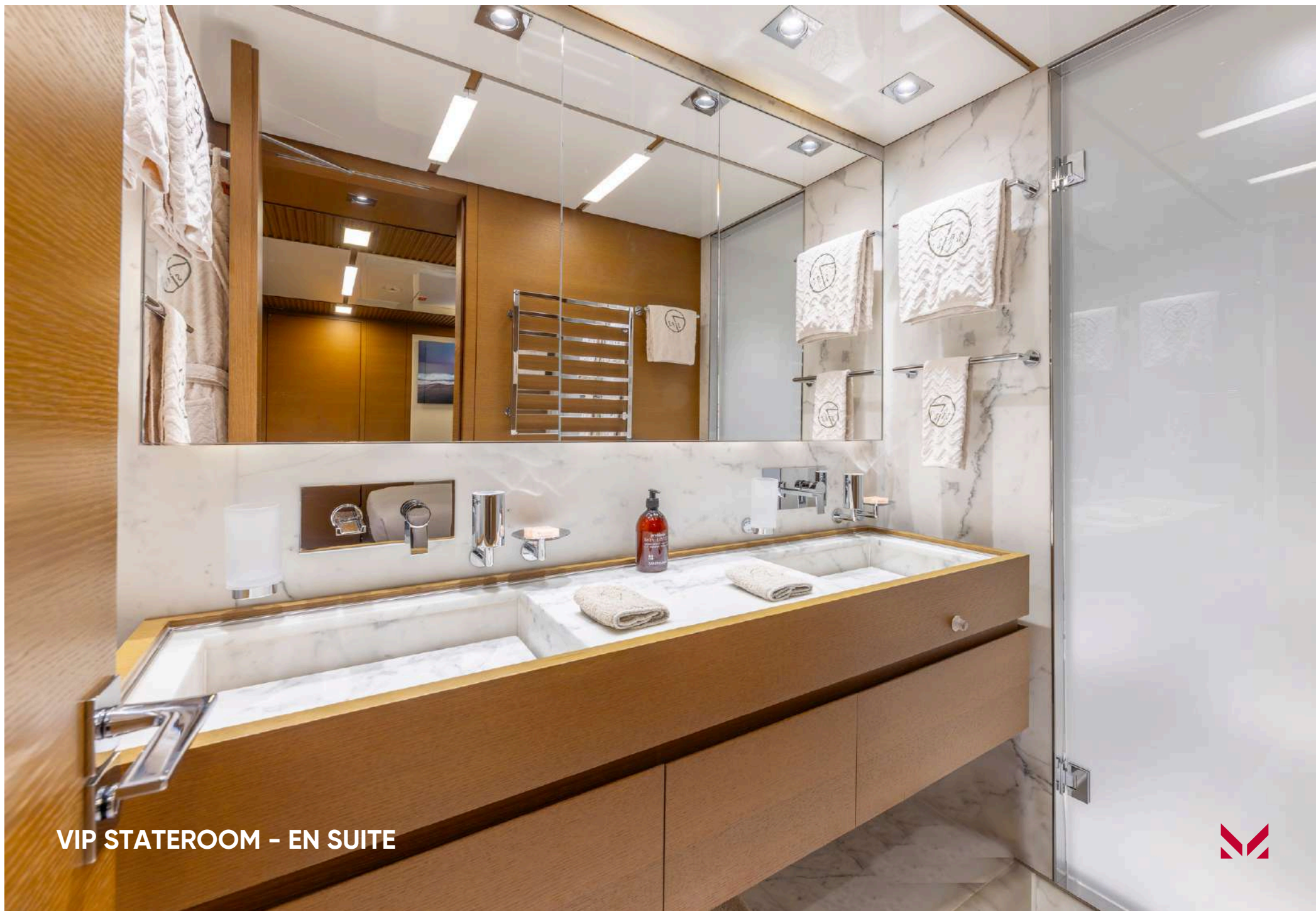




MASTER STATEROOM - EN SUITE



VIP STATEROOM



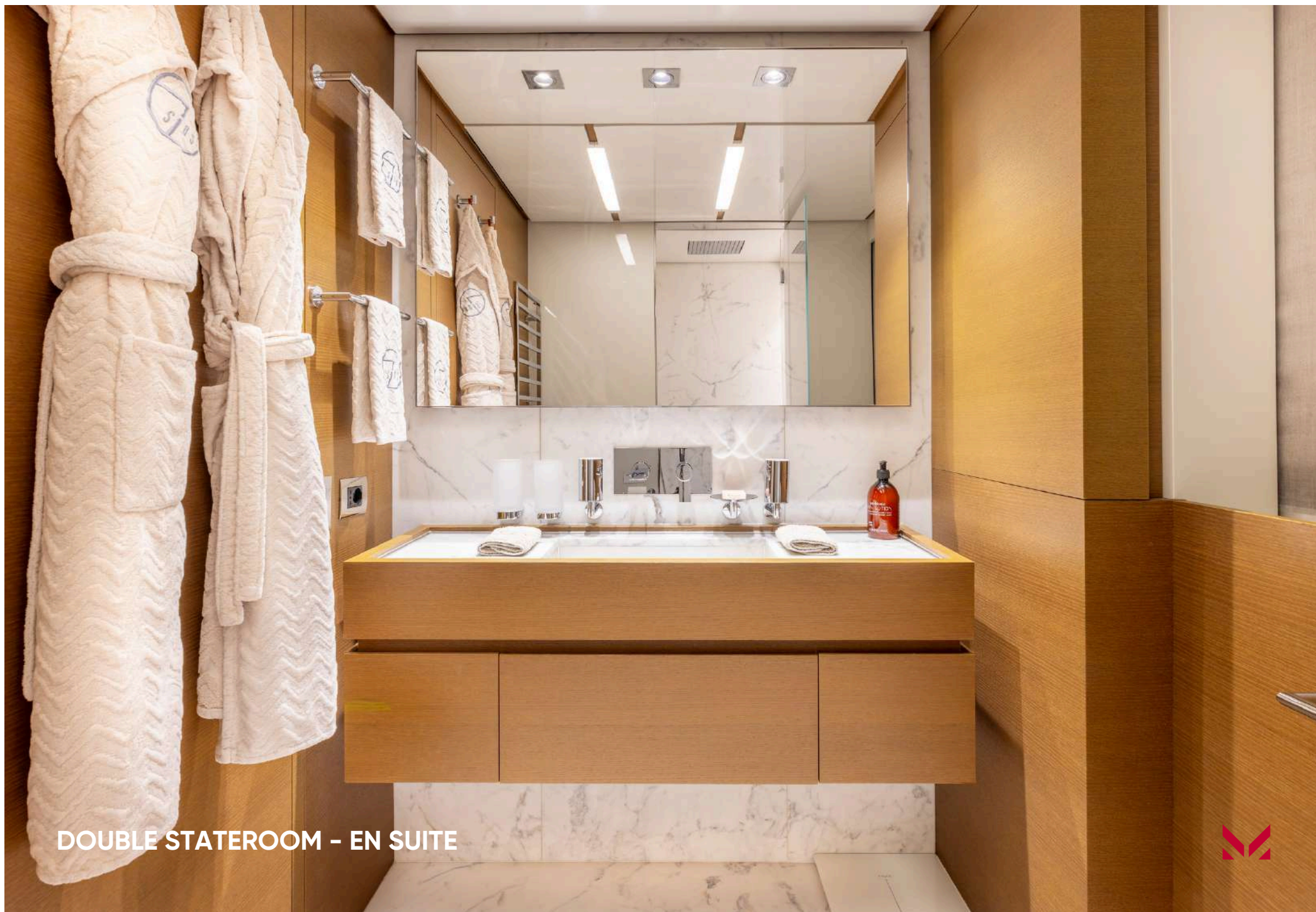
VIP STATEROOM - EN SUITE





DOUBLE STATEROOM





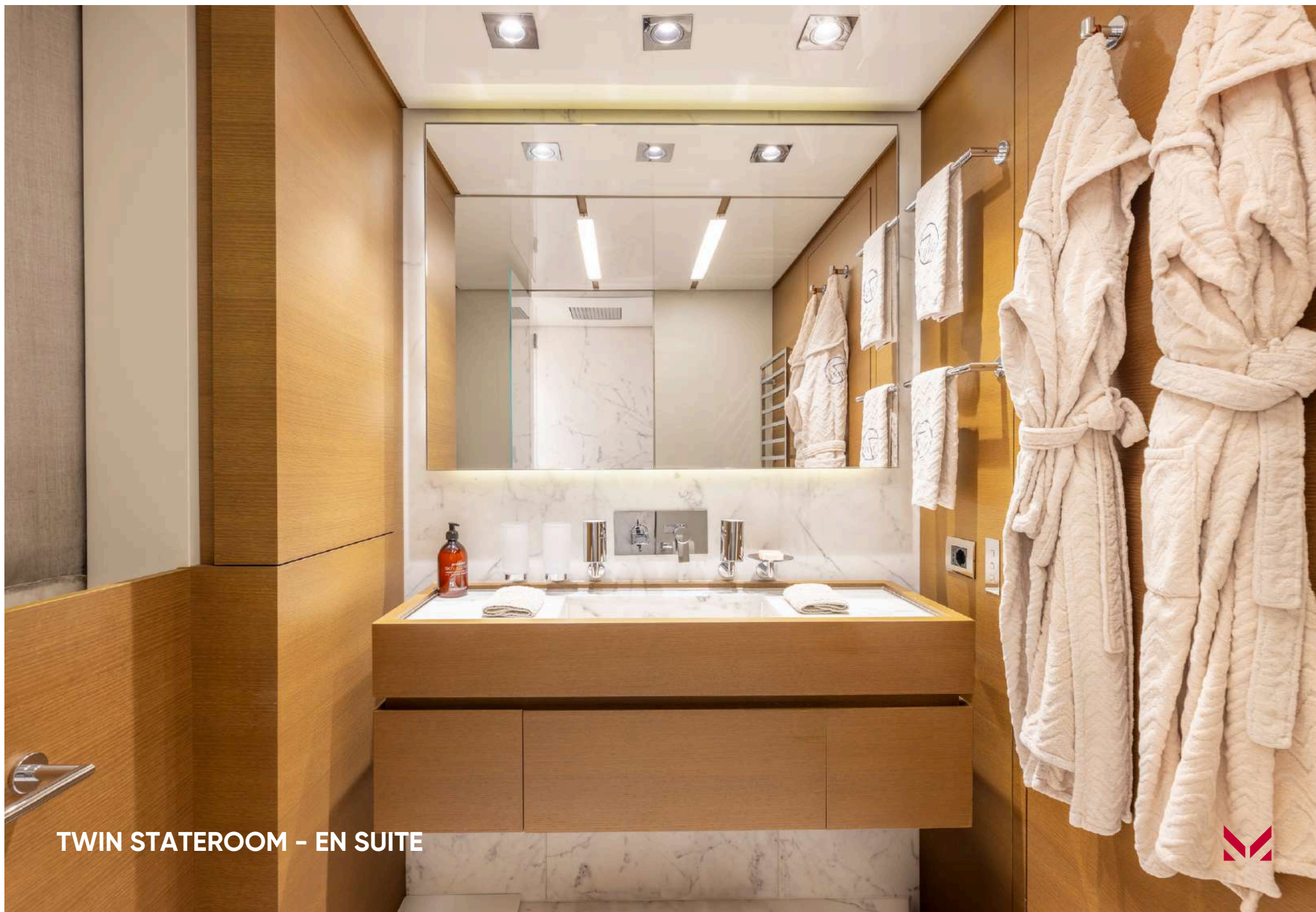
DOUBLE STATEROOM – EN SUITE





TWIN STATEROOM





TWIN STATEROOM - EN SUITE





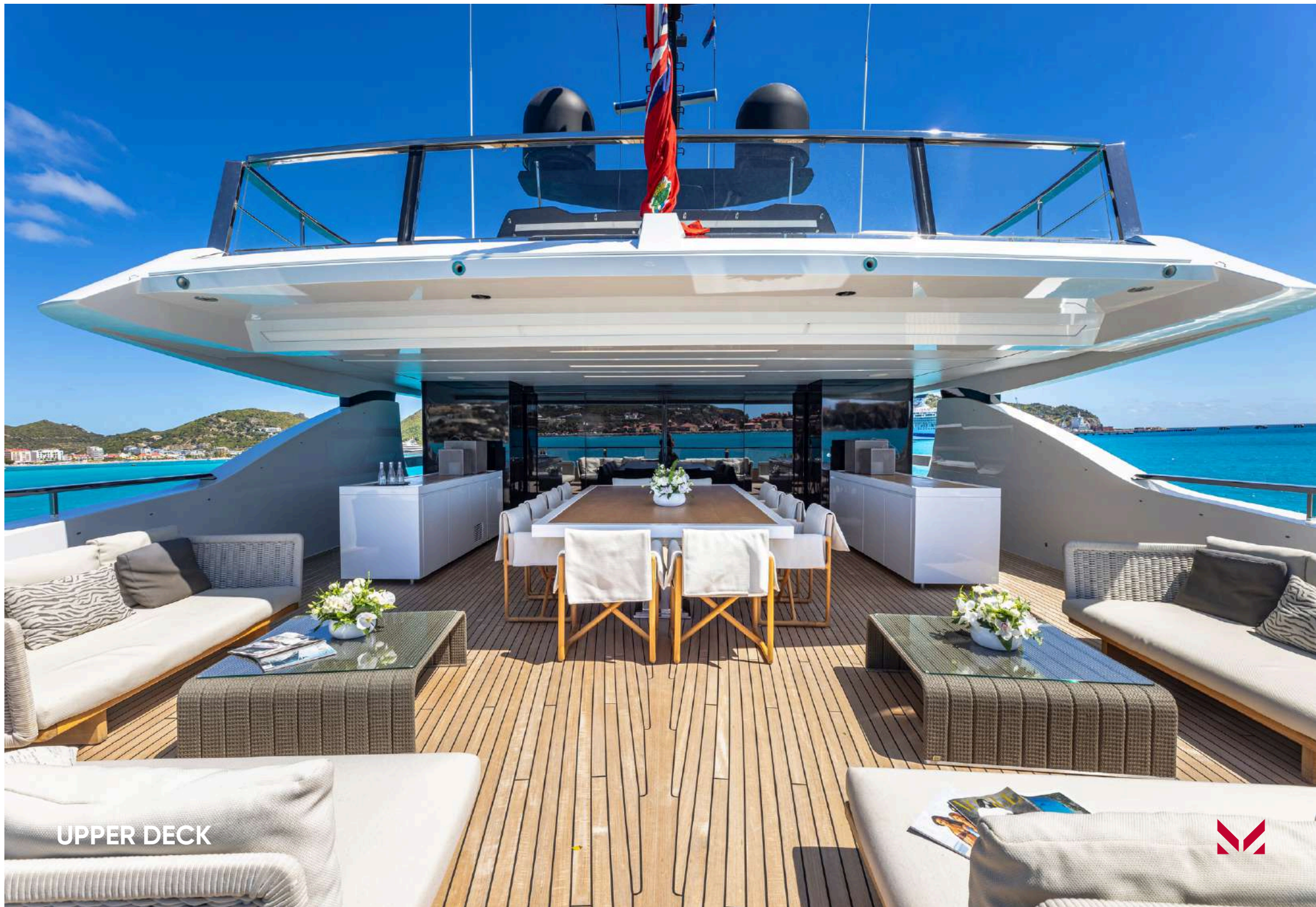
MAIN AFT DECK – POOL





MAIN DECK AFT SEATING





UPPER DECK





SUN DECK – AFT





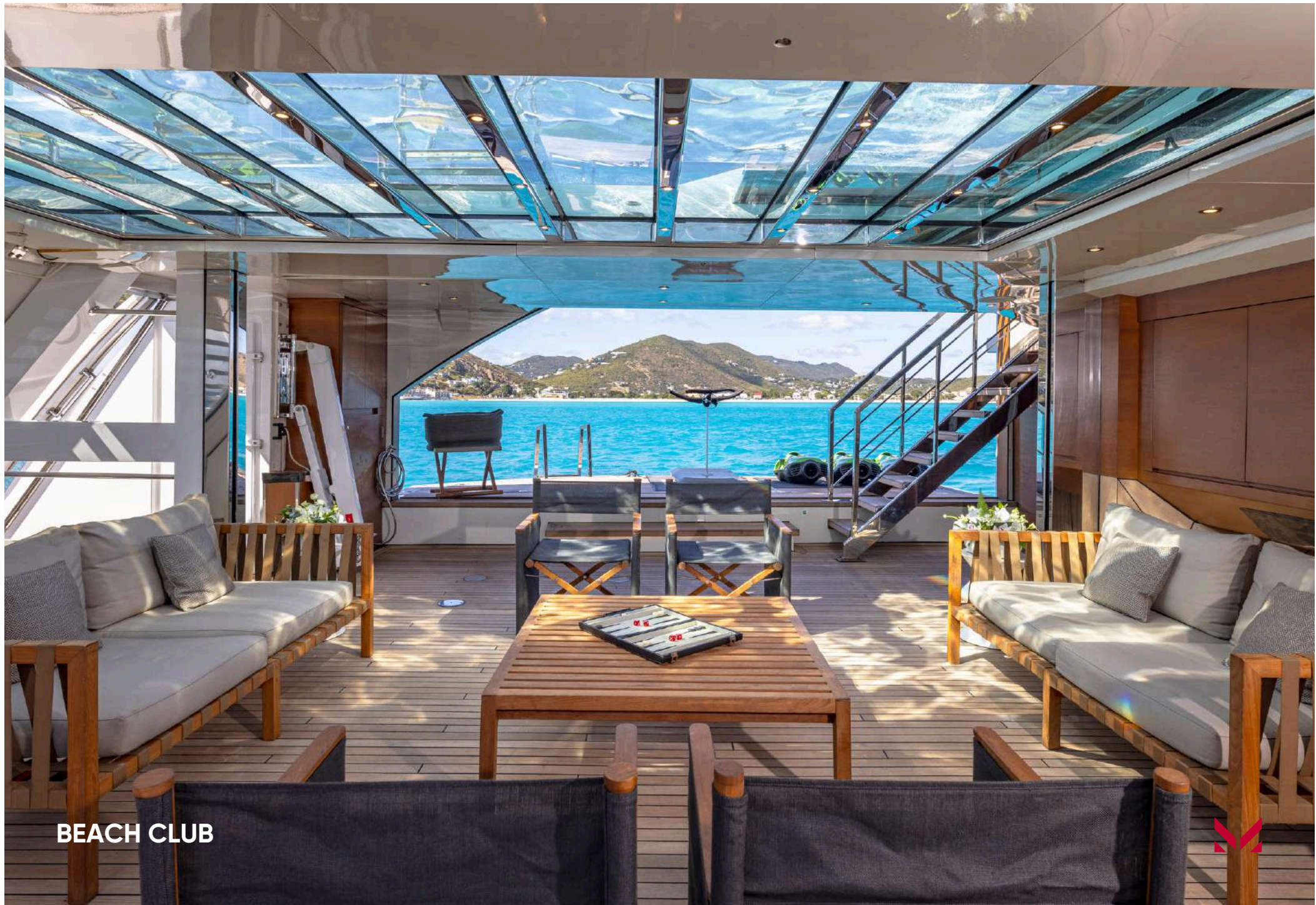
SUN DECK – DINING





SUN DECK - FORWARD





BEACH CLUB



SPA





SPA





SPA



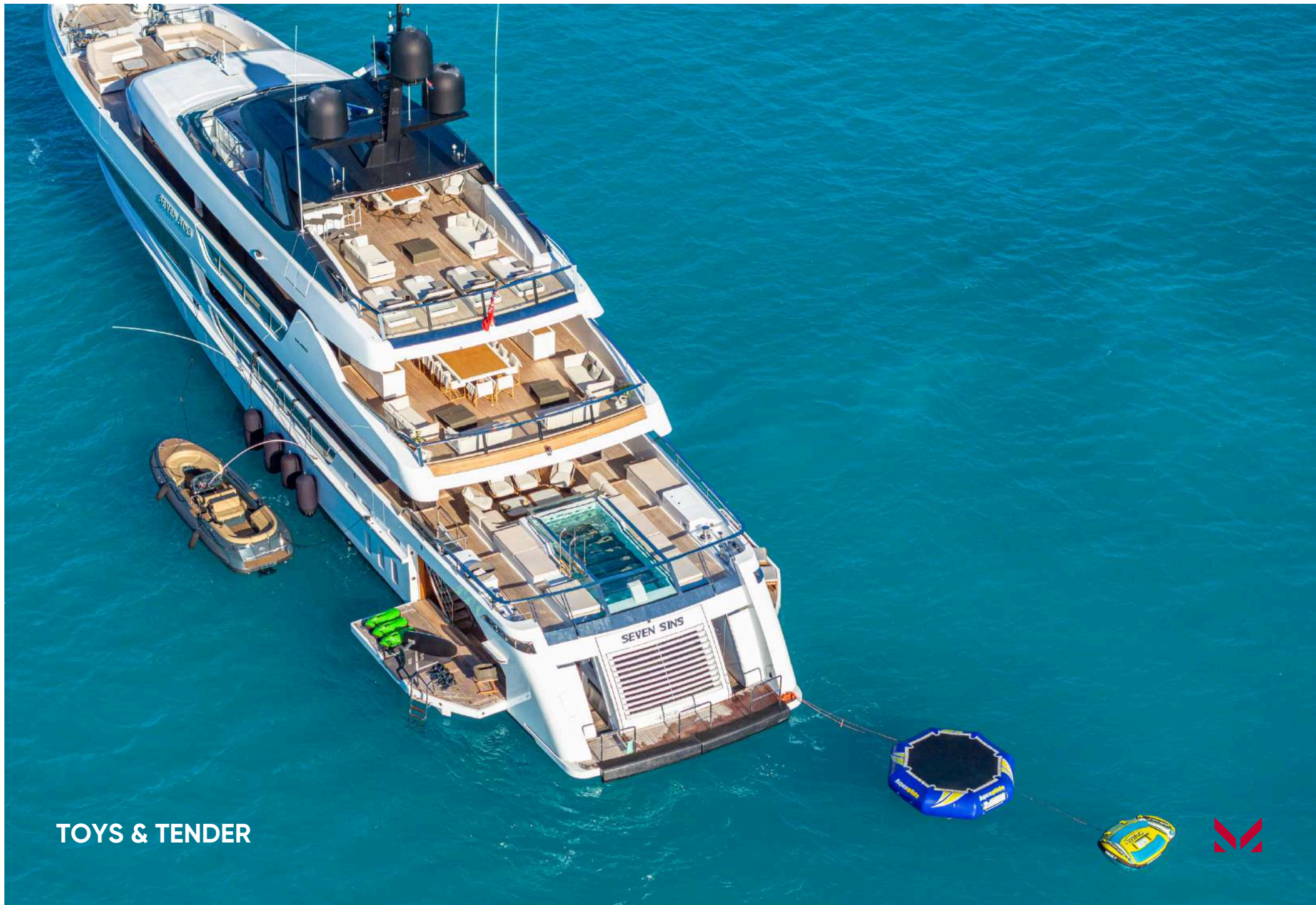
BRIDGE





ENGINE ROOM





TOYS & TENDER





TOYS & TENDER



YACHT SPECIFICATIONS

MAIN SPECIFICATIONS

Length	52m (170' 6")
Beam	9.35m (30' 8")
Draft	2.65m (8' 8")
Gross Tonnage	499
Year/Refit	2017/2025
Builder	Sanlorenzo
Naval Architect	Sanlorenzo
Interior Designer	Officina Italiana Design (Mauro Micheli)
Exterior Designer	Sanlorenzo
Hull Construction	Steel
Superstructure	Aluminium
Classification	ABS
Flag	Cayman Islands

ACCOMMODATION

Guest Cabins	5
Guest Berths	11
Arrangement	x1 Master, x2 VIPs, x1 Double, x1 Twin
Crew Cabins	5 + 1
Crew Berths	10 + Captain

MACHINERY

Main Engine	2x CAT 3512C DITA-SCAC 2,040 hp
Manufacturer	CAT
Total port engine hours	13,923 (Oct 2025)
Total stb. engine hours	13,913 (Oct 2025)
Maximum speed	17.0 Knots
Cruising speed	13.5 Knots
Range	3,000 nm at 13.5 Knots
Main Generator	DG Cat C6.6
Generator hours	50 hrs for trials (Oct 2025 repl.)

AUXILIARY MACHINERY & ELECTRICAL SYSTEM

Electric Power	400 V/220 V & 24VDC
Shore Power	x2 109Amps 3 phase Asea shore power converters
Batteries	x12 12V with 1,120Ah

SAFETY & SECURITY EQUIPMENT

Safety	Fire detectors, Smoke alarms, Heat detectors, EPIRB, SART, Life rings, MOB sling, x3 EEBDs
Fire Alarms & Monitoring	AERRPRO Fixed Fire System, FF suits, BA gear, AUTOPRIME Alarm monitoring system, Extinguishers, Hoses
Security	CCTV Cameras

TANK CAPACITIES (approximate)

Fuel Capacity	66,000 L / 17,435 gal
Fuel Consumption	280 L/Hr
Water Capacity	15,000 L / 3,962 gal
Clean Lub Oil	1,200 L / 317 gal
Dirty Lub Oil	1,150 L / 304 gal
Grey Water	4,600 L / 1,215 gal
Black Water	1,900 L / 502 gal

ANCILLARY EQUIPMENT

Steering System	World yacht (OPEM SISTEMI)
Bow Thruster	NAIAD
Stabilisers	NAIAD Zero Speed
Fuel separator	ALFA LAVAL
Air Conditioning	CONDARIA PCWM 15004C03

COMMUNICATION EQUIPMENT

Stacom	SAILOR 6006
VHF	SAILOR 6222 VHF DSC
SSB	SAILOR 6301 MF/HF
GSM	2 x VOIP
FBB	THRANE & THRANE 3672A
Internet	Starlink
TV Antenna	SeaTel
Intercom	JOTRON PHONTECH 3101



YACHT SPECIFICATIONS

NAVIGATION EQUIPMENT

Magnetic Compass	C. PLATH
Gyro Compass	SIMRAD GC 80/GC 85
Automatic Pilot	SIMRAD AP50
Echo Sounder	SIMRAD NSO Evo2
Radar	FURUNO RCU 014 Series Marine Radar
Chart Plotter	TRANSAS – NAVI SAILOR 4000
GPS / Navtex	FURUNO
Wind Instruments	FURUNO RD-33
AIS	FURUNO AIS FA-170

DECK EQUIPMENT

Anchors	Wortelboer
Capstans	Opem Sistemi
Windlasses	Opem Sistemi
Crane & Davits	Motomar
Gangway	Motomar
Jacuzzi	Vanis
Swimming ladder	Sanlorenzo
Swim platform	Sanlorenzo
Awnings	Multiplex
Covers	Modeck

AUDIO/ VISUAL ENTERTAINMENT SYSTEM

Main Salon
Samsung TV
Denon Entertainment System
PlayStation
IP TV

Dining Area
Samsung TV
Denon Entertainment System
IP TV

Aft Deck Seating
4 x SONOS Stereo Speakers

Sundeck
4 x SONOS Stereo Speakers

Guest & Crew Cabins
Samsung TV
Denon Entertainment System
IP TV

DOMESTIC EQUIPMENT

Galley
1 x Liebherr Fridge (Newly installed Nov 2024)
1 x Liebherr Freezer (Newly installed Nov 2024)
2 x Rational iCombi pro-ovens
Large cooking hob
Grill
Extraction hood
Thermomix
Paco jet ice-cream machine
Kitchen Aid
Winterhalter professional dishwasher
Waffle maker
Sink with Greece trap

Laundry
x2 Miele Washing machine
x2 Miele Drying machine



YACHT SPECIFICATIONS

TENDERS & WATER TOYS EQUIPMENT

Tenders

Castoldi Jet JT25 – Yanmar 8LV-370HP (New Nov 2023)

Zodiac 3.9m SOLAS Rescue Tender – 30HP Mercury OB Engine

Toys

Jet Ski – Seadoo RXP-X RS 300HP (2022)

Jet Ski – Seadoo Spark 90 WH 2UP IBR INT (2023)

x2 Flight Boards

x3 Seabobs

x2 Stand-Up Paddleboards (SUPs)

x2 Kayaks

x2 Jobe Wakeboards

x3 Water Skis

x1 Monoski

FunAir Inflatable Slide

Inflatable Jellyfish Pool

Trampoline

Selection of Inflatable Toys

x2 Full Sets of Diving Gear

Snorkeling Equipment (Masks, Fins, Goggles)

OTHER EQUIPMENT

Jacuzzi

Swimming pool

Spa

Massage table

Ice bath

Sauna

Hammam

Gym

Running Machine

Recumbent recline bicycle machine

Selection of weights

Weight bench

Yoga mats

Pilates Ball

Foam rollers

Kettle bells

WORKS LIST / REFITS

2025

Brand new generators installed (0hrs)

New hull part paint

Reconstruction of Watertight doors

All new beach club deck heads

Regular yearly maintenance

2024

Renovation of the aft deck swimming pool

Extensive marble replacement throughout

Extensive upgrade on A/C system

Epoxy coating Zytexx whole yacht

Paint job on bow

New fire dampers in engine room

New cooking island (galley)

New fridges and freezers (galley)

Yearly Maintenance

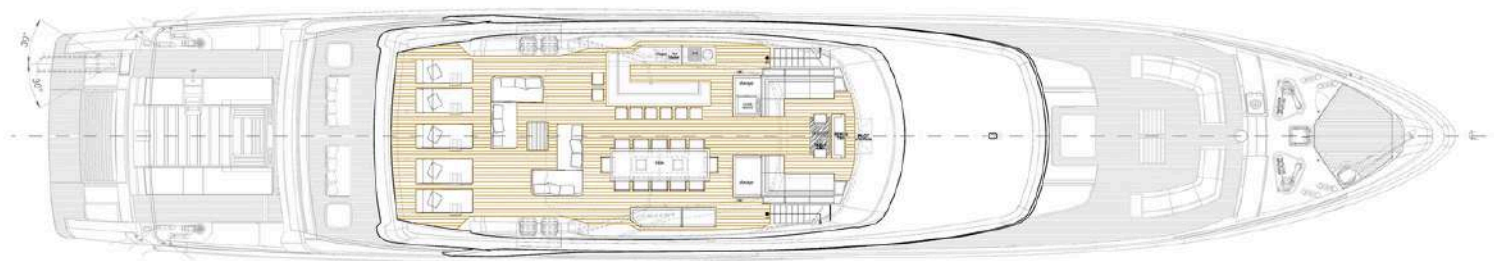
Since build, SEVEN SINS has had 2 shipyard periods each year prior to Mediterranean season and crossing to Caribbean season.



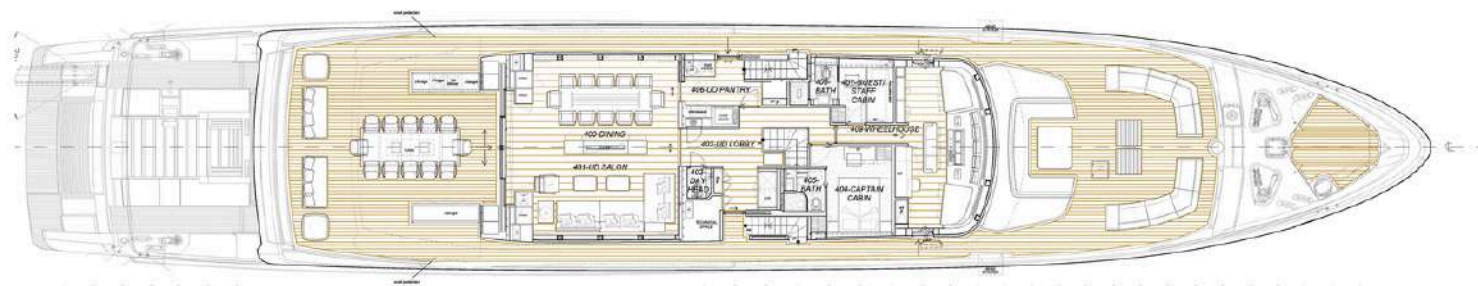
GENERAL ARRANGEMENT



Profile



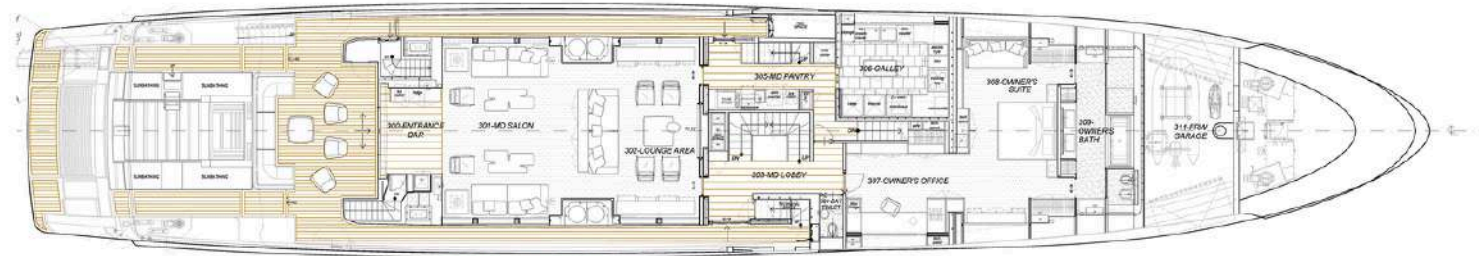
Sun Deck



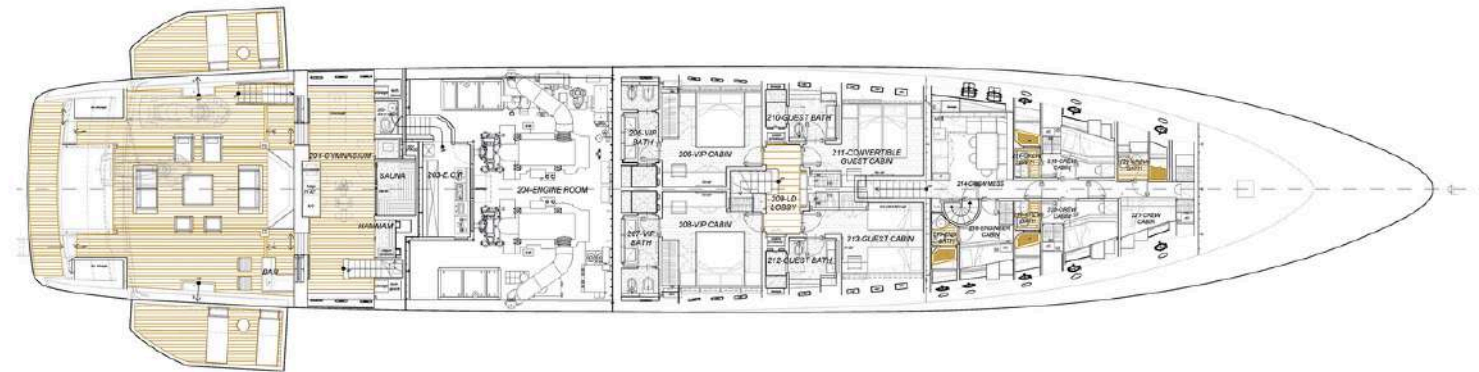
Upper Deck



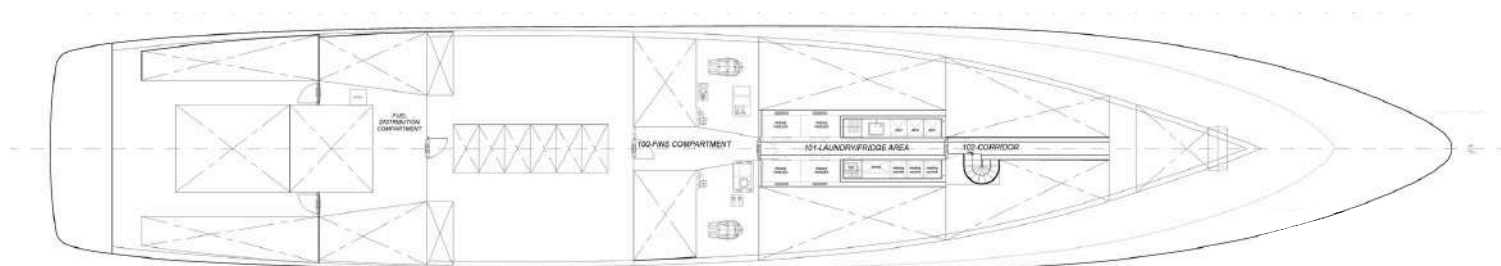
GENERAL ARRANGEMENT



Main Deck



Lower Deck



Under Lower Deck



CONTACT

+377 93 10 29 29
moraviayachting.mc



While every effort has been made to ensure that the information contained in this document is accurate as at the date of production, the accuracy of such information cannot be guaranteed. Moravia Yachting gives no representation, warranty or undertaking, express or implied, as to: the accuracy, reliability, completeness or reasonableness of the information contained in this document; the condition of a featured yacht and/or its equipment; the seaworthiness of a featured yacht; or the suitability and/or availability of a featured yacht for purchase or charter. The fees, specifications, figures, images and comments included in this document are subject to change without notice. This document has been produced by Moravia Yachting at the request of the person identified on the front cover for discussion purposes only and is confidential. This document must not be copied or distributed to any third party, in whole or part, without Moravia Yachting's express written permission. Moravia Yachting hereby expressly excludes any liability howsoever arising in respect of any inaccuracies or errors in the information contained in this document, to the fullest extent permitted by law.

 A Hill Robinson company


Moravia
YACHTING