



KARMA

For Sale

Builder	Picchiotti
Year	1987/2020
LOA	29.7m (97' 5")
Beam	6.95m (22' 8")
Draft	2.95m (8' 8")
GT	161
Cabins	4+1
Guests	12
Speed	15/18 Knots
Price	€1,200,000 VAT Paid







MAIN SALON





MAIN SALON





DINING





DINING





MASTER STATEROOM





MASTER STATEROOM





MASTER STATEROOM





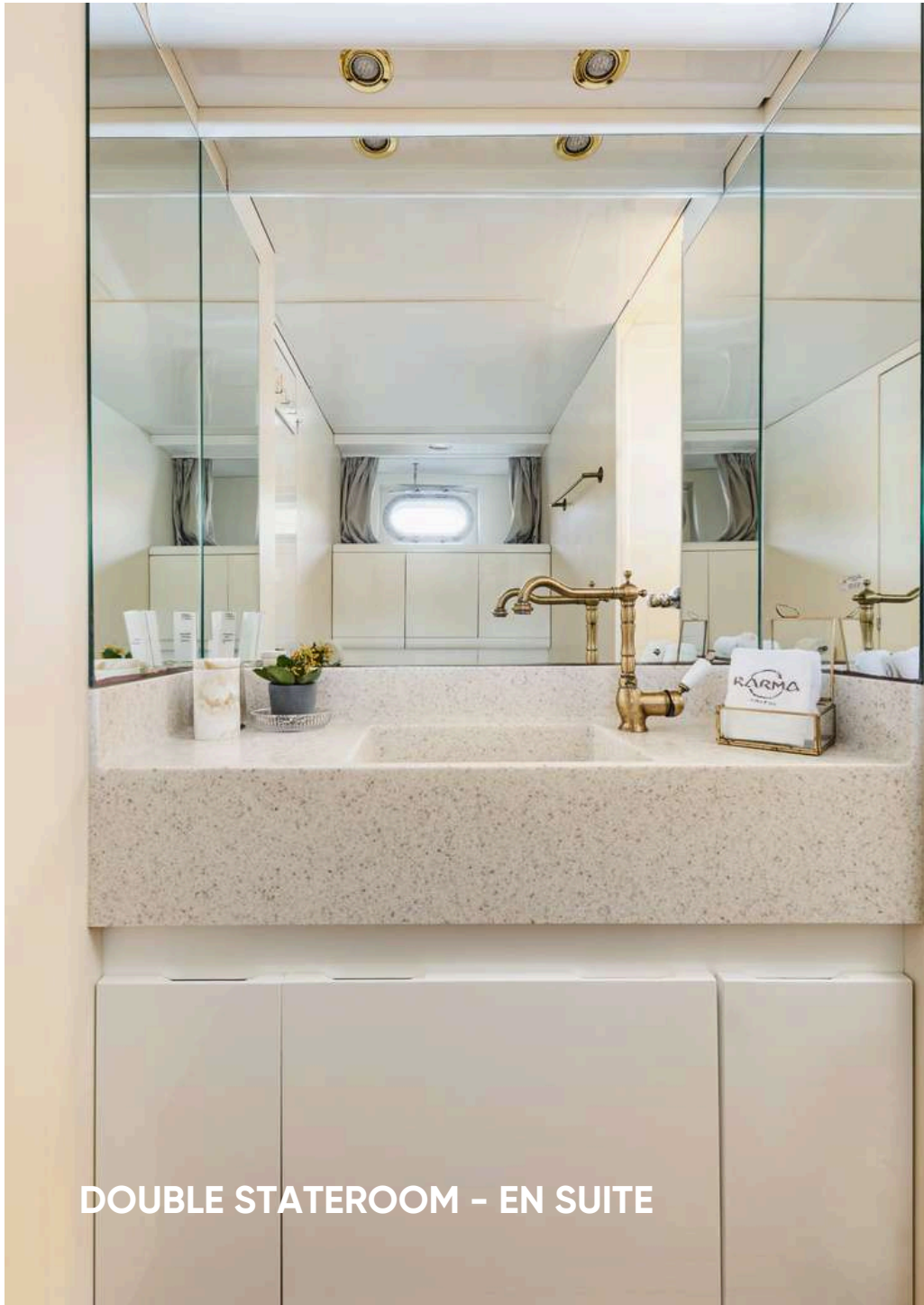
MASTER STATEROOM EN SUITE





DOUBLE STATEROOM





DOUBLE STATEROOM - EN SUITE





TWIN STATEROOM





TWIN STATEROOM





PLAYROOM/FLEXROOM





MAIN DECK





MAIN DECK DINING





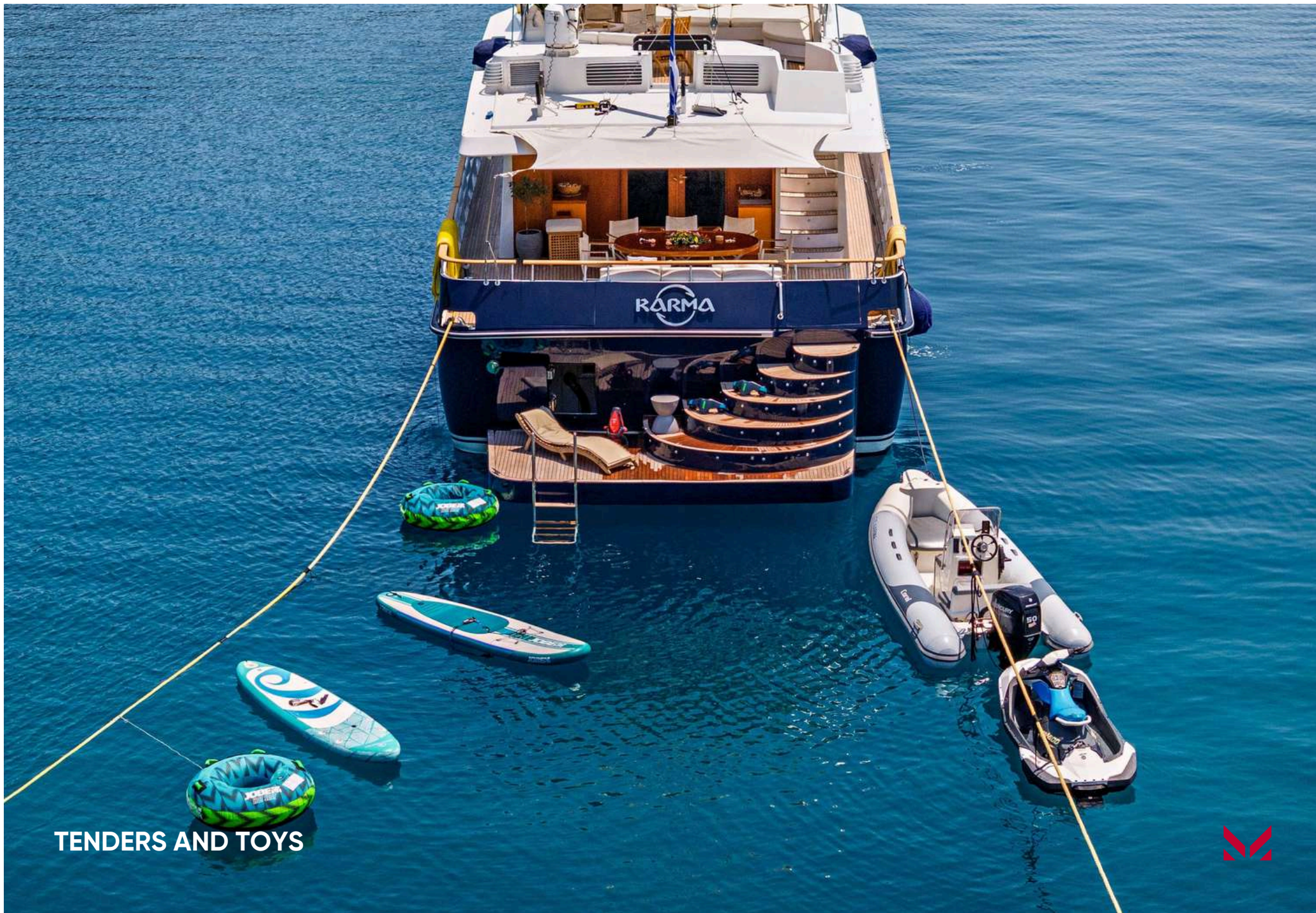
SUN DECK





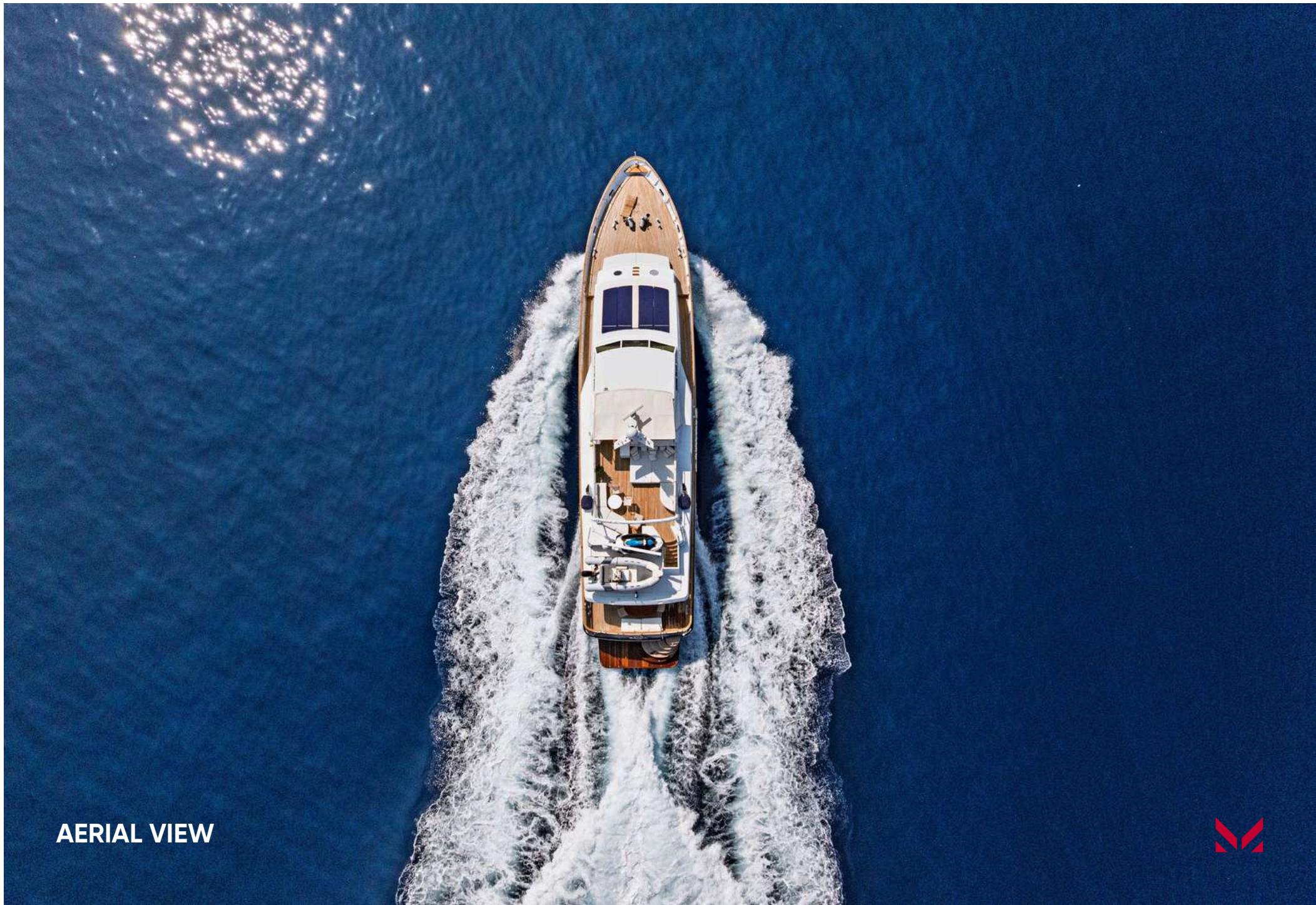
SUN DECK





TENDERS AND TOYS





AERIAL VIEW



YACHT SPECIFICATIONS

MAIN SPECIFICATIONS

Length	29.7m (97' 5")
Beam	6.95m (22' 8")
Draft	2.95m (9' 8")
Gross tonnage	161
Year/Refit	1987/2020
Builder	Picchiotti
Naval Architect	Picchiotti
Interior Design	Picchiotti
Exterior Design	Picchiotti
Hull Construction	Aluminium
Superstructure	Aluminium
Flag	Greece
Port of Registry	Piraeus
Class / MCA	Lloyds Registry

ACCOMMODATION

Guest Cabins	4+1
Guests Berths	12
Arrangement	1x Master stateroom, 1x Double stateroom, 2x Twin staterooms, 1x Flex room
Total Crew	5

TECHNICAL INFORMATION

Main Engines	2x MTU 396, 1,300 hp - 2,600 hp
Engine hours - Port	4,650 (August 2025)
Engine hours - Stb.	4,854 (August 2025)
Maximum speed	18 Knots
Cruising speed	15 Knots
Range	1,125 nm
Generators	1x 40kw Cummins Onan Model MDDCA 138.8 Amps 1x 40kw Kohler Model 40EFOZD 72 Amps
Generator hours - Port	2,291 (August 2025)
Generator hours - Stb.	17,304 (August 2025)
Stabilizers	Naiad Zero Speed - at anchor and underway

AUXILIARY MACHINERY & ELECTRICAL SYSTEM

Electric Power	380V AC, 50Hz, 3-phase; 220V AC, 50Hz; 24V DC
Shore Power	380V AC, 3-phase, 50Hz (60 Amps) 2 sets x 24V DC for main engines; 2 sets x 24V DC for generators; 12 x 12V DC for service; Battery chargers: 2 x CRISTEC CPS 24V (150A) for engines/service + 1 for generators

TANK CAPACITIES (approximate)

Fuel Consumption	400 litres / hr @15 knots
Fuel Capacity	30,000 litres (7,925 gal.)
Water Capacity	4,000 litres (1,056 gal.)
Grey/Black Water	500 litres (132 gal.)

ANCILLARY EQUIPMENT

Steering System	Conventional rudder steering (overhauled 2019); Twin screw propulsion with 4-blade propellers
Bow Thruster	BCS electro/hydraulic, 2 counter-rotating propellers
Stabilisers	Naiad Roll Stabilization, Model 254, at anchor & underway
Air Conditioning	FRIDGIT system (2019 refit)

COMMUNICATION EQUIPMENT

Satcom / Telephone	SAILOR COMPACT 2047
VHF	5 x VHF transceivers



These particulars have been prepared from information provided by the sellers and are intended as a general guide to the vessel. We cannot, however, be liable for any inaccuracy. It is up to the purchaser to confirm details of concern to him by survey, inspection and/or enquiry of the seller and to ensure that the purchase contract properly reflects his concern and specific details upon which he may rely. We always advise an independent survey.

YACHT SPECIFICATIONS

NAVIGATION EQUIPMENT

Magnetic Compass	C-Plath Hamburg
Gyro Compass	Anschütz Kiel
Automatic Pilot	Anschütz Kiel Compilot 9
Echo Sounder	Furuno FCV-61
Radar	Simrad RA 85 + Kodan MD 3604
Chart Plotter	Raymarine C120
GPS / Navtex	GPS integrated with Raymarine C120
Wind Instruments	Simrad

DECK EQUIPMENT

Anchors	2× 120 kg anchors + chains (2 × 5 shackles)
Capstans	2× electric stainless steel capstans
Windlasses	2× electronic anchor windlasses
Crane & Davits	2× deck head-mounted gantry boat cranes
Gangway	Automatic passerelle (2019 refit)
Sun awnings	Bimini top
Covers	Winter covers

DOMESTIC EQUIPMENT

1× Miele oven
5× refrigerators (Priolinox Italy)
2× freezers (galley) Priolinox Italy
1× freezer 220V Pitsos
1x dishwasher E-40 ECO PB Silanos (new)
2 × icemakers U-Line
1x washing machine Whirlpool (new)
1x dryer Grundig (new)

AUDIO VISUAL EQUIPMENT

Satellite TV in each cabin

DECK FACILITIES

Swimming platform with shower

TOYS

1x New Mercury 50 hp (4 Stroke) outboard
Towable tub
Waterskis
Seascooter
Paddleboard
Wakeboard
Fishing Gear

TENDER

1x New VIPBOAT 430 RIB Tender – 4.6m



CONTACT

+377 93 10 29 29
moraviayachting.mc

While every effort has been made to ensure that the information contained in this document is accurate as of the date of production, the accuracy of such information cannot be guaranteed. Moravia Yachting gives no representation, warranty or undertaking, express or implied, as to: the accuracy, reliability, completeness or reasonableness of the information contained in this document; the condition of a featured yacht and/or its equipment; the seaworthiness of a featured yacht; or the suitability and/or availability of a featured yacht for purchase or charter. The fees, specifications, figures, images and comments included in this document are subject to change without notice. This document has been produced by Moravia Yachting at the request of the person identified on the front cover for discussion purposes only and is confidential. This document must not be copied or distributed to any third party, in whole or part, without Moravia Yachting's express written permission. Moravia Yachting hereby expressly excludes any liability howsoever arising in respect of any inaccuracies or errors in the information contained in this document, to the fullest extent permitted by law.

 A Hill Robinson company


Moravia
YACHTING