



WABASH

Builder	Benetti SpA
Year/Refit	2018/2026
LOA	40.2m (132')
Beam	8.2m (26' 10")
Draft	2.3m (7' 65")
Cabins	6
Guests	12 +2
Cruising Speed	11 knots
Maximum Speed	13 knots
Price	\$16,450,000 (Ex. VAT)*

*Not available to US residents while in US water unless in FTZ or under a US Boat Show Bond.


Moravia
YACHTING



MAIN SALON





MAIN SALON



MAIN SALON





MAIN SALON DINING





MAIN SALON DINING





SKYLounge





SKYLOUNGE





SKYLOUNGE





BRIDGE DECK AFT





BRIDGE DECK AFT





BRIDGE DECK AFT





MAIN DECK AFT



MAIN DECK AFT





MAIN DECK AFT





FOYER





FOYER



MASTER STATEROOM





MASTER STATEROOM





MASTER EN SUITE





MASTER STATEROOM OFFICE





VIP STATEROOM





VIP EN SUITE BATHROOM





DOUBLE CABIN





EN SUITE BATHROOM





DOUBLE CABIN





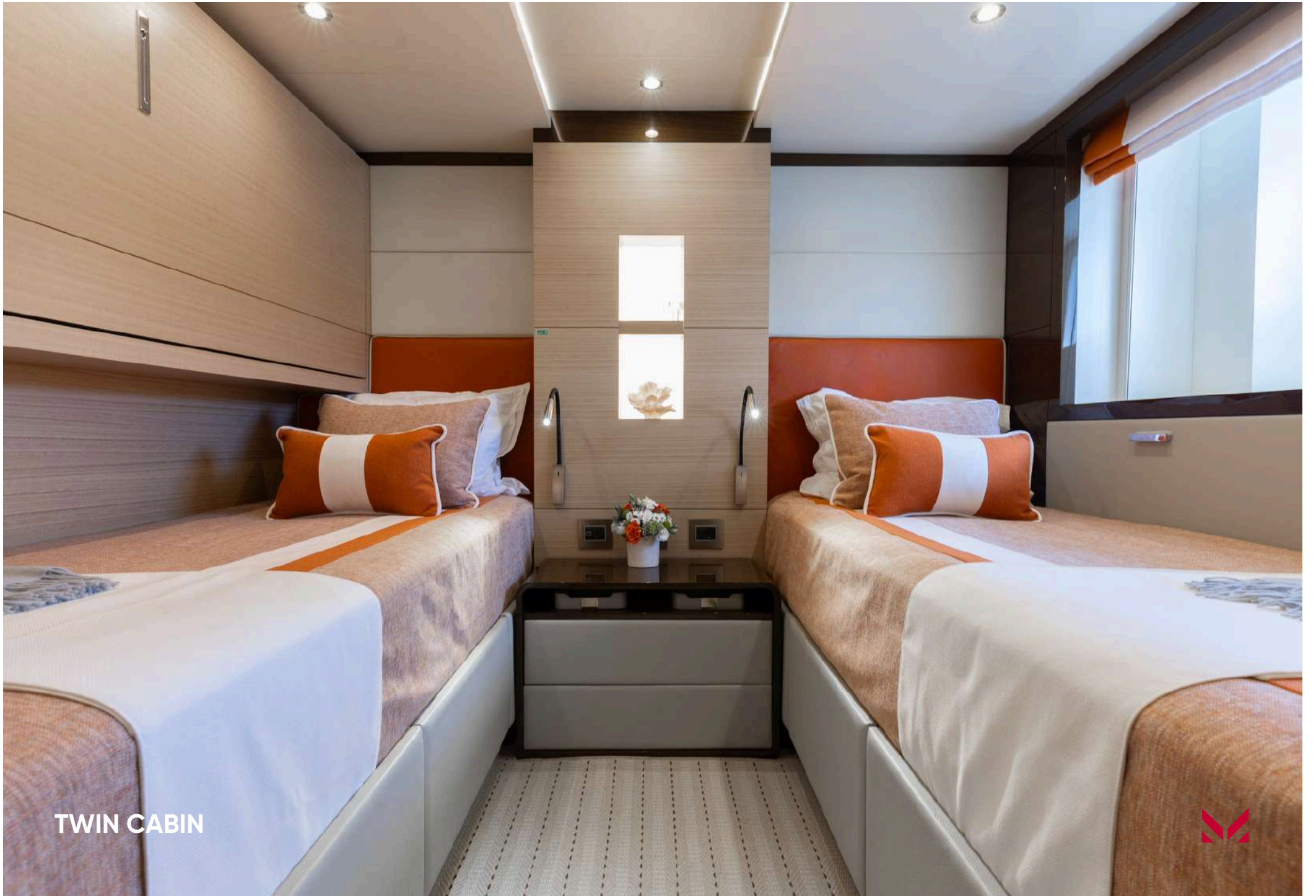
EN SUITE BATHROOM





TWIN CABIN





TWIN CABIN





EN SUITE BATHROOM





FOREDECK SUN PADS





JACUZZI





FOREDECK JACUZZI





SUNDECK DINING





SUNDECK AFT





SUNDECK FORWARD





BRIDGE





GALLEY





CREW MESS





ENGINE ROOM





SWIM PLATFORM







YACHT SPECIFICATIONS

MAIN SPECIFICATIONS

Length	40.2m (132')
Beam	8.2m (26' 10")
Draft	2.3m (7' 65")
Gross Tonnage	346
Year/Refit	2018/2026
Builder	Benetti SpA
Naval Architect	Benetti SpA
Interior Designer	Stefano Righini / Kimberly Pucci
Exterior Designer	Stefano Righini
Hull Construction	GRP
Superstructure	GRP
Classification	RINA
Flag	Marshall Islands

ACCOMMODATION

Guest Cabins	6
Guest Berths	12 + 2
Arrangement	1x Master cabin, 1x VIP cabin 2x Double cabins + 2x Twin cabins with 1 Pullman each
Crew Cabins	5 incl. the captain's cabin
Crew Berths	up to 8

MACHINERY

Main Engine	2x MTU 12V 2000 M72, 2900 hp
Manufacturer	MTU
Engine hours - Port	4,389 hrs (Feb 2026)
Engine hours - Stb.	4,160 hrs (Feb 2026)
Gearboxes	ZF 3351
Maximum speed	13 knots
Cruising speed	11 knots
Range	3,400 nm

AUXILIARY MACHINERY & ELECTRICAL SYSTEM

Main Generator	2x Kohler 78kw
Generator hours - Port	13,501 hrs (Feb 2026)
Generator hours - Stb.	13,245 hrs (Feb 2026)
Emergency Generator	None
Electric Power	220v
Shore Power	2x A-SEA 54VHES shore power converters

TANK CAPACITIES (approximate)

Fuel Capacity	44,997 L (11,887 US Gal.)
Fuel Consumption	180 L/Hr (cruising)
Water Capacity	7,600 L
Clean Lub Oil	2x 440 L
Dirty Lub Oil	260 L
Grey/Black Water	4,200 L

ANCILLARY EQUIPMENT

Steering System	BCS ITISTIMI56
Bow Thruster	CMC Marine
Stern Thruster	None
Stabilisers	CMC Marine SE120-70-4-200 series
Fuel separator	None
Bilge/Fire Pump	Gianesschi
Boilers	Gianesschi
Air Conditioning	3 x Bitzer 4HE-15-2NU chillers, Frigomar fan coil units
Cooling water system	Idromar dual pass UV sterilizer
Fresh water pump	2x carbon filter 240-400V pumps
Water maker	Idromar reverse osmosis Watermaker System (150 USG/hr)
Water filter	Idromar

COMMUNICATION EQUIPMENT

Satcom	Starlink
VHF	Sailor 6222 VHF Sailor 6210 VHF Sailor 6301 MF/HF Radio
UHF Communications	ICOM Digital Crew radios



YACHT SPECIFICATIONS

NAVIGATION EQUIPMENT

Magnetic Compass	Northrop Grumman Sperry Marine Type 2843
Gyro Compass	Sperry Marine Navigat X MK 2
Automatic Pilot	Navis AP3000
Radar	X-band Furuno
Chart Plotter	TIMEZERO with Navionics & C-MAP charts
GPS / Navtex	2x Furuno GP170 GPS; Furuno NY700 Navtex
Wind Instruments	Wind controls
AIS	Furuno FA170

SAFETY & SECURITY EQUIPMENT

Safety

Life rafts: (4) SOLAS-Zodiac 10 person, Life Rings, EPIRB, Buoy with light throw.

Fire

Engine fire suppression system FM 200, Portable fire extinguishers, Fire main with hose and nozzle, Fire pump (rebuilt 06/2023), Emergency fire and bilge pump (rebuilt 06/2023).

Alarms & Monitoring

Cantalupi System - 3x 14" screens

Medical

Mediare Category A medical Kit

AUDIO/ VISUAL ENTERTAINMENT SYSTEM

- Starlink Internet System (installed 2022)
- BEST by Benetti system (accessible on iPad)
- Apple TV
- Satellite system
- Sound system
- Lighting system
- Pre-loaded iPod
- Salon iPod

DOMESTIC EQUIPMENT

Sun deck: Hoshizaki IM30CPE Ice machine

Bridge Deck: Hoshizaki IM30CPE Ice machine in Sky Lounge bar. Miele Dishwasher

Main Deck Saloon Bar: Hoshizaki IM30CPE Ice machine

Garage: SCOTT Ice Machine

Galley:

Dumbwaiter to main deck, upper deck, sun deck

4x Custom-made built-in wall freezers

4x Custom-made built-in wall refrigerators

Undercounter refrigerator

Miele wide oven 90cm - H2890B

Range: 5 burner induction range with SS fiddles

2x Mini fridges

2x Miele Professional clothes washer

2x Miele Professional clothes dryers

TENDERS & WATER TOYS EQUIPMENT

- 2x WaveRunner
- 2x Seabob
- Jetsurf
- 3x e-foil boards
- 2x stand-up paddleboards
- Waterslide
- Towables
- Snorkeling gear
- Beach setup
- Top-of-the-line fishing gear, spearfishing gear, lobster equipment
- Scuba gear and dive compressor
- 2x drones

WORK LIST

- Starboard engine was rebuilt and both engines have full warranty until 2029.
- Full HVAC refit was undertaken. Original equipment but all overhauled.
- Interior refit (\$1.5M): Full Main Salon, Bridge Deck Bar, Full Master Stateroom. Refreshed beds and flooring in all lower deck cabins. New hardwood flooring throughout the boat. New appliances throughout Main Salon Bar and Bridge Deck Salon.

EXCLUSION LIST

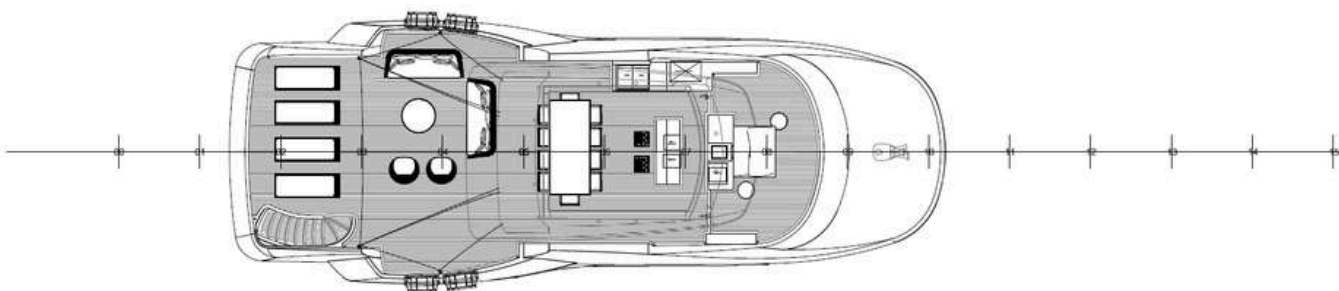
Available upon request.



GENERAL ARRANGEMENT



Profile



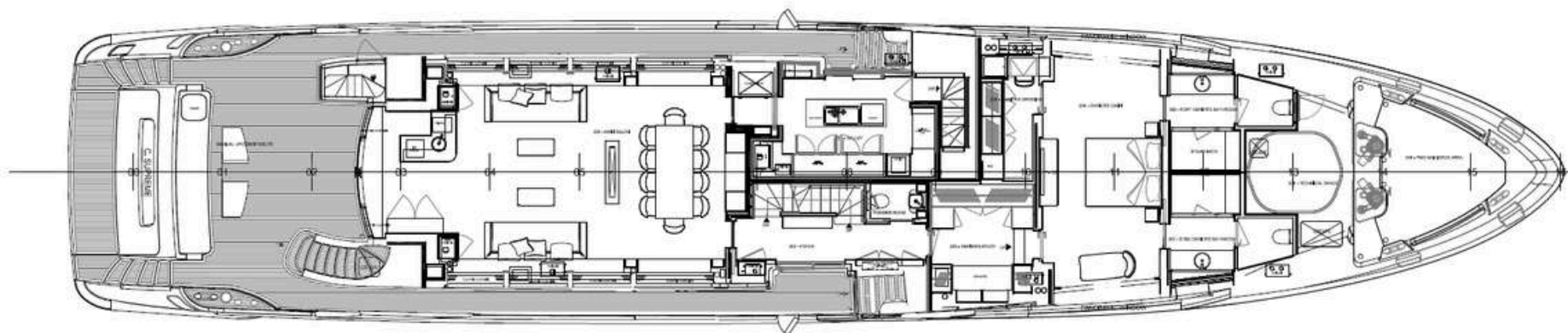
Sun Deck



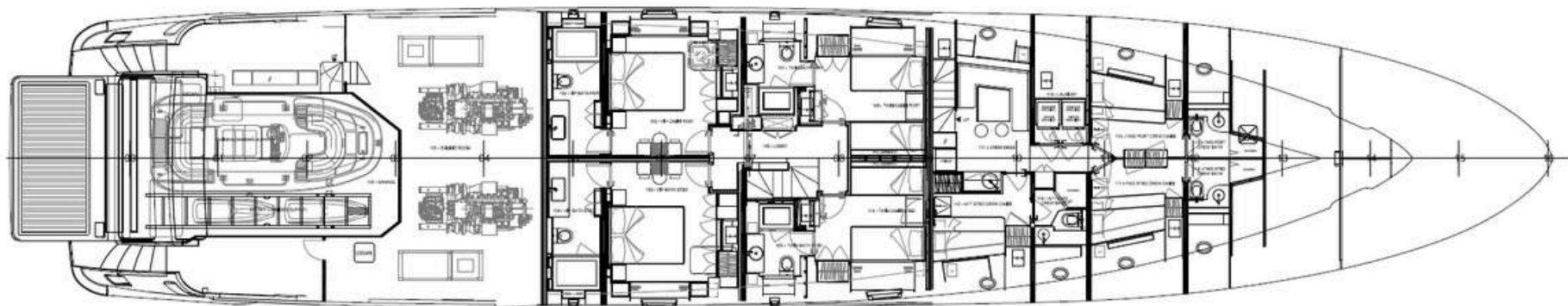
Upper Deck



GENERAL ARRANGEMENT



Main Deck



Lower Deck



CONTACT

Alastair Callender
Charter and Sales Broker

+1 954 261 3559

alastair.callender@moraviayachting.com

moraviayachting.com



While every effort has been made to ensure that the information contained in this document is accurate as at the date of production, the accuracy of such information cannot be guaranteed. Moravia Yachting gives no representation, warranty or undertaking, express or implied, as to: the accuracy, reliability, completeness or reasonableness of the information contained in this document; the condition of a featured yacht and/or its equipment; the seaworthiness of a featured yacht; or the suitability and/or availability of a featured yacht for purchase or charter. The fees, specifications, figures, images and comments included in this document are subject to change without notice. This document has been produced by Moravia Yachting at the request of the person identified on the front cover for discussion purposes only and is confidential. This document must not be copied or distributed to any third party, in whole or part, without Moravia Yachting's express written permission. Moravia Yachting hereby expressly excludes any liability howsoever arising in respect of any inaccuracies or errors in the information contained in this document, to the fullest extent permitted by law.

 A Hill Robinson company


Moravia
YACHTING