

# AD ASTRA 60

Builder	S&Y – AD ASTRA
Year/Refit	New-build available for 2026/2027
LOA	17.86m
Beam	4.75m
Draft	1.21m
Cabins	3
Guests	6
Max Speed	32 Knots
Price	€2,230,000 Excl. VAT



**Moravia**  
YACHTING





MAIN DECK DINING





MAIN DECK DINING





MAIN DECK OUTDOOR DINING





MAIN DECK AFT SUNBED



MASTER CABIN





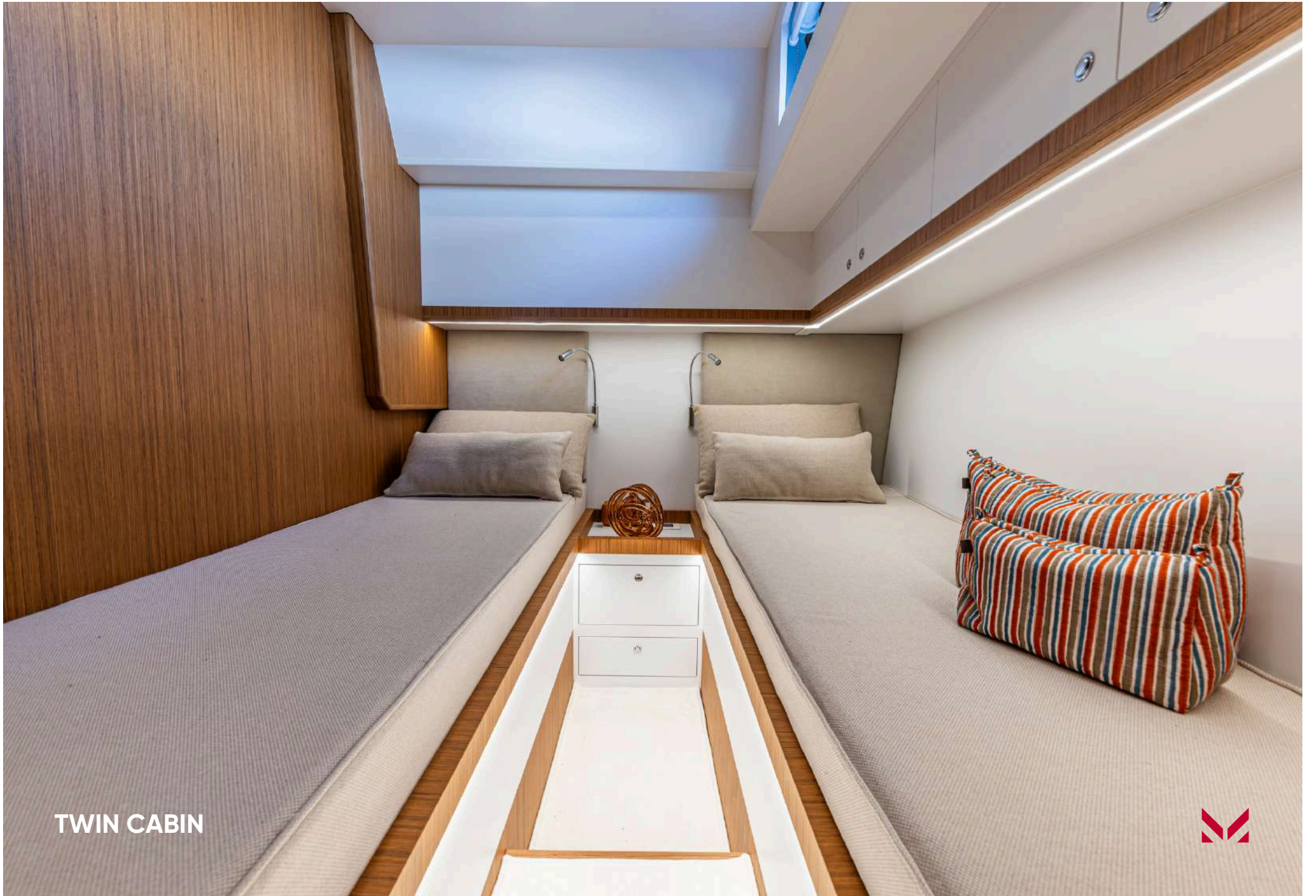
MASTER CABIN





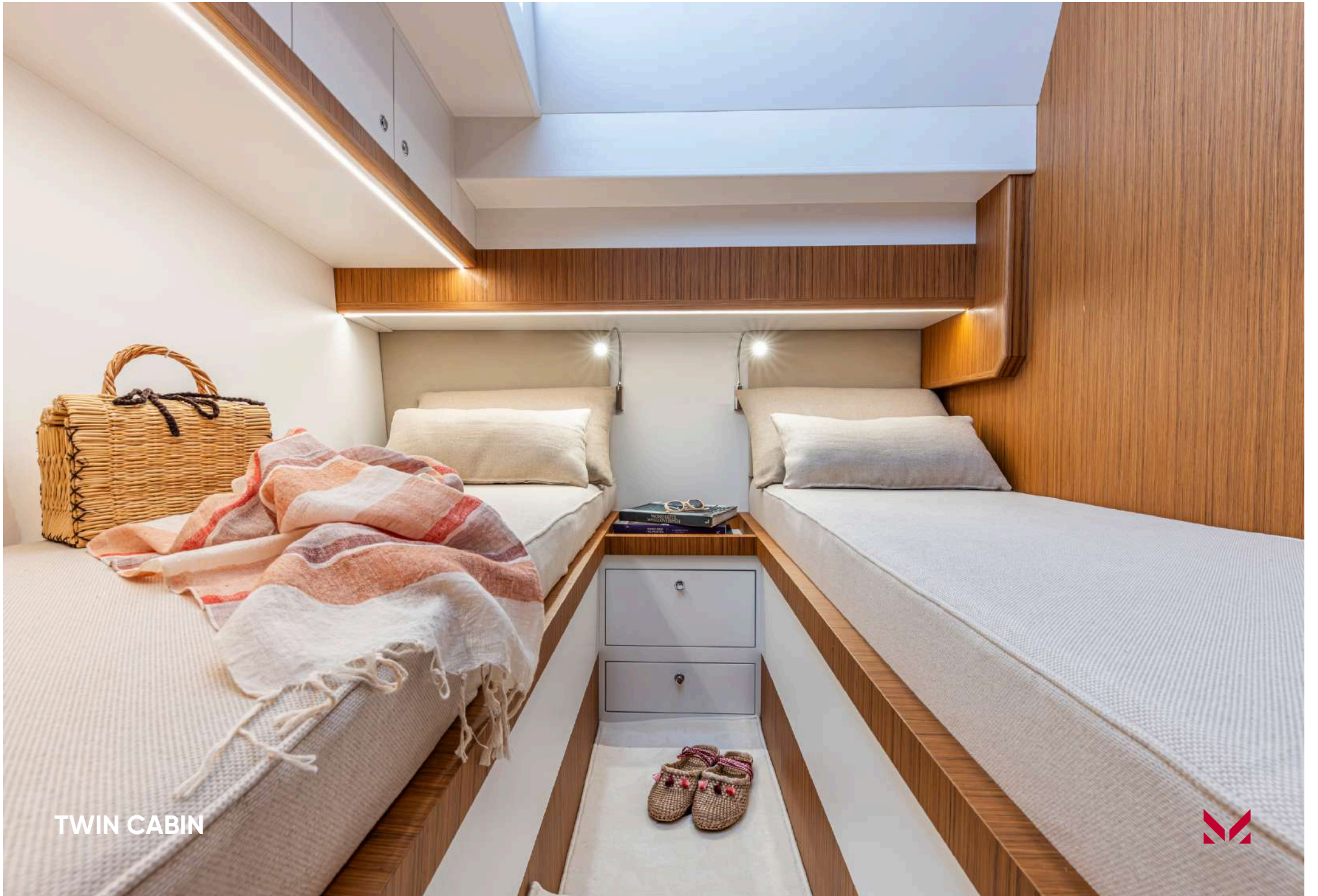
**MASTER ENSUITE BATHROOM**





TWIN CABIN





TWIN CABIN





CREW CABIN





**STEERING STATION**





**STEERING STATION**





BOW SUNBED





GARAGE







# YACHT SPECIFICATIONS

## DIMENSIONS

<b>Length</b>	17.86m
<b>Beam</b>	4.75m
<b>Draft</b>	1.21m
<b>Year Built</b>	New build for 2026/2027
<b>Builder</b>	S&Y - AD ASTRA
<b>Naval Architect</b>	S&Y-AD ASTRA / Francesco Guida
<b>Interior Designer</b>	S&Y-AD ASTRA / Francesco Guida
<b>Exterior Designer</b>	S&Y-AD ASTRA / Francesco Guida
<b>Hull Construction</b>	GRP
<b>Superstructure</b>	GRP
<b>Classification</b>	Rina B Module

## ANCILLARY EQUIPMENT

- Steering System
- Bow Thruster 220 KGF
- Stabilisers optional GYRO OR FINS
- Bilge/Fire Pump as per flag requirements
- Boilers 80 LT
- Air Conditioning 48.000 BTU/H

## AUXILIARY MACHINERY & ELECTRICAL SYSTEM

<b>Main Generator</b>	16 KW-50HZ optional
<b>Electrical</b>	Electrical system with operating voltages 24 V / 220 V
<b>Shore Power</b>	63 A shore power
<b>Batteries</b>	Service batteries: n. 4 225 Ah / 12 V Engine batteries: n. 2 225 Ah / 12 V Generator battery: n. 190 Ah / 12 V

## TANK CAPACITIES (approximate)

<b>Fuel Capacity in liters</b>	2900 LT
<b>Fuel Consumption</b>	@ max speed 158 l/h per engine @ cruising speed 120 l/h per engine
<b>Water Capacity</b>	1.000 L
<b>Grey Water</b>	420 L
<b>Black Water</b>	230 L

## SAFETY & SECURITY EQUIPMENT

- Safety as per flag (within 50nm off the coast)
- Medical as per flag
- Fire as per flag
- Alarms & Monitoring
- Security

## MACHINERY

<b>Main Engine</b>	2x MAN I6-800 HP - 800 mhp 588 kW @2300
<b>Gearboxes</b>	ZF 325-I A - r=1,733:1
<b>Shafts</b>	AISI630 D=70 mm
<b>Propellers</b>	NiBrAl - 4 blades - D=720 mm
<b>Maximum speed</b>	32 Knots
<b>Cruising speed</b>	25 Knots
<b>Maximum range</b>	280 nm
<b>Cruising range</b>	300 nm



These particulars have been prepared from information provided by the sellers and are intended as a general guide to the vessel. We cannot, however, be liable for any inaccuracy. It is up to the purchaser to confirm details of concern to him by survey, inspection and/or enquiry of the seller and to ensure that the purchase contract properly reflects his concern and specific details upon which he may rely. We always advise an independent survey.

# YACHT SPECIFICATIONS

## ACCOMODATION

---

<b>Cabins</b>	3 + Crew cabin
<b>Guests</b>	6

## DECK EQUIPMENT

---

- n. 2 stern capstan winches of 700 W each
- 1700 W windlass with meter counter in helm station
- 30 kg "Trefoil" steel anchor
- 12 mm galvanized chain, 100 m long
- Tenderlift system with electro-hydraulic movement Winch for launching/hauling tender
- Tender garage hatch with electro-hydraulic movement
- Retractable electro-hydraulic gangway with teak grating

## NAVIGATION EQUIPMENT

---

- Magnetic Compass
- Automatic Pilot n.1 autopilot control unit (with integrated rudder angle indicator function)
- Log
- Echo Sounder
- Radar (optional)
- Chart Plotter n.1 x 16 multifunction display with combined GPS and Radar function
- VHF

## LAYOUT

---

- Main Salon
- Bridge Deck
- Sun Deck
- Owners Cabin with ensuite bathroom
- 2x Guest Cabin
- Crew Cabin
- Galley
- Cockpit

## DOMESTIC EQUIPMENT

---

- Main Galley Kitchen equipped with sink, hot/cold water mixer, fridge, and induction hob

## TENDERS & WATER TOYS EQUIPMENT

---

- Tenders Garage for Optional Tender 2.85m length



## GENERAL ARRANGEMENT - STANDARD LAYOUT



**Profile**



**Main Deck**



**Lower Deck**



## GENERAL ARRANGEMENT - OPTIONAL LAYOUT / COMFORT



**Profile**



**Main Deck**



**Lower Deck**



## CONTACT

Alessandro Diomedi  
Sales Broker

+377 6 43 91 90 54

[alessandro.diomedi@moraviayachting.mc](mailto:alessandro.diomedi@moraviayachting.mc)

[moraviayachting.mc](http://moraviayachting.mc)

While every effort has been made to ensure that the information contained in this document is accurate as at the date of production, the accuracy of such information cannot be guaranteed. Moravia Yachting gives no representation, warranty or undertaking, express or implied, as to the accuracy, reliability, completeness or reasonableness of the information contained in this document, the condition of a featured yacht and/or its equipment; the seaworthiness of a featured yacht; or the suitability and/or availability of a featured yacht for purchase or charter. The fees, specifications, figures, images and comments included in this document are subject to change without notice. This document has been produced by Moravia Yachting at the request of the person identified on the front cover for discussion purposes only and is confidential. This document must not be copied or distributed to any third party, in whole or part, without Moravia Yachting's express written permission. Moravia Yachting hereby expressly excludes any liability howsoever arising in respect of any inaccuracies or errors in the information contained in this document, to the fullest extent permitted by law.

 A Hill Robinson company



**Moravia**  
YACHTING