



PROJECT NOON 52

For Sale

Builder	Tureddi Yachts
Year	30 months from signature
LOA	52m
Beam	9.2m
Draft	2.5m
Cabins	5/6
Guests	10/12
Speed	13/15 Knots
Price	€27,500,000



MAIN SALON





MAIN DECK DINING





MAIN DECK DINING





MASTER STATEROOM





MASTER STATEROOM





VIP STATEROOM





VIP STATEROOM





VIP STATEROOM EN SUITE





UPPER FECK AFT DINING





• SUN DECK POOL





AERIAL





AERIAL





BEACH CLUB





GARAGE



YACHT SPECIFICATIONS

MAIN SPECIFICATIONS

Length	52m
LWL	51.3m
Beam	9.2m
Draft	2.5m
Gross Tonnage	499
Year/Refit	30 months from signature
Builder	Tureddi Yachts
Naval Architect	Studio Ruggiero
Interior Designer	Leonardo Cecchi
Exterior Designer	Leonardo Cecchi
Displacement Type	Full displacement
Hull Construction	Steel
Superstructure	Aluminium
Classification	RINA

ACCOMODATION

Guest Cabins	5/6
Guests	10/12
Crew Cabins	6

MACHINERY

Main Engines	2 x MTU 8V 4000 M63
Shafts / Drives	Marinox shaft system
Propellers	Twin bronze 4-blade propellers
Cruising speed	13 knots
Maximum speed	15 knots
Range	4,500 nm @10 knots

AUXILIARY MACHINERY & ELECTRICAL SYSTEM

Main Generators	2 x Kohler 80 kW, 400V - 50Hz
Electric Power	400V AC - 3 phase, 230V AC - single phase, 24 DC emergency and services
Shore Power	125 A shore-inlet
Batteries	Mastervolt service

TANK CAPACITIES (L)

Fuel Capacity	60,000 L
Water Capacity	14,000 L
Grey Water	9,000 L
Black Water	8,000 L

ANCILLARY EQUIPMENT

Steering System	Dual NACA-profile rudders
Bow Thruster	1 x 75 kW electric (400V)
Stabilisers	Zero-Speed fin stabilizers, Gyro optional
Watermaker	IDROMAR or TECNICOMAR
Heating	Heat pump integrated in HVAC system
Air Conditioning	Centralised chilled-water HVAC system with heat pump

COMMUNICATION EQUIPMENT

Satcom	High-speed satellite internet
VHF	Dual VHF DSC
Intercom	Internal intercom system

NAVIGATION EQUIPMENT

Magnetic Compass	Yes
Automatic Pilot	Yes
Echo Sounder	Yes
Radar	FURUNO ARPA + UHD radar
Charter Plotter	Integrated multifunction displays
GPS	FURUNO GP-33
Navtex	Yes



YACHT SPECIFICATIONS

SAFETY & SECURITY EQUIPMENT

Safety

- 2 x ARIMAR Deep Sea 25P life rafts
- EPIRB
- Radar SART
- Safety package > 50nm

Medical

- First aid kit

Fire

- Engine room aerosol suppression system
- Portable extinguishers
- emergency fire pump

Alarms & Monitoring

- Fire detection system,
- high-water alarms, integrated monitoring & camera

Security

- Intrusion alarm system with CCTV monitoring

AUDIO/ VISUAL ENTERTAINMENT SYSTEM

- 75" OLED TV in main salon
- Integrated AV system with full onboard connectivity

DECK EQUIPMENT

Capstans	2 x stern mooring winches
Windlasses	2 x anchor windlasses
Crane & Davits	BESENZONI tender crane (1.7t)
Gangway	Telescopic electro-hydraulic
Awnings	Electrically retractable awnings
Jacuzzi	Yes
Swimming ladder	BESENZONI bathing ladder
Swim platform	Beach platform with shell doors

TENDERS & WATER TOYS EQUIPMENT

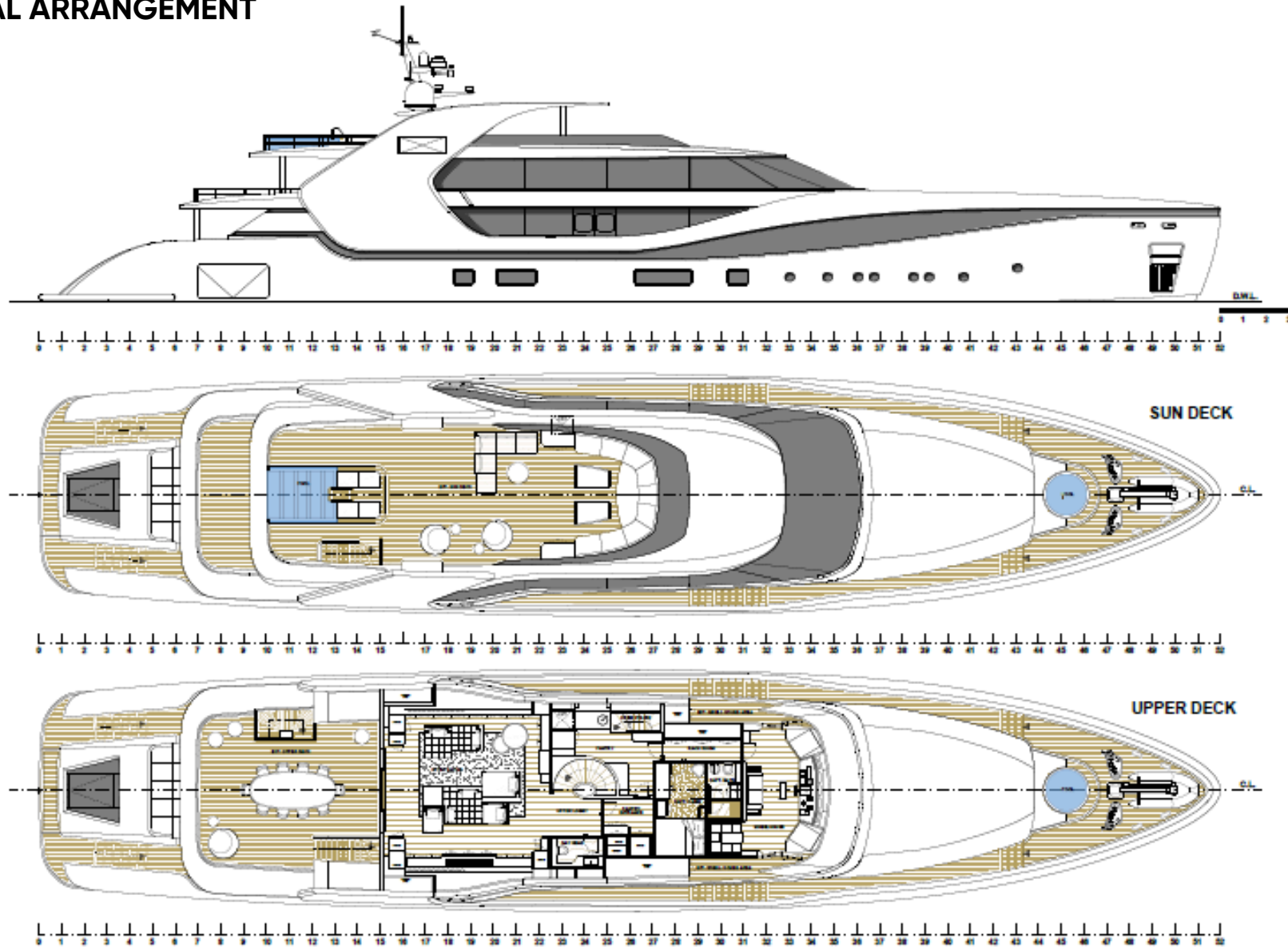
- 1 x 6.5m guest tender
- 1 x 5.0m crew tender
- 2-3 x jet skis

DOMESTIC EQUIPMENT

- Fully equipped galley with induction hob, fridge and sink
- Crew galley and cold room
- Laundry and ironing facilities
- Water heaters (2 x 100L)



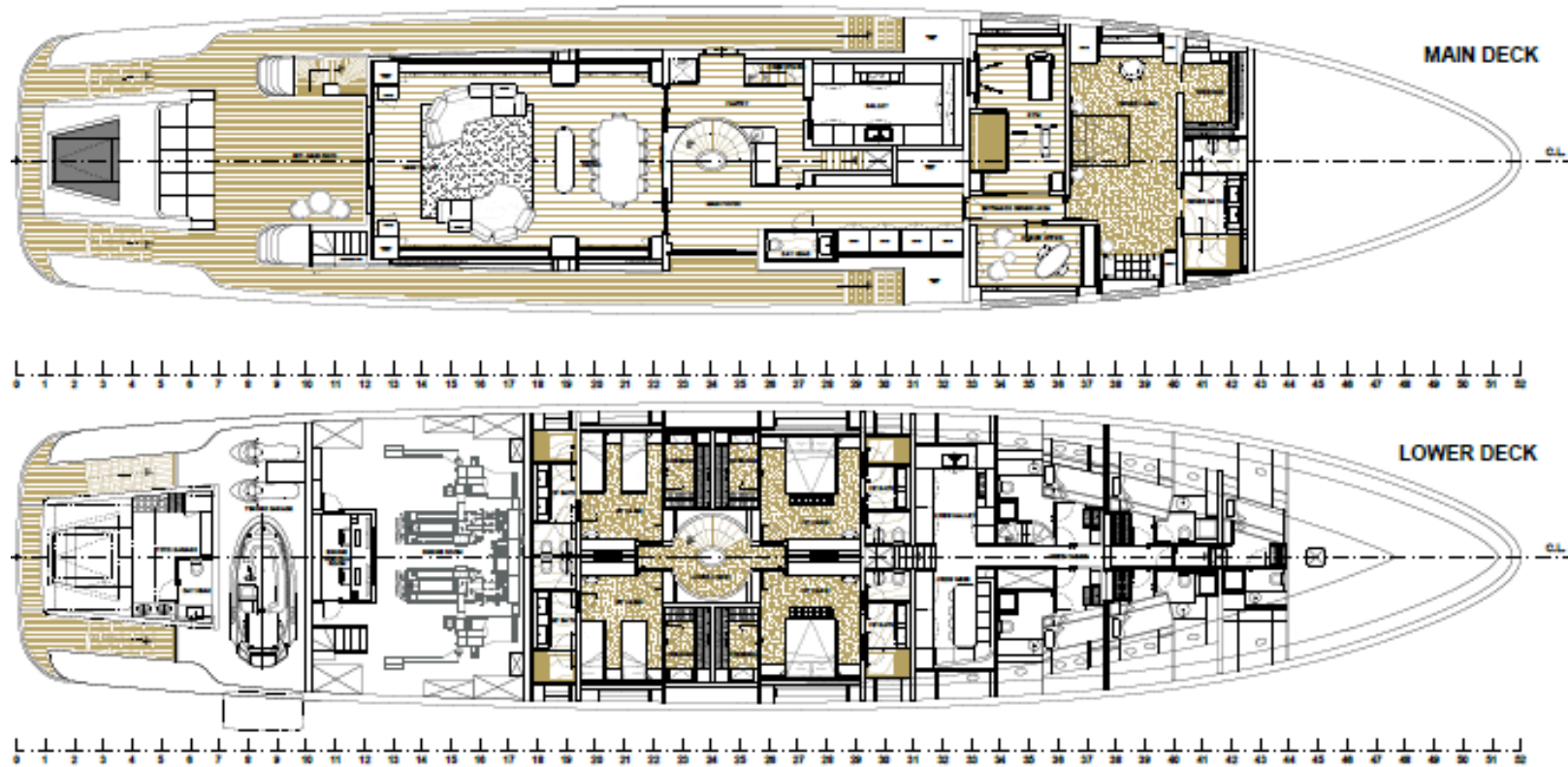
GENERAL ARRANGEMENT



These particulars have been prepared from information provided by the sellers and are intended as a general guide to the vessel. We cannot, however, be liable for any inaccuracy. It is up to the purchaser to confirm details of concern to him by survey, inspection and/or enquiry of the seller and to ensure that the purchase contract properly reflects his concern and specific details upon which he may rely. We always advise an independent survey.



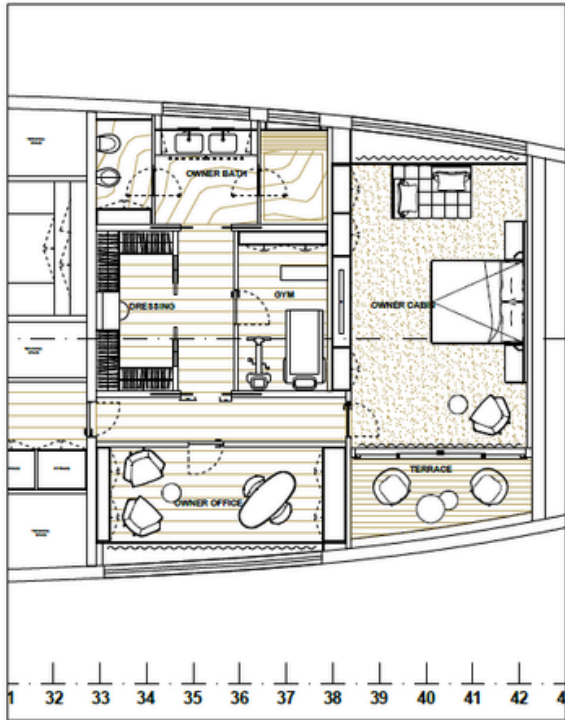
GENERAL ARRANGEMENT



These particulars have been prepared from information provided by the sellers and are intended as a general guide to the vessel. We cannot, however, be liable for any inaccuracy. It is up to the purchaser to confirm details of concern to him by survey, inspection and/or enquiry of the seller and to ensure that the purchase contract properly reflects his concern and specific details upon which he may rely. We always advise an independent survey.



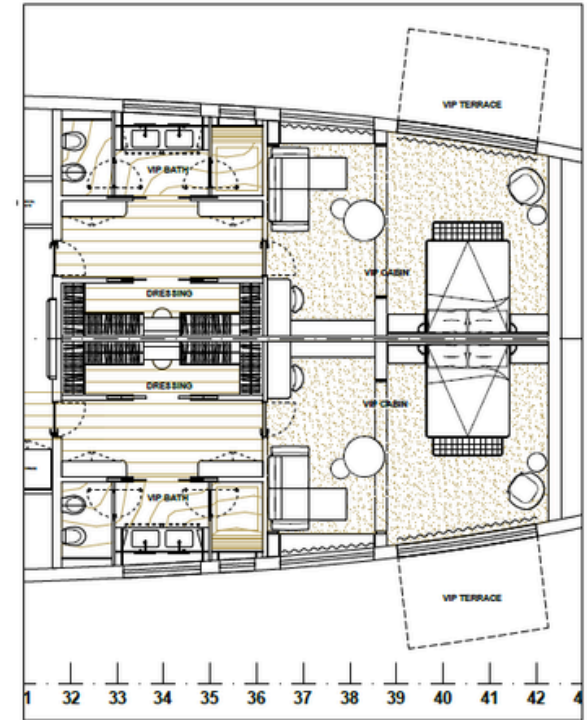
OWNER DECK OPTIONS



OPTION B



OPTION C



OPTION D

These particulars have been prepared from information provided by the sellers and are intended as a general guide to the vessel. We cannot, however, be liable for any inaccuracy. It is up to the purchaser to confirm details of concern to him by survey, inspection and/or enquiry of the seller and to ensure that the purchase contract properly reflects his concern and specific details upon which he may rely. We always advise an independent survey.



CONTACT

Virginia Di Antonio
Sales Broker

+377 37 70 21 10
virginia.diantonio@moraviayachting.mc
moraviayachting.mc



While every effort has been made to ensure that the information contained in this document is accurate as at the date of production, the accuracy of such information cannot be guaranteed. Moravia Yachting gives no representation, warranty or undertaking, express or implied, as to the accuracy, reliability, completeness or reasonableness of the information contained in this document; the condition of a featured yacht and/or its equipment; the seaworthiness of a featured yacht; or the suitability and/or availability of a featured yacht for purchase or charter. The fees, specifications, figures, images and comments included in this document are subject to change without notice. This document has been produced by Moravia Yachting at the request of the person identified on the front cover for discussion purposes only and is confidential. This document must not be copied or distributed to any third party, in whole or part, without Moravia Yachting's express written permission. Moravia Yachting hereby expressly excludes any liability howsoever arising in respect of any inaccuracies or errors in the information contained in this document, to the fullest extent permitted by law.

 A Hill Robinson company


Moravia
YACHTING